

GARDEN REVIVAL  
GARDEN CLASSIC  
BOLLARD  
UP&DOWN  
DOWNLIGHT  
IN-GROUND  
BRICKLIGHT  
FLOODLIGHT  
BULKHEAD  
SOLAR  
URBAN CLASSIC  
URBAN REVIVAL  
URBAN MODERN  
POST  
LAMPS

# PIETRO HIGH POWER LED

GRAND SIZE



Square lantern made in shockproof resin material, UV rays stabilized, rust and corrosion-free. Modular construction suitable for post top, wall and hanging installation. Provided with reflective ceiling designed to host the lighting source and equipped with TÜV-CB certified, long-life and efficient **E27 high power LED lamp included**. Insulation class II, Protection rating IP55.

*Lanterna quadra realizzata in resina antiurto, stabilizzato ai raggi UV, inattaccabile da ruggine e corrosione. Idonea per il montaggio a palo, a sospensione o a parete. Provvista di soffitto riflettente progettato per accogliere la sorgente luminosa e fornita **completa di lampada a LED E27 ad ALTA POTENZA**, certificata TÜV-CB di lunga durata ed elevata efficienza. Classe di isolamento II, grado di protezione IP55.*

E27 HIGH POWER LED

**INDOOR & OUTDOOR USE**

+80°C  
-30°C

90% HUMIDITY

VOLTAGE SURGE RESISTANT

DRIVER SILICONE PROTECTION



U43.000.H1L






**PIETRO HIGH POWER LED - LANTERN COMPONENTS**

IP55



Decorative **PINNACLE** to be mounted on the roof top for post installation or on the lantern base for hanging installation.

**PINNACOLO** decorativo applicabile alla sommità del tetto (montaggio a palo) o sulla base della gabbia (montaggio a sospensione).

Lantern **ROOF** made of shockproof resin material. UV-rays stabilized.

**TETTO** realizzato in resina antiurto, stabilizzata ai raggi UV.

High temperature resistant reflective **CEILING** made of shockproof resin material. Provided with E27 lampholder and equipped with **HIGH POWER LED lamp**. Designed to host and protect the lighting source, granting its safe and quick installation.

**SOFFITTO** riflettente realizzato in resina antiurto ad alta resistenza al calore. Fornito completo di portalamпада E27 e provvisto di lampada a **LED ad ALTA POTENZA**. Progettato per accogliere e proteggere la sorgente luminosa garantendone una veloce e sicura installazione.

**DIFFUSER** of UV-rays stabilized PMMA, with recess for a power supply cable. Provided with silicone rubber gasket to ensure high protection against external agents.

**DIFFUSORE** in PMMA resistente ai raggi UV, provvisto di sede per l'alloggiamento del cavo di alimentazione. Provvisto di guarnizione in gomma siliconica per garantire un alto livello di protezione contro gli agenti esterni.

**CAGE** in one piece only made of shockproof resin material, UV-rays stabilized, rust and corrosion-free.

**GABBIA** realizzata in un unico pezzo e fabbricata in resina antiurto, stabilizzata ai raggi UV, inattaccabile da ruggine e corrosione.

**PIETRO HIGH POWER LED**

U43.000 \*



**Dimensions and weight**

Height: 770 mm  
Width: 430 mm  
Depth: 430 mm  
Weight: 7,5 Kg  
Junction to support: diameter 60 mm  
Area exposed to wind pressure:  
CxS = m<sup>2</sup> 0,182

**Moulded colours:**

Black  White

**Painted colours:**

Antique green  Antique bronze

**Diffuser PMMA:**

Clear  Opal

**HIGH POWER LED**



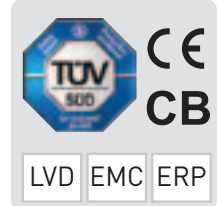
- **COST SAVING:** long-life and efficient LED light source.
- **BUILT-IN DRIVER:** quick and easy lamp replacement.
- **GREAT FLEXIBILITY:** E27 standard lamp holder.
- **FUTURE-PROOFED LUMINARIES:** performances easy to upgrade to latest technology developments.
- **SUITABLE FOR OUTDOOR USE:** built-in driver fully protected against heat and humidity by silicone paste.

Lantern equipped with TÜV-CB certified, long-life, and efficient **E27 high power LED lamp**, granting the same luminous flux of traditional SON/HQI lighting sources. The lamp can be quickly and easily replaced, making the luminaries maintenance very simple.

100 - 240 V

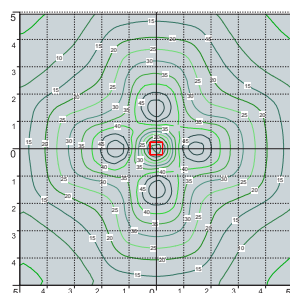
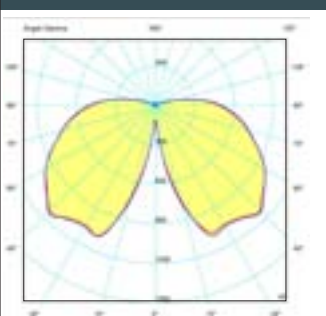
LAMP	POWER	LUMINOUS FLUX UP TO	COLOUR TEMP.	*ADD. SUFFIX
E27 LED	50 W	6550 Lm	4000 K	.H1L
			3000 K	.H1R
E27 LED	60 W	7600 Lm	4000 K	.W1L
			3000 K	.W1R

**LED LAMPS**



Comply with: EU2019/2015  
EU2019/2020  
Technical details on page 636.

**PHOTOMETRIC DATA SAMPLE**



**PIETRO E27 LED HIGH POWER 50W**

POST height 4,5mt  
10x10mt area: average 21 lux

The photometric data for all the versions are available upon request or on our website.

\* ADD THESE SUFFIXES TO THE REFERENCES MENTIONED IN THE CATALOGUE

GARDEN REVIVAL  
GARDEN CLASSIC  
BOLLARD  
UP&DOWN  
DOWNLIGHT  
IN-GROUND  
BRICKLIGHT  
FLOODLIGHT  
BULKHEAD  
SOLAR  
URBAN CLASSIC  
URBAN REVIVAL  
URBAN MODERN  
POST  
LAMPS

# PIETRO E27

GRAND SIZE



E27 square lantern in classic style, made of shockproof resin material, UV-rays stabilized, rust and corrosion-free. Modular construction suitable for post top, hanging and wall installation. Provided with high temperature resistant ceiling suitable for ballast fixation. Insulation class II, protection rating IP 55.

*Lantern quadra E27 in stile classico, realizzata in resina antiurto, stabilizzata ai raggi UV, inattaccabile da ruggine e corrosione. Idonea per il montaggio a palo, a sospensione o a parete. Fornita con soffitto ad alta resistenza al calore idoneo per il fissaggio dei reattori. Classe di isolamento II, grado di protezione IP55.*



U43.000.E27



MADE IN ITALY



**PIETRO E27 - LANTERN COMPONENTS**

IP55



Decorative **PINNACLE** to be mounted on the roof top for post installation or on the lantern base for hanging installation.

**PINNACOLO** decorativo applicabile alla sommità del tetto (montaggio a palo) o sulla base della gabbia (montaggio a sospensione).

**ROOF** made of shockproof resin material, UV-rays stabilized.

**TETTO** realizzato in resina antiurto, stabilizzata ai raggi UV.

High temperature resistant reflective **CEILING** made of shockproof resin material. Provided with E27 lampholder and suitable for ballast fixation.

**SOFFITTO** riflettente realizzato in resina antiurto ad alta resistenza al calore. Fornito completo di portalamпада E27 e idoneo per il fissaggio dei reattori.

**DIFFUSER** of UV-rays stabilized PMMA, with recess for a power supply cable. Provided with silicone rubber gasket to ensure high protection against external agents.

**DIFFUSORE** in PMMA resistente ai raggi UV, provvisto di sede per l'alloggiamento del cavo di alimentazione. Provvisto di guarnizione in gomma siliconica per garantire un alto livello di protezione contro gli agenti esterni.

**CAGE** in one piece only made of shockproof resin material, UV-rays stabilized, rust and corrosion-free.

**GABBIA** realizzata in un unico pezzo e fabbricata in resina antiurto, stabilizzata ai raggi UV, inattaccabile da ruggine e corrosione.

**PIETRO E27**

U43.000 \*



**Dimensions and weight**

Height: 770 mm  
Width: 430 mm  
Depth: 430 mm  
Weight: 7,5 Kg  
Junction to support: diameter 60 mm  
Area exposed to wind pressure:  
CxS = m<sup>2</sup> 0,182

**Moulded colours:**

Black White

**Painted colours:**

Antique green Antique bronze

**Diffuser PMMA:**

Clear Opal

**CHROME ALUMINIUM LOUVER**

H.FC6 open  
Downward position



**E27-E40**

**100 - 240 V**

\*ADD. SUFFIX



suitable lamps:

CFL-LED  
SON-HQI  
max 100W

**E27**  
Lampholder only

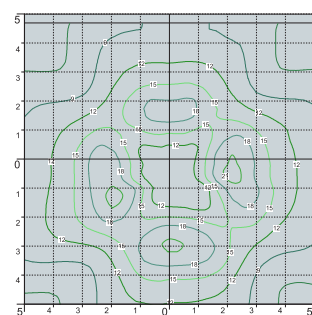
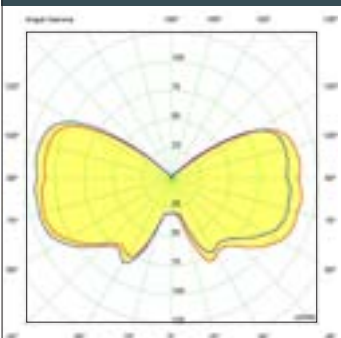
.E27

**E40**  
Lampholder only

.E40

Lantern supplied complete with **E27** or **E40** lampholder.

**PHOTOMETRIC DATA SAMPLE**



**PIETRO E27 clear SON 100W.**

POST height 4,5mt  
10 x 10mt area: average 12 lux

The photometric data for all the versions are available upon request or on our website.

GARDEN REVIVAL  
GARDEN CLASSIC  
BOLLARD  
UP&DOWN  
DOWNLIGHT  
IN-GROUND  
BRICKLIGHT  
FLOODLIGHT  
BULKHEAD  
SOLAR  
URBAN CLASSIC  
URBAN REVIVAL  
URBAN MODERN  
POST  
LAMPS

# PIETRO GX53 LED - FLAT DIFFUSER

GRAND SIZE



Square lantern in classic style, made of shockproof resin material, UV-rays stabilized, rust and corrosion-free. Modular construction suitable for post top, hanging and wall installation. Supplied as standard with **FLAT diffuser** and equipped with TÜV-CB certified, long-life, powerful, efficient and **Kelvin settable GX53 LED modular system**. Designed according to the international regulations against light pollution (standard UNI 10819). Insulation class II, Protection rating IP 55.

*Lanterna quadra in stile classico, realizzata in resina antiurto, stabilizzata ai raggi UV, inattaccabile da ruggine e corrosione. Idonea per il montaggio a palo, a sospensione o a parete. Fornita con **diffusore piatto** ed equipaggiata con **sistema modulare a LED GX53 con Kelvin impostabile** certificato TÜV-CB di lunga durata ed alta efficienza. Progettato in ottemperanza alle norme internazionali contro l'inquinamento luminoso (standard UNI 10819). Classe di isolamento II, grado di protezione IP55.*

U45.000.D8K



**CCT SETTABLE**

3000 K 4000 K 6500 K

SDCM < 6






**PIETRO GX53 LED - LANTERN COMPONENTS**

IP55



Decorative **PINNACLE** to be mounted on the roof top for post installation or on the lantern base for hanging installation.

**PINNACOLO** decorativo applicabile alla sommità del tetto (montaggio a palo) o sulla base della gabbia (montaggio a sospensione).

**LANTERN ROOF** made of shockproof resin material, UV-rays stabilized.

**TETTO** realizzato in resina antiurto, stabilizzata ai raggi UV.

**DIFFUSER** with **FLAT** shape made of UV-rays stabilized polymethylmethacrylate (PMMA), provided with silicone rubber gasket to ensure an increased protection against external agent.

**DIFFUSORE** in polimetilmetacrilato (PMMA) con configurazione piatta, provvisto di guarnizione in gomma siliconica per garantire una migliore protezione contro gli agenti esterni.

**CAGE** in one piece only made of shockproof resin material, UV-rays stabilized, rust and corrosion-free.

**GABBIA** realizzata in un unico pezzo e fabbricata in resina antiurto, stabilizzata ai raggi UV, inattaccabile da ruggine e corrosione.

**PIETRO GX53 LED**

U45.000 \*



**Dimensions and weight**

Height: 770 mm  
Width: 430 mm  
Depth: 430 mm  
Weight: 9,1 Kg  
Junction to support: diameter 60 mm  
Area exposed to wind pressure:  
CxS = m<sup>2</sup> 0,182

**Moulded colours:**

Black  White

**Painted colours:**

Antique green  Antique bronze

**Diffuser PMMA:**

Clear  Opal

**GX53 LED**



- **COST SAVING:** long-life and efficient LED light sources.
- **BUILT-IN DRIVER:** quick and easy lamp replacement.
- **GREAT FLEXIBILITY:** GX53 standard lamp holder.
- **FUTURE-PROOFED LUMINARIES:** performances easy to upgrade to latest technology developments.
- **SUITABLE FOR OUTDOOR USE:** built-in driver fully protected against heat and humidity by silicone paste.

Lantern supplied with white resin **CEILING** provided with 8x TÜV-CB certified, long-life, efficient and **Kelvin settable GX53 LED lamps included**. Each lamp can be quickly and easily replaced individually, making the luminaries maintenance very simple.

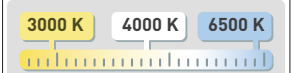
100 - 240 V				
LAMP	POWER	LUMINOUS FLUX (Φ TOTAL) UP TO	COLOUR TEMP.	*ADD. SUFFIX
	8x 10 W <b>80 W</b>	<b>10320 Lm</b>	6500 K 4000 K 3000 K	.D8K

**LED LAMPS**



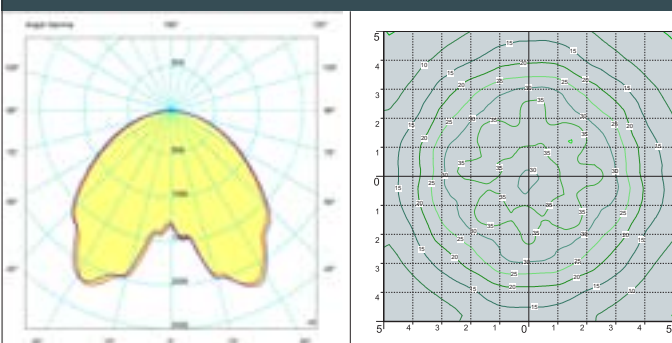
Comply with: EU2019/2015  
EU2019/2020  
Technical details on page 636.

**CCT SETTABLE LED LAMP**



CCT switch settable in three different positions, to select the desired Kelvin temperature (3000K/4000K/6500K) and get a customized ambience.

**PHOTOMETRIC DATA SAMPLE**



**PIETRO GX53 LED**  
8X10W

POST height 4,5mt  
10x10mt area: average 28 lux

The photometric data for all the versions are available upon request or on our website.

\* ADD THESE SUFFIXES TO THE REFERENCES MENTIONED IN THE CATALOGUE

LAMPS POST URBAN MODERN URBAN REVIVAL URBAN CLASSIC SOLAR BULKHEAD FLOODLIGHT BRICKLIGHT IN-GROUND DOWNLIGHT UP&DOWN BOLLARD GARDEN CLASSIC GARDEN REVIVAL

# PIETRO

GRAND SIZE



U43.224 H1L



U45.113.D8K

MADE IN ITALY



GIONA 5000/PIETRO	
U43.227	
<b>GX53</b> U45.227	
Pcs 1 Kg 67,5 mc 1,112	430

GIONA 4000/PIETRO	GIONA 4500/PIETRO
U43.221	U43.224
<b>GX53</b> U45.221	U45.224
Pcs 1 Kg 62,5 mc 0,862	Pcs 1 Kg 65,5 mc 0,982

KARMEL 3500/PIETRO	KARMEL 4000/PIETRO
U43.234	U43.237
<b>GX53</b> U45.234	U45.237
Pcs 1 Kg 38,6 mc 0,402	Pcs 1 Kg 42 mc 0,453

LOT/PIETRO	
U43.113	
<b>GX53</b> U45.113	
Pcs 1 Kg 8,4 mc 0,182	430
	940
	Ø 190

KARMEL 3000/PIETRO	
U43.231	
<b>GX53</b> U45.231	
Pcs 1 Kg 33 mc 0,362	430

PIETRO	
U43.000	
<b>GX53</b> U45.000	
Pcs 1 Kg 7,5 mc 0,182	430
	770
	Ø 60

TABOR/PIETRO	HOREB/PIETRO
U43.204	U43.207
<b>GX53</b> U45.204	U45.207
Pcs 1 Kg 33 mc 0,362	Pcs 1 Kg 35,5 mc 0,402