

GARDEN REVIVAL
GARDEN CLASSIC
BOLLARD
UP&DOWN
DOWNLIGHT
IN-GROUND
BRICKLIGHT
FLOODLIGHT
BULKHEAD
SOLAR
URBAN CLASSIC
URBAN REVIVAL
URBAN MODERN
POST
LAMPS

ELIA HIGH POWER LED

GRAND SIZE



Square lantern made in shockproof resin material, UV rays stabilized, rust and corrosion-free. Modular construction suitable for post top, wall and hanging installation. Provided with reflective ceiling designed to host the lighting source and equipped with TÜV-CB certified, long-life and efficient **E27 high power LED lamp included**. Insulation class II, Protection rating IP55.

*Lanterna quadra realizzata in resina antiurto, stabilizzato ai raggi UV, inattaccabile da ruggine e corrosione. Idonea per il montaggio a palo, a sospensione o a parete. Provvista di soffitto riflettente progettato per accogliere la sorgente luminosa e fornita **completa di lampada a LED E27 ad ALTA POTENZA**, certificata TÜV-CB di lunga durata ed elevata efficienza. Classe di isolamento II, grado di protezione IP55.*

E27 HIGH POWER LED

INDOOR & OUTDOOR USE

+80°C
-30°

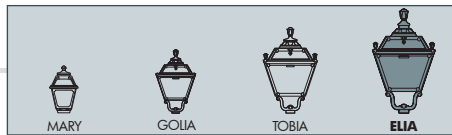
90% HUMIDITY

VOLTAGE SURGE RESISTANT

DRIVER SILICONE PROTECTION

Q43.000.W1R





ELIA HIGH POWER LED - LANTERN COMPONENTS

IP55



Decorative **PINNACLE** to be mounted on the roof top for post installation or on the lantern base for hanging installation.

***PINNACOLO** decorativo applicabile alla sommità del tetto (montaggio a palo) o sulla base della gabbia (montaggio a sospensione).*

Lantern **ROOF** made of shockproof resin material, UV-rays stabilized.

***TETTO** realizzato in resina antiurto, stabilizzata ai raggi UV.*

High temperature resistant reflective **CEILING** made of shockproof resin material. Provided with E27 lampholder and equipped with **HIGH POWER LED lamp**. Designed to host and protect the lighting source, granting its safe and quick installation.

***SOFFITTO** riflettente realizzato in resina antiurto ad alta resistenza al calore. Fornito completo di portalamada E27 e provvisto di lampada a **LED ad ALTA POTENZA**. Progettato per accogliere e proteggere la sorgente luminosa garantendone una veloce e sicura installazione.*

DIFFUSER of UV-rays stabilized PMMA, with recess for a power supply cable. Provided with silicone rubber gasket to ensure high protection against external agents.

***DIFFUSORE** in PMMA resistente ai raggi UV, provvisto di sede per l'alloggiamento del cavo di alimentazione. Provvisto di guarnizione in gomma siliconica per garantire un alto livello di protezione contro gli agenti esterni.*

CAGE in one piece only made of shockproof resin material, UV-rays stabilized, rust and corrosion-free.

***GABBIA** realizzata in un unico pezzo e fabbricata in resina antiurto, stabilizzata ai raggi UV, inattaccabile da ruggine e corrosione.*

ELIA HIGH POWER LED

Q43.000 *



Dimensions and weight

Height: 740 mm
Width: 430 mm
Depth: 430 mm
Weight: 7,5 Kg
Junction to support: diameter 60 mm
Area exposed to wind pressure:
CxS = m² 0,165

Moulded colours:

Black White

Painted colours:

Antique green Antique bronze

Diffuser PMMA:

Clear Opal

HIGH POWER LED



- **COST SAVING:** long-life and efficient LED light source.
- **BUILT-IN DRIVER:** quick and easy lamp replacement.
- **GREAT FLEXIBILITY:** E27 standard lamp holder.
- **FUTURE-PROOFED LUMINARIES:** performances easy to upgrade to latest technology developments.
- **SUITABLE FOR OUTDOOR USE:** built-in driver fully protected against heat and humidity by silicone paste.

Lantern equipped with TÜV-CB certified, long-life, and efficient **E27 high power LED lamp**, granting the same luminous flux of traditional SON/HQI lighting sources. The lamp can be quickly and easily replaced, making the luminaries maintenance very simple.

100 - 240 V

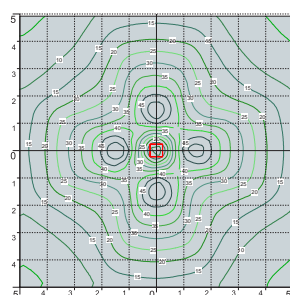
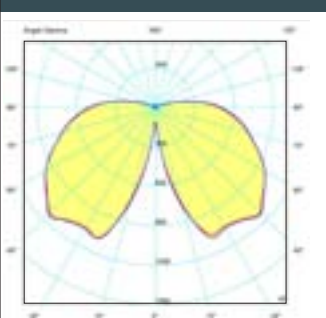
LAMP	POWER	LUMINOUS FLUX UP TO	COLOUR TEMP.	*ADD. SUFFIX
E27 LED	50 W	6550 Lm	4000 K	.H1L
			3000 K	.H1R
E27 LED	60 W	7600 Lm	4000 K	.W1L
			3000 K	.W1R

LED LAMPS



Comply with: EU2019/2015
EU2019/2020
Technical details on page 636.

PHOTOMETRIC DATA SAMPLE



ELIA E27 LED HIGH POWER 50W

POST height 4,5mt
10x10mt area: average 21 lux

The photometric data for all the versions are available upon request or on our website.

* ADD THESE SUFFIXES TO THE REFERENCES MENTIONED IN THE CATALOGUE

GARDEN REVIVAL
GARDEN CLASSIC
BOLLARD
UP&DOWN
DOWNLIGHT
IN-GROUND
BRICKLIGHT
FLOODLIGHT
BULKHEAD
SOLAR
URBAN CLASSIC
URBAN REVIVAL
URBAN MODERN
POST
LAMPS

ELIA E27

GRAND SIZE



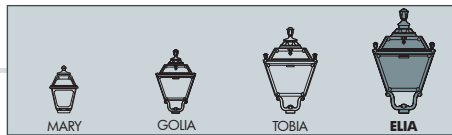
E27 square lantern in classic style, made of shockproof resin material, UV-rays stabilized, rust and corrosion-free. Modular construction suitable for post top, hanging and wall installation. Provided with high temperature resistant ceiling suitable for ballast fixation. Insulation class II, protection rating IP 55.

Lantern quadra E27 in stile classico, realizzata in resina antiurto, stabilizzata ai raggi UV, inattaccabile da ruggine e corrosione. Idonea per il montaggio a palo, a sospensione o a parete. Fornita con soffitto ad alta resistenza al calore idoneo per il fissaggio dei reattori. Classe di isolamento II, grado di protezione IP55.



Q43.000.E27





ELIA E27 - LANTERN COMPONENTS

IP55



Decorative **PINNACLE** to be mounted on the roof top for post installation or on the lantern base for hanging installation.

PINNACOLO decorativo applicabile alla sommità del tetto (montaggio a palo) o sulla base della gabbia (montaggio a sospensione).

ROOF made of shockproof resin material, UV-rays stabilized. Tool-free opening for relamping and access to control-gear.

TETTO realizzato in resina antiurto, stabilizzata ai raggi UV. Rimovibile senza l'ausilio di attrezzi per manutenzione e cambio lampadina.

High temperature resistant reflective **CEILING** made of shockproof resin material. Provided with E27 lampholder and suitable for ballast fixation.

SOFFITTO riflettente realizzato in resina antiurto ad alta resistenza al calore. Fornito completo di portalamпада E27 e idoneo per il fissaggio dei reattori.

DIFFUSER of UV-rays stabilized PMMA, with recess for a power supply cable. Provided with silicone rubber gasket to ensure high protection against external agents.

DIFFUSORE in PMMA resistente ai raggi UV, provvisto di sede per l'alloggiamento del cavo di alimentazione. Provvisto di guarnizione in gomma siliconica per garantire un alto livello di protezione contro gli agenti esterni.

CAGE in one piece only made of shockproof resin material, UV-rays stabilized, rust and corrosion-free.

GABBIA realizzata in un unico pezzo e fabbricata in resina antiurto, stabilizzata ai raggi UV, inattaccabile da ruggine e corrosione.

ELIA E27

Q43.000 *



Dimensions and weight

Height: 740 mm
Width: 430 mm
Depth: 430 mm
Weight: 7,5 Kg
Junction to support: diameter 60 mm
Area exposed to wind pressure:
CxS = m² 0,165

Moulded colours:

Black White

Painted colours:

Antique green Antique bronze

Diffuser PMMA:

Clear Opal

CHROME ALUMINIUM LOUVER

H.FC6 open
Downward position



E27-E40 VERSION

100 - 240 V

*ADD. SUFFIX



suitable lamps:

CFL-LED
SON-HQI

max 100W

E27
Lampholder only

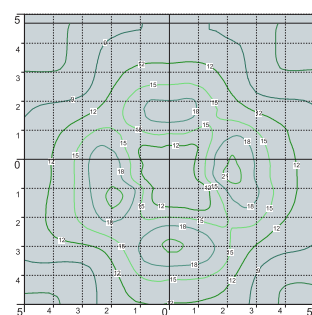
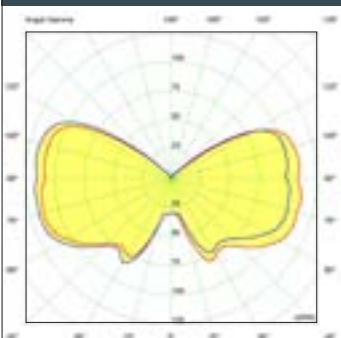
.E27

E40
Lampholder only

.E40

Lantern supplied complete with **E27** or **E40** lampholder.

PHOTOMETRIC DATA SAMPLE



ELIA E27 clear SON 100W.

POST height 4,5mt
10 x 10mt area: average 12 lux

The photometric data for all the versions are available upon request or on our website.

* ADD THESE SUFFIXES TO THE REFERENCES MENTIONED IN THE CATALOGUE

GARDEN REVIVAL
GARDEN CLASSIC
BOLLARD
UP&DOWN
DOWNLIGHT
IN-GROUND
BRICKLIGHT
FLOODLIGHT
BULKHEAD
SOLAR
URBAN CLASSIC
URBAN REVIVAL
URBAN MODERN
POST
LAMPS

ELIA GX53 LED - FLAT DIFFUSER

GRAND SIZE



Square lantern in classic style, made of shockproof resin material, UV-rays stabilized, rust and corrosion-free. Modular construction suitable for post top, hanging and wall installation. Supplied as standard with **FLAT diffuser** and equipped with TÜV-CB certified, long-life, powerful, efficient and **kelvin settable GX53 LED modular system**. Designed according to the international regulations against light pollution (standard UNI 10819). Insulation class II, Protection rating IP 55.

Lanterna quadra in stile classico, realizzata in resina antiurto, stabilizzata ai raggi UV, inattaccabile da ruggine e corrosione. Idonea per il montaggio a palo, a sospensione o a parete. Fornita con diffusore piatto ed equipaggiata con sistema modulare a LED GX53 con kelvin impostabile certificato TÜV-CB di lunga durata ed alta efficienza. Progettato in ottemperanza alle norme internazionali contro l'inquinamento luminoso (standard UNI 10819). Classe di isolamento II, grado di protezione IP55.

Q45.000.D8K

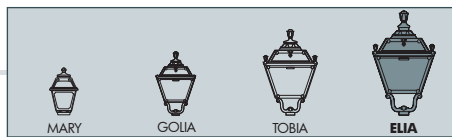


CCT SETTABLE

3000 K 4000 K 6500 K

SDCM < 6





ELIA GX53 LED - LANTERN COMPONENTS

IP55



Decorative **PINNACLE** to be mounted on the roof top for post installation or on the lantern base for hanging installation.

PINNACOLO decorativo applicabile alla sommità del tetto (montaggio a palo) o sulla base della gabbia (montaggio a sospensione).

LANTERN ROOF made of shockproof resin material, UV-rays stabilized. Tool-free opening for relamping and maintenance.

TETTO realizzato in resina antiurto, stabilizzata ai raggi UV. Rimovibile senza l'ausilio di attrezzi per manutenzione e cambio lampadina.

DIFFUSER with **FLAT** shape made of UV-rays stabilized polymethylmethacrylate (PMMA), provided with silicone rubber gasket to ensure an increased protection against external agent.

DIFFUSORE in polimetilmetacrilato (PMMA) con configurazione piatta, provvisto di guarnizione in gomma siliconica per garantire una migliore protezione contro gli agenti esterni.

CAGE in one piece only made of shockproof resin material, UV-rays stabilized, rust and corrosion-free.

GABBIA realizzata in un unico pezzo e fabbricata in resina antiurto, stabilizzata ai raggi UV, inattaccabile da ruggine e corrosione.

ELIA GX53 LED

Q45.000 *



Dimensions and weight

Height: 740 mm
Width: 430 mm
Depth: 430 mm
Weight: 9,1 Kg

Area exposed to wind pressure:
CxS = m² 0,165

Moulded colours:

Black White

Painted colours:

Antique green Antique bronze

Diffuser PMMA:

Clear Opal


GX53 LED



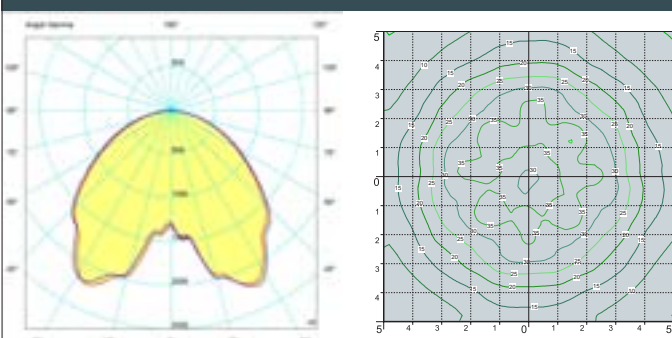
- **COST SAVING:** long-life and efficient LED light sources.
- **BUILT-IN DRIVER:** quick and easy lamp replacement.
- **GREAT FLEXIBILITY:** GX53 standard lamp holder.
- **FUTURE-PROOFED LUMINARIES:** performances easy to upgrade to latest technology developments.
- **SUITABLE FOR OUTDOOR USE:** built-in driver fully protected against heat and humidity by silicone paste.

Lantern supplied with white resin **CEILING** provided with 8x TÜV-CB certified, long-life, efficient and **Kelvin settable GX53 LED lamps included**. Each lamp can be quickly and easily replaced individually, making the luminaries maintenance very simple.

100 - 240 V

LAMP	POWER	LUMINOUS FLUX (Φ TOTAL) UP TO	COLOUR TEMP.	*ADD. SUFFIX
	8x 10 W 80 W	10320 lm	6500 K 4000 K 3000 K	.D8K

PHOTOMETRIC DATA SAMPLE



ELIA GX53 LED
8X10W

POST height 4,5mt
10x10mt area: average 28 lux

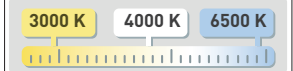
The photometric data for all the versions are available upon request or on our website.

LED LAMPS



Comply with: EU2019/2015
EU2019/2020
Technical details on page 636.

CCT SETTABLE LED LAMP



CCT switch settable in three different positions, to select the desired Kelvin temperature (3000K/4000K/6500K) and get a customized ambiance.

LAMPS
POST
URBAN MODERN
URBAN REVIVAL
URBAN CLASSIC
SOLAR
BULKHEAD
FLOODLIGHT
BRICKLIGHT
IN-GROUND
DOWNLIGHT
UP&DOWN
BOLLARD
GARDEN CLASSIC
GARDEN REVIVAL

GIONA 4500-5000/ELIA

GRAND SIZE



Q43.224.N10.W1L

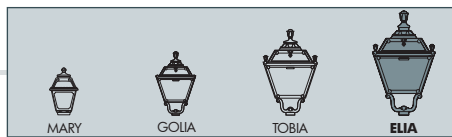


Q43.172.W1L



Q43.224.N20.W1L





GIONA 4500 ARON/ELIA 1L	GIONA 5000 ARON/ELIA 1L
Q43.224.N10	Q43.227.N10
GX53 Q45.224.N10	GX53 Q45.227.N10
Pcs 1 Kg 71,5 mc 0,949	Pcs 1 Kg 73,5 mc 1,191

ARON/ELIA	
Q43.172	Q45.172
GX53	GX53
Pcs 1 Kg 13 mc 0,223	

GIONA 4500 ARON/ELIA 2L	GIONA 5000 ARON/ELIA 2L
Q43.224.N20	Q43.227.N20
GX53 Q45.224.N20	GX53 Q45.227.N20
Pcs 1 Kg 82,5 mc 1,196	Pcs 1 Kg 84,5 mc 1,329

GIONA 4500 ARON/ELIA 4L	GIONA 5000 ARON/ELIA 4L
Q43.224.N40	Q43.227.N40
GX53 Q45.224.N40	GX53 Q45.227.N40
Pcs 1 Kg 105 mc 1,444	Pcs 1 Kg 107 mc 1,605

ERMON.R/ELIA resin
Q43.195
GX53 Q45.195
Pcs 1 Kg 13,5 mc 0,250