

# MARY

SMALL SIZE



E27 square lantern in classic style, made of shockproof resin material, UV-rays stabilized, rust and corrosion-free. Modular construction suitable for post top, hanging and wall installation. Supplied as optional with TÜV-CB certified, long-life and efficient **LED lamps** suitable for outdoor use. Insulation class II, protection rating IP55.

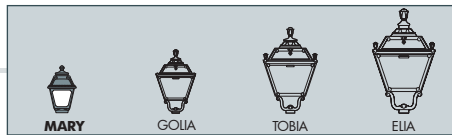
*Lanterna quadra E27 in stile classico, realizzata in resina antiurto, stabilizzata ai raggi UV, inattaccabile da ruggine e corrosione. Idonea per il montaggio a palo, a sospensione o a parete. Fornita anche completa di lampadine LED adatte ad uso in ambiente esterno, certificate TÜV-CB, di lunga durata ed elevata efficienza. Classe di isolamento II, grado di protezione IP55.*

6,5W 800 lm	8,5W 920 lm	11W 1200 lm	
2700 K	2700 K	4000 K	6500 K
+80°C -30°C	90% HUMIDITY	VOLTAGE SURGE RESISTANT	
<b>INDOOR &amp; OUTDOOR USE</b>			



Q18.110.F1R



**MARY - LANTERN COMPONENTS**

**IP55**



Decorative **PINNACLE** to be mounted on the roof top for post installation or on the lantern base for hanging installation.

**PINNACOLO** decorativo applicabile alla sommità del tetto (montaggio a palo) o sulla base della gabbia (montaggio a sospensione).

Lantern **ROOF** made of shockproof resin material, UV rays stabilized and supplied with E27 lampholder. Tool-free opening for relamping and maintenance.

**TETTO** realizzato in resina antiurto, stabilizzata ai raggi UV, fornito completo di portalamпада E27. Rimovibile senza l'ausilio di attrezzi per manutenzione e cambio lampadina.

**DIFFUSER** made of UV stabilized polymethylmethacrylate (PMMA) resistant to yellowing process due to sun rays, available in clear or opal color and provided with recess for power cable supply. Made of one piece only and closed at the bottom to ensure high protection against external agents (IP 55).

**DIFFUSORE** in polimetilmetacrilato (PMMA) resistente al processo di ingiallimento dovuto ai raggi solari, disponibile in colore trasparente od opale e provvisto di scanalatura per il passaggio del cavo di alimentazione. Realizzato in un pezzo unico e con fondo chiuso per garantire un alto livello di protezione contro gli agenti esterni (IP 55).

**CAGE** made of shockproof resin material, UV-rays stabilized, rust and corrosion-free.

**GABBIA** realizzata in resina antiurto, stabilizzata ai raggi UV, inattaccabile da ruggine e corrosione.



**MARY**

Q18.000 \*



180



290

Ø 60

**Dimensions and weight**

Height: 290 mm  
Width: 180 mm  
Depth: 180 mm  
Weight: 1 Kg

**Moulded colours:**

Black  White

**Painted colours:**

Antique green  Antique bronze

**Diffuser PMMA:**

Clear  Opal

**E27 FILAMENT**



**E27 CCT SET(\*)**





**100 - 240 V**



\*ADD. SUFFIX

suitable lamps:  
CFL-LED  
max 150 mm

**E27**  
lampholder only

.E27

LAMP	POWER	LUMINOUS FLUX UP TO	COLOUR TEMP.	
 FILAMENT LED E27	6,5W	800 lm	2700 K	.F1R
 CCT SET LED E27	8,5 W	920 lm	6500 K 4000 K 2700 K	.V1K

 6,5W filament = **60W** incandescent  
 8,5W CCT

**SAVE up to 89%**

- Perfect **MATCHING WITH DECORATIVE LANTERNS.**
- **SUITABLE FOR OUTDOOR USE:** 100-240V driver.
- **360°OMNIDIRECTIONAL LIGHT.**
- **HIGH EFFICIENCY:** 90% ENERGY SAVING.

- **A60 CCT SETTABLE:** 2700K/4000K/6500K.
- **SUITABLE FOR OUTDOOR USE:** 100-240V driver.
- **EYE COMFORT** opal glass.
- **HIGH EFFICIENCY:** >85% ENERGY SAVING.

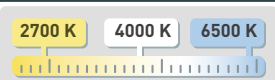
**LED LAMPS**



LVD EMC ERP

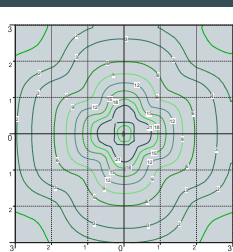
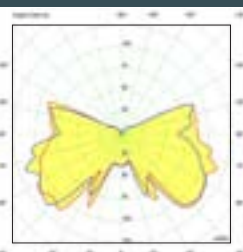
Comply with: EU2019/2015  
EU2019/2020  
Technical details on page 636.

**CCT SETTABLE LED LAMP(\*)**



CCT switch settable in three different positions, to select the desired Kelvin temperature (2700K/4000K/6500K) and get a customized ambience.

**PHOTOMETRIC DATA SAMPLE**



**MARY** lantern clear with Fumagalli Filament Led Lamp 6,5W.

POST height 1mt  
6x6mt area: average 6 lux

The photometric data for all the versions are available upon request or on our website.

\* ADD THESE SUFFIXES TO THE REFERENCES MENTIONED IN THE CATALOGUE

# MARY

SMALL SIZE



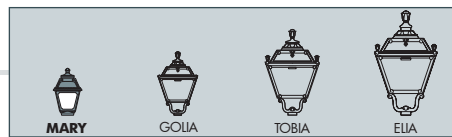
Q18.151.F1R



Q18.131.F1R



Q18.120.F1R



BISSO/MARY	
<b>E27</b> lampholder	Q18.131.E27
<b>6,5W</b> filament	Q18.131.F1R
<b>8,5W</b> CCT set	Q18.131.V1K
Pcs 18 Kg 27,6 mc 0,209	

SICHEM/MARY	
<b>E27</b> lampholder	Q18.120.E27
<b>6,5W</b> filament	Q18.120.F1R
<b>8,5W</b> CCT set	Q18.120.V1K
Pcs 18 Kg 29,1 mc 0,209	

MARY	
Q18.000	
Pcs 1 Kg 1 mc 0,011	

MIKROLOT/MARY	
<b>E27</b> lampholder	Q18.110.E27
<b>6,5W</b> filament	Q18.110.F1R
<b>8,5W</b> CCT set	Q18.110.V1K
Pcs 18 Kg 25,4 mc 0,209	

PORPORA/MARY	
<b>E27</b> lampholder	Q18.141.E27
<b>6,5W</b> filament	Q18.141.F1R
<b>8,5W</b> CCT set	Q18.141.V1K
Pcs 1 Kg 3,5 mc 0,024	

MIZAR/MARY resin	
<b>E27</b> lampholder	Q18.151.E27
<b>6,5W</b> filament	Q18.151.F1R
<b>8,5W</b> CCT set	Q18.151.V1K
Pcs 1 Kg 2,8 mc 0,044	