

GARDEN REVIVAL  
GARDEN CLASSIC  
BOLLARD  
UP&DOWN  
DOWNLIGHT  
IN-GROUND  
BRICKLIGHT  
FLOODLIGHT  
BULKHEAD  
SOLAR  
URBAN CLASSIC  
URBAN REVIVAL  
URBAN MODERN  
POST  
LAMPS

# GLOBE 300 CLASSIC

MEDIUM SIZE



Ø 300 mm PMMA globe, complete with classic globe base made of shockproof resin material, UV-rays stabilized, rust and corrosion-free. Suitable for post top, hanging and wall installation. Supplied as optional with TÜV-CB certified, long-life and efficient **LED lamps** suitable for outdoor use. Insulation class II, protection rating IP 55.

*Globo Ø 300 mm in polimetilmetacrilato (PMMA) completo di base classica realizzata in resina antiurto, stabilizzata ai raggi UV, inattaccabile da ruggine e corrosione. Idoneo per il montaggio a palo, a sospensione o a parete. Fornito anche completo di lampadine LED adatte ad uso in ambiente esterno, certificate TÜV-CB, di lunga durata ed elevata efficienza. Classe di isolamento II, grado di protezione IP55.*



G30.162



G30.111

6,5W 800 lm	8,5W 920 lm	11W 1200 lm	
2700 K	2700 K	4000 K	6500 K
+80°C -30°	90% HUMIDITY	VOLTAGE SURGE RESISTANT	
<b>INDOOR &amp; OUTDOOR USE</b>			





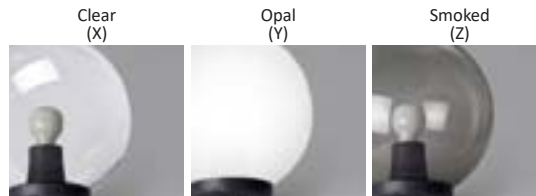

**GLOBE 300 CLASSIC - COMPONENTS**

IP55



Ø 300 mm **GLOBE** made of UV-rays stabilized polymethylmethacrylate (PMMA), one piece only. Available in clear, opal or smoked colour.

***GLOBO** Ø 300 mm in polimetilmetacrilato (PMMA), resistente all'ingiallimento ed ai raggi UV, realizzato in un unico pezzo. Disponibile nei colori trasparente, bianco o fumé.*



**GLOBE BASE** with classic design, made of shockproof resin material, UV-rays stabilized, rust and corrosion-free. Supplied complete with E27 lampholder.

***REGGIBOCCIA** con disegno classico realizzato in resina antiurto, stabilizzato ai raggi UV, inattaccabile da ruggine e corrosione. Fornito completo di portalampada E27.*

**GLOBE 300 CLASSIC**

G30.B30 \*



**Dimensions and weight**

Height: 310 mm  
Diameter: 300 mm  
Weight: 1,1 Kg

**Moulded colours:**

Black White

**Painted colours:**

Antique green Antique bronze

**Diffuser PMMA:**

Clear Opal Smoked

**E27 FILAMENT**



- Perfect **MATCHING WITH DECORATIVE LANTERNS.**
- **SUITABLE FOR OUTDOOR USE:** 100-240V driver.
- **360°OMNIDIRECTIONAL LIGHT. HIGH EFFICIENCY:** 90% ENERGY SAVING.

**E27 CCT SET(\*)**



- **A60 CCT SETTABLE:** 2700K/4000K/6500K.
- **SUITABLE FOR OUTDOOR USE:** 100-240V driver.
- **EYE COMFORT** opal glass.
- **HIGH EFFICIENCY:** >85% ENERGY SAVING.

**100 - 240 V**

\*ADD. SUFFIX

suitable lamps: CFL-LED		<b>E27</b> lampholder only		.E27
LAMP	POWER	LUMINOUS FLUX UP TO	COLOUR TEMP.	
FILAMENT LED E27	6,5W	800 lm	2700 K	.F1R
CCT SET LED E27	8,5 W	920 lm	6500 K	.V1K
			4000 K	
			2700 K	
CCT SET LED E27	11 W	1200 lm	6500 K	.T1K
			4000 K	
			2700 K	

6,5W filament = 60W incandescent  
8,5W CCT = 75W incandescent  
11W CCT = 75W incandescent

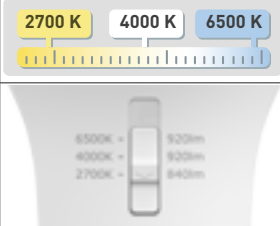
**SAVE up to 89%**

**LED LAMPS**



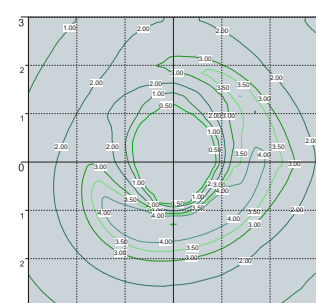
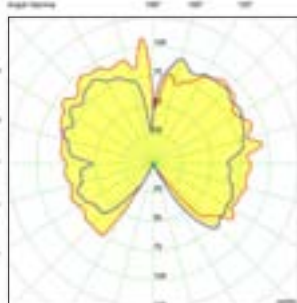
Comply with: EU2019/2015  
EU2019/2020  
Technical details on page 636.

**CCT SETTABLE LED LAMP(\*)**



CCT switch settable in three different positions, to select the desired Kelvin temperature (2700K/4000K/6500K) and get a customized ambiance.

**PHOTOMETRIC DATA SAMPLE**



**GLOBE 300 CLASSIC** clear with Fumagalli Led Lamp CCT set 8,5W.

POST height 2mt  
6x6mt area: average 3,5 lux

The photometric data for all the versions are available upon request or on our website.

\*ADD THESE SUFFIXES TO THE REFERENCES MENTIONED IN THE CATALOGUE

LAMPS POST URBAN MODERN URBAN REVIVAL URBAN CLASSIC SOLAR BULKHEAD FLOODLIGHT BRICKLIGHT IN-GROUND DOWNLIGHT UP&DOWN BOLLARD GARDEN CLASSIC GARDEN REVIVAL

# GLOBE 300 CLASSIC

MEDIUM SIZE



G30.157.S20.F1R



G30.131.F1R



G30.111.F1R



G30.120.F1R

MADE IN ITALY



RICU BISSO/G300 2L	
<b>E27</b>	G30.157.S20.E27
<b>6,5W</b> filament	G30.157.S20.F1R
<b>8,5W</b> CCT set	G30.157.S20.V1K
<b>11W</b> CCT set	G30.157.S20.T1K
Pcs 2 Kg 29,4 mc 0,366	

RICU BISSO/G300 3L	
<b>E27</b>	G30.157.S30.E27
<b>6,5W</b> filament	G30.157.S30.F1R
<b>8,5W</b> CCT set	G30.157.S30.V1K
<b>11W</b> CCT set	G30.157.S30.T1K
Pcs 2 Kg 31,8 mc 0,401	

BISSO/G300	
<b>E27</b>	G30.131.E27
<b>6,5W</b> filament	G30.131.F1R
<b>8,5W</b> CCT set	G30.131.V1K
<b>11W</b> CCT set	G30.131.T1K
Pcs 24 Kg 44,2 mc 0,638	

SICHEM/G300	
<b>E27</b>	G30.120.E27
<b>6,5W</b> filament	G30.120.F1R
<b>8,5W</b> CCT set	G30.120.V1K
<b>11W</b> CCT set	G30.120.T1K
Pcs 24 Kg 44,2 mc 0,638	

GLOBE 300 CLASSIC	
G30.B30.E27	
Pcs 2 Kg 2,2 mc 0,059	

RICU/G300	
<b>E27</b>	G30.157.E27
<b>6,5W</b> filament	G30.157.F1R
<b>8,5W</b> CCT set	G30.157.V1K
<b>11W</b> CCT set	G30.157.T1K
Pcs 2 Kg 22,2 mc 0,274	

GIGI/G300	
<b>E27</b>	G30.156.E27
<b>6,5W</b> filament	G30.156.F1R
<b>8,5W</b> CCT set	G30.156.V1K
<b>11W</b> CCT set	G30.156.T1K
Pcs 2 Kg 20,7 mc 0,242	

ARTU'/G300	
<b>E27</b>	G30.158.E27
<b>6,5W</b> filament	G30.158.F1R
<b>8,5W</b> CCT set	G30.158.V1K
<b>11W</b> CCT set	G30.158.T1K
Pcs 2 Kg 17,7 mc 0,211	

ALOE'R/G300	
<b>E27</b>	G30.163.E27
<b>6,5W</b> filament	G30.163.F1R
<b>8,5W</b> CCT set	G30.163.V1K
<b>11W</b> CCT set	G30.163.T1K
Pcs 2 Kg 8,2 mc 0,146	

MINILOT/G300	
<b>E27</b>	G30.111.E27
<b>6,5W</b> filament	G30.111.F1R
<b>8,5W</b> CCT set	G30.111.V1K
<b>11W</b> CCT set	G30.111.T1K
Pcs 24 Kg 44,2 mc 0,638	

IAFET.R/G300 resin	
<b>E27</b>	G30.162.E27
<b>6,5W</b> filament	G30.162.F1R
<b>8,5W</b> CCT set	G30.162.V1K
<b>11W</b> CCT set	G30.162.T1K
Pcs 2 Kg 7,5 mc 0,117	