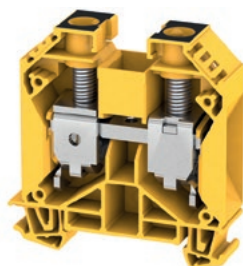


WDU 35

35 mm²



16 x 60 x 62.5
150 / 50
2.5...50

IEC 60947-7-1 Ex e II II 2 G D

IEC	UL	CSA	EN 60079-7
1000			690
125			115
35			35 mm ²

8 kV / 3
B8 / V-0

DEMKO14ATEX1338U

Rated connection	Further connection
2.5...16 / 2.5...50	
2.5...35 / 2.5...35	
4...5 Nm / (M 6)	
18 / 6.5 x 1.2 mm	

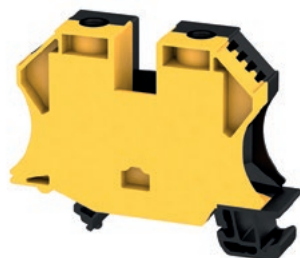
Type	Qty.	Order No.
WDU 35 GE/SW	40	2000060000

Type	current	Qty.	Order No.
WQV 35/2	135 A	50	1053060000
WQV 35/10	112 A	10	1053160000
WAP 16+35 WTW 2.5-10		20	1050100000
WAP 16+35 WTW 2.5-10 BL		20	1050180000
WEW 35/1		50	1059000000
WAD 12 M.BL		50	1055960000
WAD 12 NEUTRAL		50	1056260000

DEK 5/5 MC NE WS	1000	1609801044
WS 12/6.5 MC NE WS	540	1609920000

WDU 35N

35 mm²



16 x 66 x 50.5
150 / 50
2.5...50

IEC 60947-7-1 Ex e II II 2 G D

IEC	UL	CSA	EN 60079-7
500			352
125			110
35			35 mm ²

6 kV / 3
B8 / V-0

DEMKO14ATEX1338U

Rated connection	Further connection
2.5...16 / 2.5...50	
2.5...35 / 2.5...35	
4...5 Nm / (M 6)	
18 / 6.5 x 1.2 mm	

Type	Qty.	Order No.
WDU 35N GE/SW	20	2000090000

Type	current	Qty.	Order No.
WQV 35N/2	135 A	20	1079200000
WQV 35N/4	101 A	20	1079400000
WTW EN		20	1058800000
WEW 35/2		100	1061200000
WAD 16N GE BED		50	1083600000

DEK 5/5 MC NE WS	1000	1609801044
WS 12/6.5 MC NE WS	540	1609920000

WDU 50N

50 mm²



18.5 x 70 x 69.6
192 / 70
10...70

IEC 60947-7-1 Ex e II II 2 G D

IEC	UL	CSA	EN 60079-7
1000			690
150			126
50			50 mm ²

8 kV / 3
B10 / V-0

DEMKO14ATEX1338U

Rated connection	Further connection
6...16 / 6...70	
10...50 / 6...50	
3.5...6 Nm / (M 6)	
24 / S4 (DIN 6911)	

Type	Qty.	Order No.
WDU 50N GE/SW	10	2000080000

Type	current	Qty.	Order No.
WQV 50N/2	150 A	5	1834060000
WQV 50N/3	150 A	5	1834070000
WQV 50N/4	150 A	5	1834080000
WEW 35/1		50	1059000000
WAD 20 GE WSD		10	9512260000

WZAD 50N		5	1872720000
DEK 5/5 MC NE WS	1000	1609801044	
WS 12/6.5 MC NE WS	540	1609920000	

