

Time saving

- Quick installation as the products are delivered with clamping yoke open
- Identical contours for easier planning

Space saving

- Small „W-Compact“ size saves space in the panel
- Two conductors can be connected for each contact point

Safety

- The clamping yoke properties compensate for temperature-indexed changes to the conductor to prevent loosening
- Vibration-resistant connectors – ideal for applications in harsh conditions
- Protection against incorrect conductor entry
- Copper current bar for low voltages, clamping yoke and screw made of hardened steel
- Precise clamping yoke and current bar design for safe contact with even the smallest of conductors

Overview

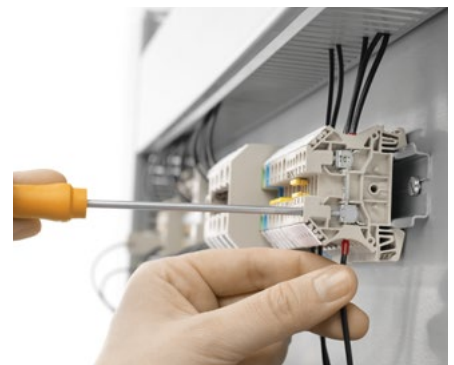
You can rely on it: thanks to the range of models and real flexibility, our terminal blocks with clamping yoke technology can be used in a wide range of different applications.

Universal application:

Numerous national and international approvals and qualifications in accordance with a variety of application standards make the W-series a universal connection solution, especially in harsh conditions.

Varied product assortment with wide clamping range:

Our terminal blocks with clamping yoke technology are available in both standard and compact designs. The compact design covers wire cross-sections from 0.05 mm² to 150 mm² and helps save space in the panel. The standard version covers conductor cross sections of up to 240 mm². The identical contours of the terminal blocks make configuration easier and reduces the quantity of accessories required.



Screw connection with clamping yoke technology (W-Series)

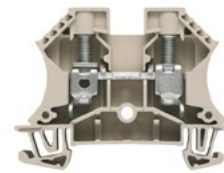
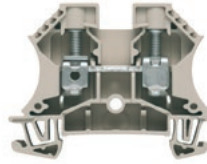
Feed-through terminal blocks

WDU 10

10 mm²

WDU 10 IR

10 mm²



Width/Height/Depth	mm
max. current / max. cond. cross-section	A/mm ²
Max. clamping range	mm ²

9.9 x 60 x 46.5
76 / 16
1.31...16

9.9 x 60 x 46.5
76 / 16
1.31...16

Technical data

Rated data	
Rated voltage	V
Rated current	A
for wire cross-section	mm ²
Rated impulse withstand voltage / Pollution severity	
Gauge to IEC 60947-1 / UL 94 flammability rating	
Approvals	
Clamped conductors (H05V/H07V)	
Solid / Stranded	mm ²
Flexible / Flexible with ferrule	mm ²
Tightening torque (clamping screw for copper conductors)	-
Stripping length / Blade size	mm/-
2 conductors with same cross-section (H05V/H07V)	
Solid / Stranded	mm ²
Flexible / Flexible with ferrule	mm ²
Note	

IEC 60947-1	Ex e II	Ex	II 2 G D
IEC	UL	CSA	EN 60079-7
1000	600	600	690
57	65	65	57
10	AWG 18...6	AWG 18...6	10 mm ²
8 kV / 3			
B6 / V-0			
CE CB IEC KEMA TÜV VDE DEMKO14ATEX1338U			
Rated connection		Further connection	
1.5...16 / 1.5...16			
1.5...16 / 1.5...16			
1.2...1.9 Nm / (M 4)			
12 / 1.0 x 5.5 mm			
1.5...6 / 0.5...6			
0.5...6 / 0.5...6			
Note max. current of terminal (76 A) when using WQV! Tighten AWG 6/7 and H07V-R16 to 2.4 Nm.			

IEC 60947-1	Ex e II	Ex	II 2 G D
IEC	UL	CSA	EN 60079-7
1000			
57			
10			
8 kV / 3			
B6 / V-0			
Rated connection		Further connection	
1.5...16 / 1.5...16			
1.5...16 / 1.5...16			
1.5...1.8 Nm / (M 4)			
12 / TX 15			

Ordering data

Version	
	dark beige
	blue
	black (combi clip-on feet TS 32/25)
Note	

Type	Qty.	Order No.
WDU 10	50	1020300000
WDU 10 BL	50	1020380000
1000 VDC rated voltage tested. For alternative colours, see section on W-series accessories – specific functions.		

Type	Qty.	Order No.
WDU 10 IR	50	1393380000

Accessories

Screwable cross-connection	
	2-pole
	10-pole
End plate / Partition plate	
	dark beige
	Blue
	dark beige
	Blue
End bracket	
	dark beige
Testing / Checking	
	Standard
Cover	
	Blank, yellow
	Blank, white
Identification systems	
Hak. Cable lugs	

Type	current	Qty.	Order No.
WQV 10/2	57 A	50	1052560000
WQV 10/10	57 A	20	1052460000
WAP 2.5-10		50	1050000000
WAP 2.5-10 BL		50	1050080000
WAP 16+35 WTW 2.5-10		20	1050100000
WAP 16+35 WTW 2.5-10 BL		20	1050180000
WEW 35/2		100	1061200000
WTA 3 WDU4		25	1632350000
WAD 8 MC NE GE		48	1112950000
WAD 8 MC NE WS		48	1112940000
DEK 5/5 MC NE WS		1000	1609801044
WS 12/6.5 MC NE WS		540	1609920000

Type	current	Qty.	Order No.
WQV 10/2	57 A	50	1052560000
WQV 10/10	57 A	20	1052460000
WAP 2.5-10		50	1050000000
WAP 2.5-10 BL		50	1050080000
WAP 16+35 WTW 2.5-10		20	1050100000
WAP 16+35 WTW 2.5-10 BL		20	1050180000
WEW 35/2		100	1061200000
WTA 5/1		25	1051260000
WAD 8 MC NE GE		48	1112950000
WAD 8 MC NE WS		48	1112940000
DEK 5/5 MC NE WS		1000	1609801044
WS 12/6.5 MC NE WS		540	1609920000

For detailed information on other accessories and application in the online catalogue

Cross-connections, socket and test plug, see section "W series accessories". Only 400 V with the use of shield bus LS 2.8 1056400000.