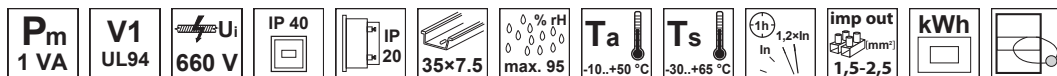
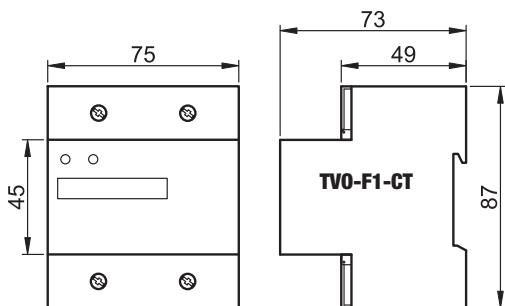


Contor electric monofazat pentru transformator de curent



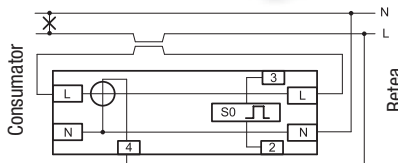
TRACON		U_n	I_b (I_{max})		imp/kWh S0					
TVO-F1-CT	CT		220-240 V AC	5A/CT	0,002Ip-Ip	6.400	1	16	10	260 g

Ip – Curentul circuitului primar al reductorului de curent
CT – Reductor de curent



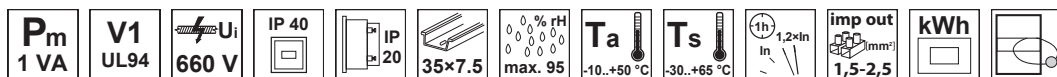
**RELEVANT STANDARD
IEC 61036**

**RELEVANT STANDARD
EN 62053**

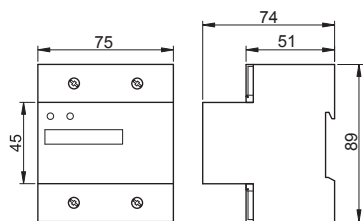


imp/kWh S0	U_n	L_{imp}	I_n
	min. 18 V, max. 27 V		max. 27 mA
	>30 ms		

Contor monofazat de energie, tip fereastră



TRACON		U_n	I_b (I_{max})		imp/kWh S0					
TVO-F1-WT	DIRECT		220-240 V AC	30 (100) A	80 mA-100 A	800	1	25	16	200 g



Conductoarele trebuie trecute prin orificiu (fereastră), prin strângerea șuruburilor izolația se strângunge, stabilindu-se contactul electric. Pentru conductoarele cu secțiune mai mică este atașat un inel de reducere.



imp/kWh S0	U_n	L_{imp}	I_n
	min. 18 V, max. 27 V		max. 27 mA
	>30 ms		

**RELEVANT STANDARD
IEC 61036**

