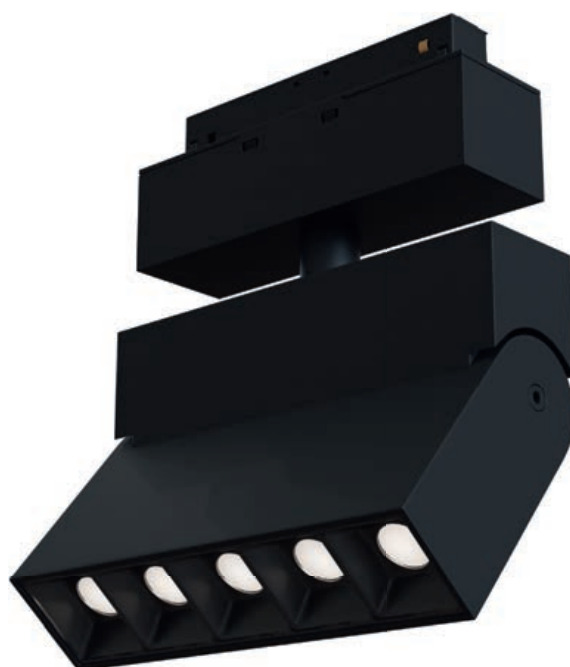


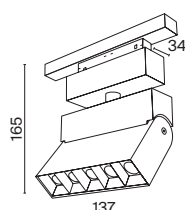
Points



3

3 TR015-2-10W3K-B

TR015-2-10W4K-B



💡 LED 11W
 w = 34 x l = 137 x h = 175,
 175/175 mm
 700 lm, 3000 K, >90 Ra, 30°,
 AC48

NEW    

💡 LED 11W
 w = 34 x l = 137 x h = 175,
 175/175 mm
 800 lm, 4000 K, >90 Ra, 30°,
 AC48

NEW    