

40.

CURRENT TRANSFORMERS

PURPOSE

Current transformer is used for the proportional changes of large currents to lower values, adapted to ranges of control and measuring devices.

TI-30 ÷ TI-80

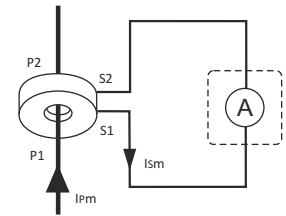


TH-35 rail adapter



norm no.	IEC 60044-1
nominal secondary current Is	5A
rated voltage	0.66kV AC
insulation breakdown voltage	3kV/1min.
frequency	50/60Hz
security factor	FS<5
working temperature	-5÷40°C
S1/S2 terminal	4mm ² screw terminals
mounting	board/busbar
position	vertical/horizontal
protection level	IP20

Type	Transmission I _p /I _s	Class	Power [VA]	P1/P2 hole dimensions [mm]	Dimensions W×H [mm]	Weight [kg]
TI-30	30/5	0.5	1	∅22	87.5×104	0.135
TI-40	40/5	0.5	1	∅22	87.5×104	0.135
TI-50	50/5	0.5	2.5	∅22	87.5×104	0.135
TI-60	60/5	0.5	2.5	∅22	87.5×104	0.135
TI-75	75/5	0.5	2.5	∅22	87.5×104	0.135
TI-80	80/5	0.5	2.5	∅22	87.5×104	0.135



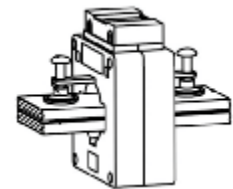
TI-100 ÷ TI-600



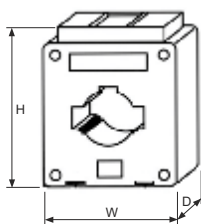
assembling accessories

norm no.	IEC 60044-1
nominal secondary current Is	5A
rated voltage	0.66kV AC
insulation breakdown voltage	3kV/1min.
frequency	50/60Hz
security factor	FS<5
working temperature	-5÷40°C
S1/S2 terminal	4mm ² screw terminals
mounting	board/busbar
position	vertical/horizontal
protection level	IP20

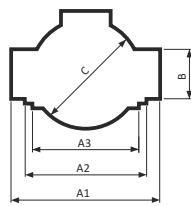
Type	Transmission I _p /I _s	Class	Power [VA]	P1/P2 hole dimensions A1/A2/A3×B; C [mm]	Dimensions W×H×D [mm]	Weight [kg]
TI-100	100/5	0.5	2.5	30/25/20×10; ∅22	61×81×34	0.235
TI-150	150/5	0.5	2.5	30/25/20×10; ∅22	61×81×34	0.235
TI-200	200/5	0.5	5.0	30/25/20×10; ∅22	61×81×34	0.235
TI-250	250/5	0.5	5.0	30/25/20×10; ∅22	61×81×34	0.235
TI-300	300/5	0.5	5.0	30/25/20×10; ∅22	61×81×34	0.235
TI-400	400/5	0.5	10.0	40/30/- ×10; ∅30	75×99×40	0.305
TI-600	600/5	0.5	10.0	40/30/- ×10; ∅30	75×99×40	0.305



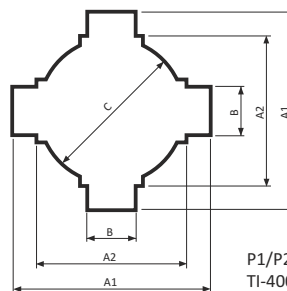
busbar assembly



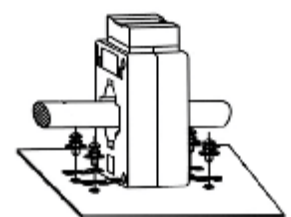
dimensions



P1/P2 hole for:
TI-100; TI-150; TI-200;
TI-250; TI-300



P1/P2 hole for:
TI-400; TI-600



baseplate assembly