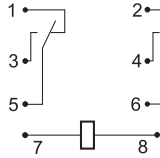
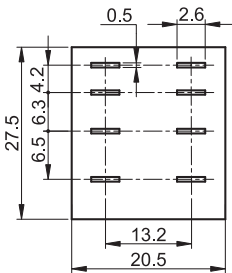


## Relee miniaturizate

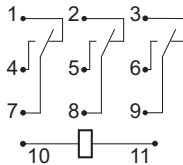
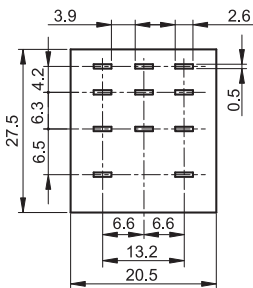
<b>I<sub>e</sub></b> (AC 1, 230V) <b>3 A</b>	<b>P<sub>m</sub></b> 1,2 VA AC	<b>P<sub>m</sub></b> 0,9 W DC	<b>U<sub>test</sub></b> 1min 1,5 kV	<b>U<sub>i</sub></b> 250 V	<b>R</b> max. 50 mΩ	<b>TEST</b> ×10 <sup>7</sup>	<b>T<sub>a</sub></b> 40...+55°C	<b>Legendă pictograme</b>	<b>J/0</b>
---	-----------------------------------	----------------------------------	---	-------------------------------	---------------------------	---------------------------------	------------------------------------	---------------------------	------------

### Cu 2 perechi de contacte (2 × C0)



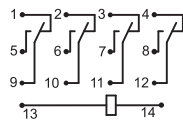
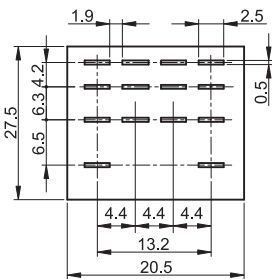
TRACON	U <sub>m</sub>	VDC VAC	A		
<b>RM09-240AC</b>	AC 230 V	3 A	230 V AC 28 V DC	35 g	<b>RSPYF-08A</b>
<b>RM09-110AC</b>	AC 110 V				
<b>RM09-48AC</b>	AC 48 V				
<b>RM09-24AC</b>	AC 24 V				
<b>RM09-12AC</b>	AC 12 V				
<b>RM09-110DC</b>	DC 110 V				
<b>RM09-48DC</b>	DC 48 V				
<b>RM09-24DC</b>	DC 24 V				
<b>RM09-12DC</b>	DC 12 V				

### Cu 3 perechi de contacte (3 × C0)



TRACON	U <sub>m</sub>	VDC VAC	A		
<b>RM12-240AC</b>	AC 230 V	3 A	230 V AC 28 V DC	35 g	<b>RSPYF-11A</b>
<b>RM12-110AC</b>	AC 110 V				
<b>RM12-48AC</b>	AC 48 V				
<b>RM12-24AC</b>	AC 24 V				
<b>RM12-12AC</b>	AC 12 V				
<b>RM12-110DC</b>	DC 110 V				
<b>RM12-48DC</b>	DC 48 V				
<b>RM12-24DC</b>	DC 24 V				
<b>RM12-12DC</b>	DC 12 V				

### Cu patru perechi de contacte (4 × C0)

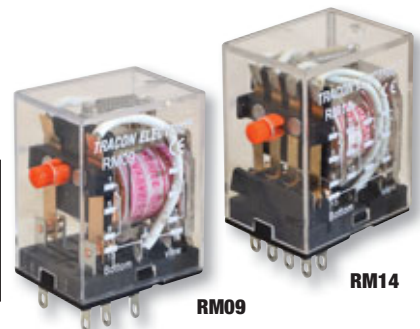
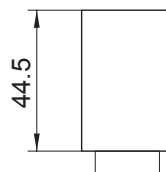


TRACON	U <sub>m</sub>	VDC VAC	A		
<b>RM14-220AC</b>	AC 230 V	3 A	230 V AC 28 V DC	35 g	<b>PYF14A RSPMF-14</b>
<b>RM14-110AC</b>	AC 110 V				
<b>RM14-48AC</b>	AC 48 V				
<b>RM14-24AC</b>	AC 24 V				
<b>RM14-12AC</b>	AC 12 V				
<b>RM14-110DC</b>	DC 110 V				
<b>RM14-48DC</b>	DC 48 V				
<b>RM14-24DC</b>	DC 24 V				
<b>RM14-12DC</b>	DC 12 V				

Echipeate cu două, trei sau patru contacte alternante, au 8, 11 sau 14 borne cu care se introduc în socluri. Aparatele sunt echipate cu buton de testare (marcat: TEST), care servește verificării funcționării circuitelor electrice comandate.



**J/8-J/9**



**RM09**

**RM14**