

Voltage monitoring relay with current and power control

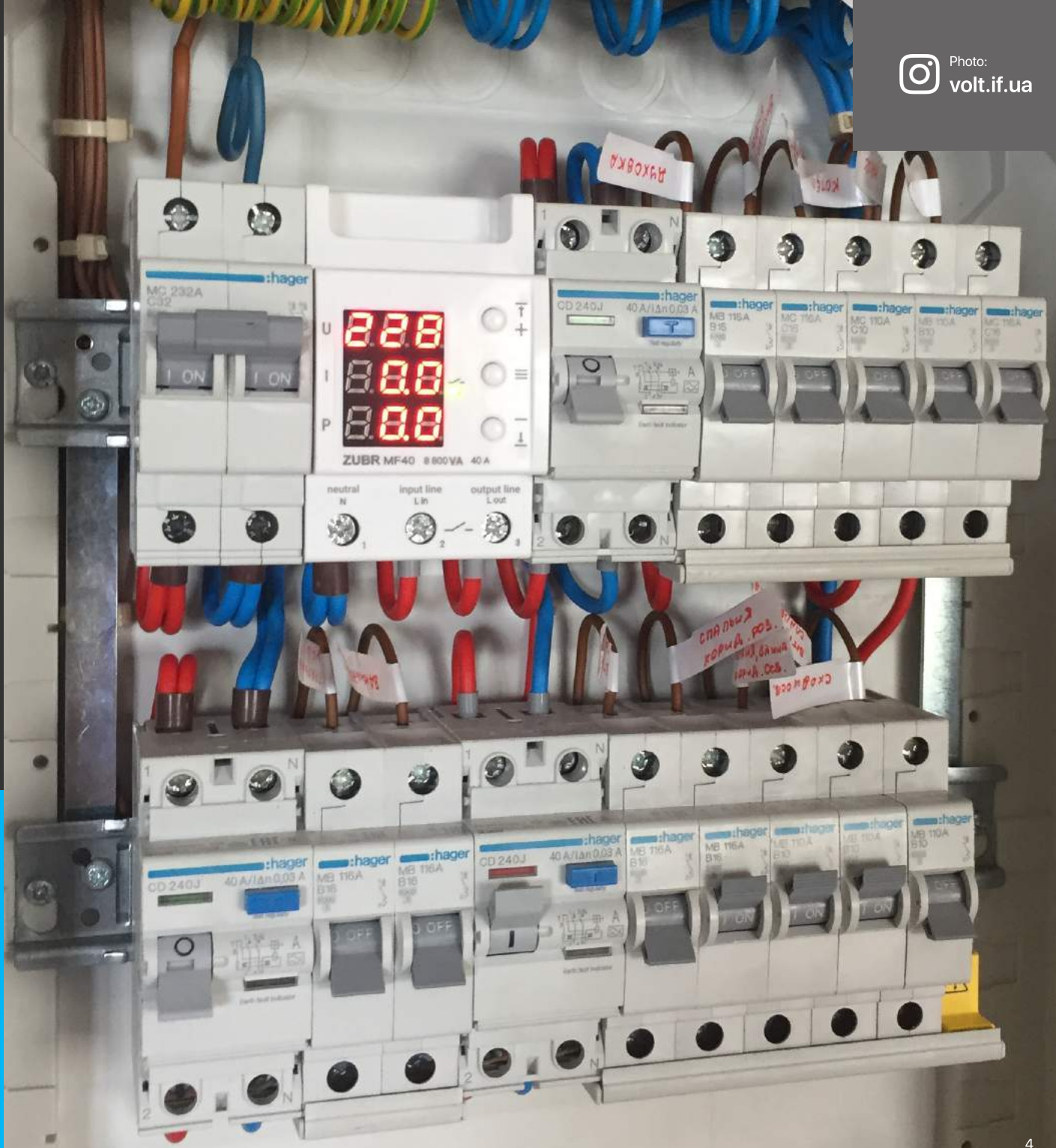
Purpose:

ZUBR MF multifunctional relay is designed to protect the single phase electric network from unacceptable voltage deviations, as well as exceeding current consumption and actual power.

With it, you can limit the actual power consumption of connected equipment. The relay operates on the cutoff principle: if the set values are exceeded, it turns off the load. It is additionally equipped with thermal protection.



ZUBR MF



Comparison of single-phase DIN rail voltage monitoring relays



MF



D2



Dt



D

	MF	D2	Dt	D
Rated load current	25, 32, 40, 50, 63 A	40, 50, 63 A	25, 32, 40, 50, 63 A	16, 25, 32, 40, 50, 63 A
Housing width	3 modules	2 modules	3 modules	3 modules
Restrictions on current	✓	✗	✗	✗
Restrictions on active power	✓	✗	✗	✗
View the latest voltage alarm	✓	✓	✓	✓
Alarm log	✗	100 values	50 values	50 values
Switch-on load delay <small>Adjustable time before switching on the load after an accident. It is used to protect compressor equipment, such as refrigerators to increase the service life.</small>	✓	✓	✓	✓
Choice of delay type <small>Types of switch-on delay: countdown from the beginning of the accident or from the moment of voltage recovery.</small>	✗	✓	✗	✗
Thermal protection	✓	✓	✓	✗
True RMS	✓	✓	✓	✗
Professional load switch-off model	✓	✓	✓	✗
Correction of screen indications	voltage and current	voltage	voltage	voltage
Adjustable delay in case of voltage failure <small>For more accurate adjustment of the protection response time for AC fails.</small>	✗	✓	✗	✗
Screen brightness adjustment	✗	✓	✗	✗
Switching power supply	✓	✓	✗	✗