

## Limitatoare de cursă, tip LS7...

<b>I<sub>th</sub></b> 10 A	<b>I<sub>e</sub></b> (AC 1, 230 V) 5 A	<b>I<sub>e</sub></b> (AC 16, 230 V) 2 A	<b>I<sub>e</sub></b> (DC 13, 250 V) 0,3 A	<b>U<sub>i</sub></b> 500 V	<b>mm<sup>2</sup></b> 0,5-1,5	<b>×10<sup>6</sup></b> x1.800	<b>ON-OFF-ON</b> ↑ <b>sc/h</b> x1.800	<b>T<sub>a</sub></b> -25...+55°C	<b>IP</b> 40	<b>Legendă pictograme</b>	<b>K/0</b>
-------------------------------	---	--	--	-------------------------------	----------------------------------	----------------------------------	--	-------------------------------------	-----------------	---------------------------	------------

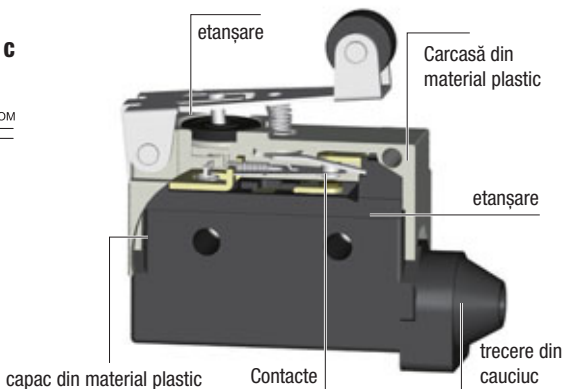
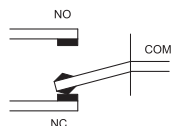
**RELEVANT STANDARD  
EN 60947-1**

**RELEVANT STANDARD  
EN 60947-5-1**

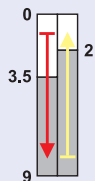
- carcasă solidă
- contact alternant
- punct de conexiune cu papuci inelari
- cablare ușoară
- mai multe mecanisme de comutare



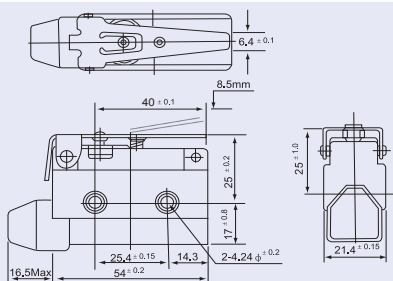
### Tipul contactelor: C



### Varianta cu tijă și arc

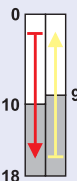


Cursa de acționare (mm)

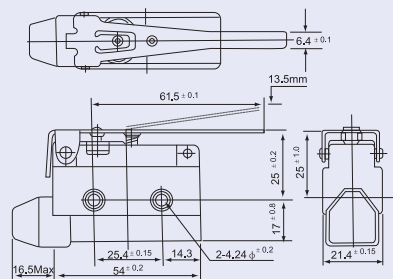


**TRACON LS7140**

### Varianta cu tijă și arc

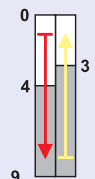


Cursa de acționare (mm)

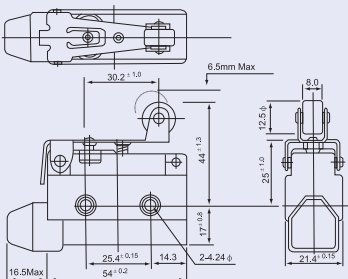


**TRACON LS7120**

### Varianta cu tijă, arc și rolă



Cursa de acționare (mm)



**TRACON LS7141**