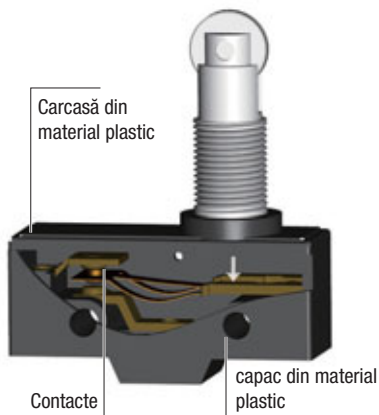
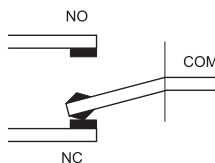


Limitatoare de cursă tip LS15

I_{th} 15 A	I_e (AC 1, 230 V) 5 A	I_e (AC 15, 230 V) 2 A	I_e (DC 13, 230 V) 0,3 A	U_i 500 V	mm² 0,5-1,5	sc/h ×1.800	T_a -25...+55°C	IP 00
-------------------------------	---	--	--	-------------------------------	----------------------------------	-----------------------	-------------------------------------	-----------------



Tipul contactelor: C

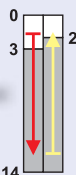


RELEVANT STANDARD
EN 60947-1

RELEVANT STANDARD
EN 60947-5-1

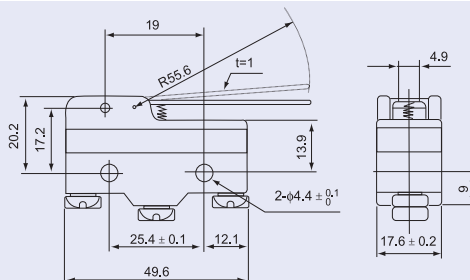
- carcasă solidă
- contact alternant
- punct de conexiune cu papuci inelari
- cablare ușoară
- mai multe mecanisme de comutare

Varianta cu tijă și arc

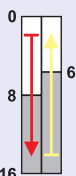


Cursa de acționare (mm)

TRACON LS15GM-B

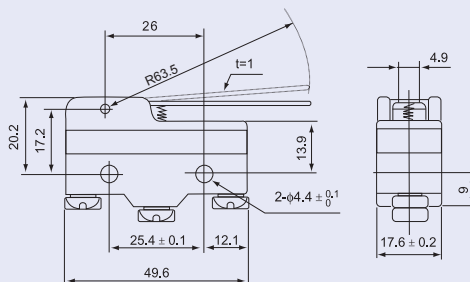


Varianta cu tijă și arc

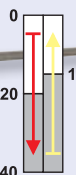


Cursa de acționare (mm)

TRACON LS15GW-B



Varianta cu tijă și arc



Cursa de acționare (mm)

TRACON LS15HW24-B

