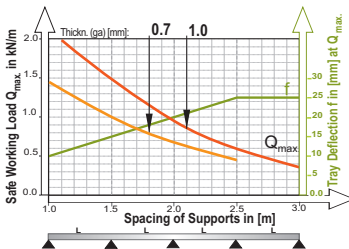
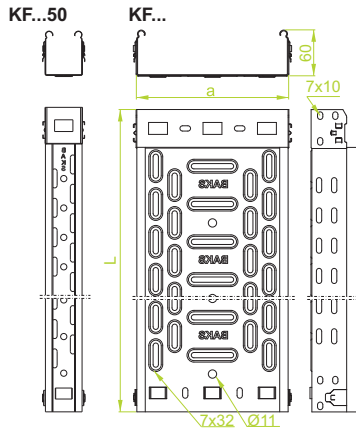




Cable Tray



Width	Usable Cross-Section
50	29 cm ²
100	58 cm ²
150	88 cm ²
200	118 cm ²
300	178 cm ²
400	238 cm ²
500	298 cm ²
600	358 cm ²

APPLICATIONS
Cable routing

KFL...H60

± 0.7 mm

CODE	Width a mm	Length L mm	kg 1 m	Catalogue No.	Qty/m
KFL50H60/2	50	2000	0.98	160923	4/8
KFL50H60/3	50	3000	0.98	161023	4/12
KFL100H60/2	100	2000	1.18	161123	4/8
KFL100H60/3	100	3000	1.18	161223	4/12
KFL150H60/2	150	2000	1.43	161323	4/8
KFL150H60/3	150	3000	1.43	161423	4/12
KFL200H60/2	200	2000	1.68	161523	4/8
KFL200H60/3	200	3000	1.68	161623	4/12
KFL300H60/2	300	2000	2.18	161723	2/4
KFL300H60/3	300	3000	2.18	161823	2/6

KFJ...H60

± 1.0 mm

CODE	Width a mm	Length L mm	kg 1 m	Catalogue No.	Qty/m
KFJ50H60/3	50	3000	1.33	162523	4/12
KFJ100H60/3	100	3000	1.63	162623	4/12
KFJ150H60/3	150	3000	1.98	162723	4/12
KFJ200H60/3	200	3000	2.28	162823	4/12
KFJ300H60/3	300	3000	2.96	162923	2/6
KFJ400H60/3	400	3000	3.65	163023	2/6
KFJ500H60/3	500	3000	4.32	163123	2/6
KFJ600H60/3	600	3000	4.99	163223	2/6

Information on covers for cable trays and fittings – see pages: 62-66

Advantages of new system:

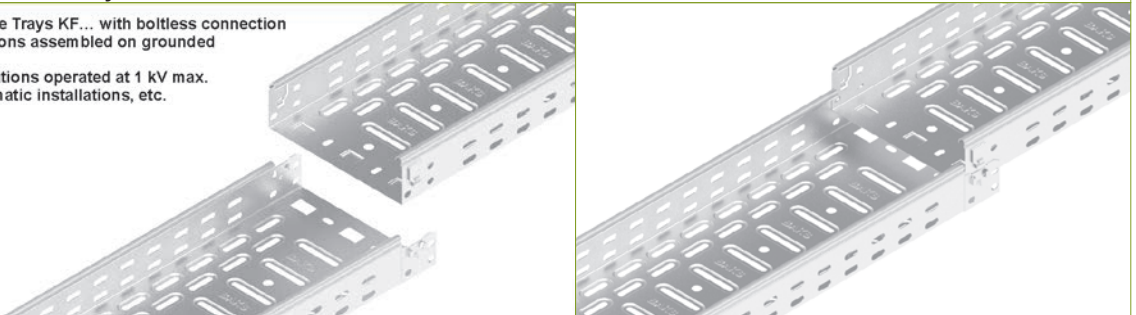
- Fast and easy assembly
- Firm click connection
- Deep stamping around the slots in the bottom increase the strength
- Dense perforation with stamping around the slots for excellent heat transfer – designed to enable cable tray installation on supports from BAKS anywhere within the system
- Slotted holes Ø11 in the cable tray bottom allow for suspension on a threaded rod



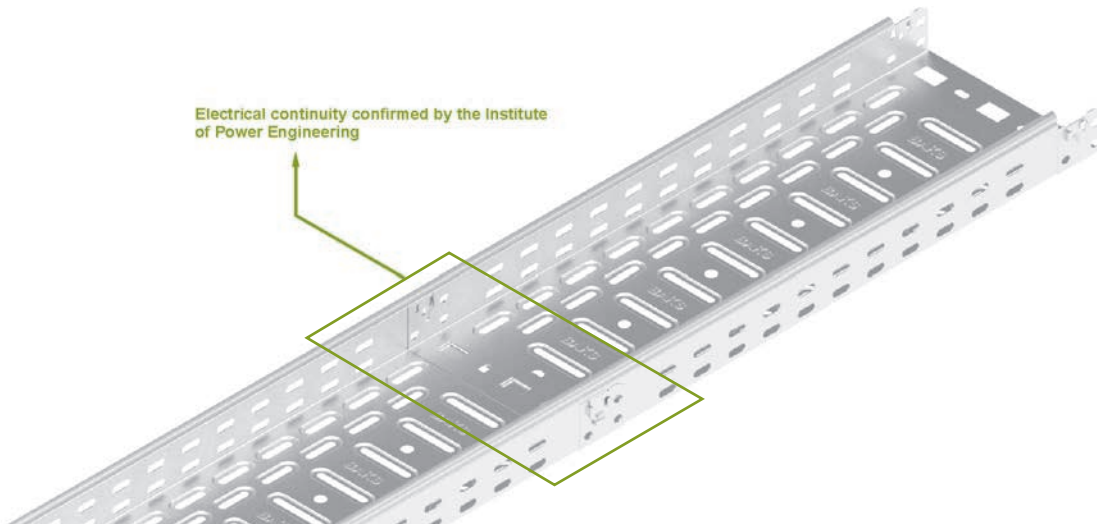
MATERIAL
Steel, strip-galv. acc. to the Sendzimir method PN-EN 10346:2015-09 (SG)
Available finishes:
L - powder coating in a full range of colours (PC) (info p. 4)

Snap fastening of Cable Trays KF...

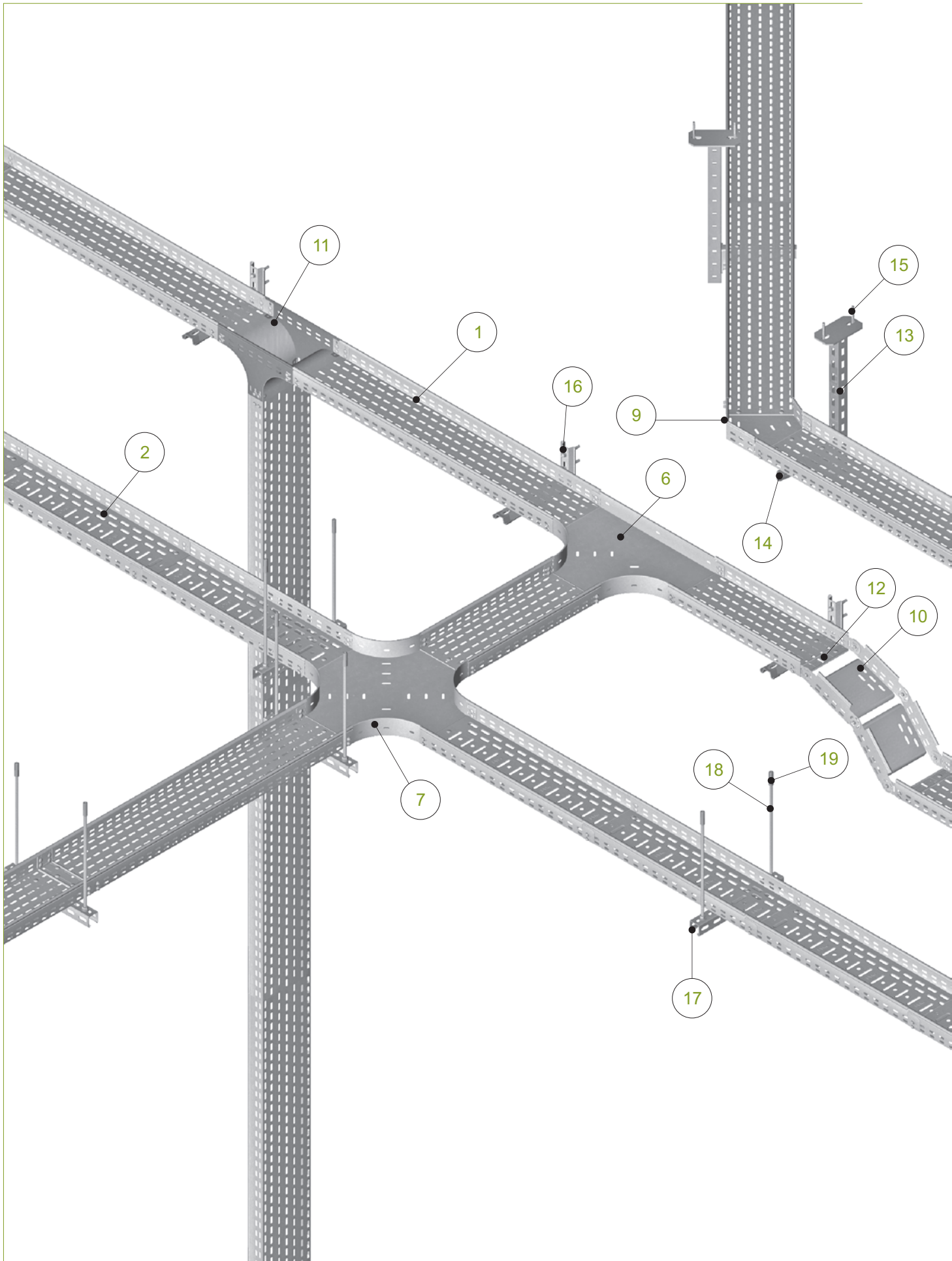
- Applications of Cable Trays KF... with boltless connection**
- In electric installations assembled on grounded steel structures
 - In electrical installations operated at 1 kV max.
 - In hydraulic, pneumatic installations, etc.



Electrical continuity confirmed by the Institute of Power Engineering



Cable Trays - System of Side Heights H30-H110





1. Cable Tray KCJ/KCOJ200H60	I-68
2. Cable Tray KGJ/KGOJ200H60	I-67
3. Straight Connector LPMLH60	I-71
4. Joint Protection Plate BL/BLO200	I-150
5. Horizontal Bend KKPJ200H60	I-73
6. Horizontal Tee TKPJ200H60	I-77
7. Horizontal Cross-over CZKPJ200H60	I-79
8. Horizontal Tee TKJ200H60	I-76
9. Horizontal Bend 45° KKMJ200H60	I-74
10. Adjustable Vertical Bend LLJ200H60	I-86
11. Vertical Tee - Crosswise TRSJ200H60	I-88
12. Edge Protection Plate BZK/BZKO200	I-148
13. Ceiling Bracket WPCW/WPCO	XII-16
14. Bracket WMC/WMCO200	XI-6
15. Anchor Bolt PSRM10x90	X-14
16. Bracket WFL/WFLO200	XI-2
17. Support Channel CWP/CWOP40H40	IX-12
18. Threaded Rod PGM8	X-3
19. Drop-In Anchor TRSM8	X-3
20. Angle Reducer RKJ100H60	I-80
21. Cable Tray KCJ/KCOJ100H60	I-68

