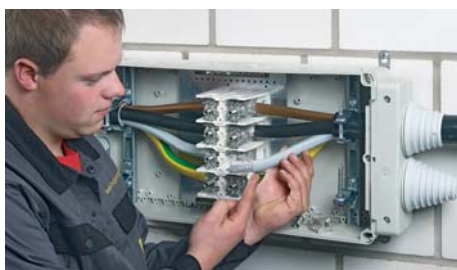
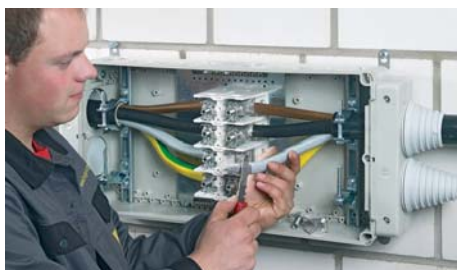


Reference table	
Present types	New types
D 9041	<b>DK 0402 A</b>
K 9061	<b>DK 0604 A</b>
K 9351	<b>DK 2516 A</b>
KF 9251	<b>KF 3550 A</b>
KF 9501	<b>KF 5050 A</b>



### DK Cable junction boxes

**For normal environment and protected outdoor  
With terminals for aluminum and copper conductors**

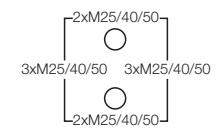
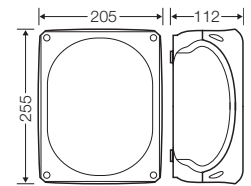
- Separate clamping units for aluminum and copper conductors
- Degree of protection IP 66, In the case of twisted cables IP 54 using cable glands
- Labelling system: label template in the Internet at [www.hensel-electric.de](http://www.hensel-electric.de) - downloads
- Material: polypropylene or polycarbonate
- Burning behaviour:  
Glow wire test in accordance with IEC 60695-2-11: 750 °C / 960 °C, flame-retardant, self-extinguishing
- Colour: grey, RAL 7035
- Before connecting, aluminum conductors must be pre-treated according to the appropriate technical recommendations, see technical information aluminum conductors

**DK Cable junction boxes**  
**With terminals for aluminum and copper conductors**  
**Cable entry via metric knockouts**



**DK 2516 A** NEW  
**6-16 mm<sup>2</sup>, Cu/Alu 3~**

- with terminals
- 5-pole per pole 4 x 6 mm<sup>2</sup> sol/f, 4 x 10 mm<sup>2</sup> sol/f, 4 x 16 mm<sup>2</sup> sol/s/f, conductors are inserted into the screw-type terminal, terminal technology, see annex DK Cable junction boxes
- included cable entry: 3 ESM 40, sealing range Ø 17-30 mm
- with two cable entries M 32 from the rear side
- lid fasteners sealable without accessories
- before connecting, aluminum conductors must be pre-treated according to the appropriate technical recommendations, see technical information aluminum conductors
- external brackets for wall fixing included

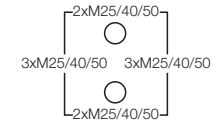
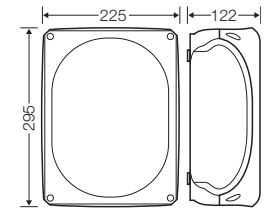


rated insulation voltage	U <sub>i</sub> = 690 V a.c./d.c.
current carrying capacity	76 A
tightening torque for terminal material	3.0 Nm PC (polycarbonate)



**KF 3550 A** NEW  
**1.5-50 mm<sup>2</sup>, Cu/Alu 3~**

- with connecting terminal
- 5-pole per pole 2 x 1 x 1.5-50 mm<sup>2</sup>, conductors are inserted into the screw-type terminal, terminal technology, see annex DK Cable junction boxes
- included cable entry: 2 EDK 40, sealing range Ø 11-30 mm, IP 65
- degree of protection IP 66 / IP 67 / IP 69, order cable glands AKM separately (see cable entry systems LES)
- with two cable entries M 32 from the rear side
- before connecting, aluminum conductors must be pre-treated according to the appropriate technical recommendations, see technical information aluminum conductors
- lid fasteners sealable without accessories
- external brackets for wall fixing included



rated insulation voltage	U <sub>i</sub> = 690 V a.c./d.c.
current carrying capacity	
tightening torque for terminal material	1.5 Nm 1.5-2.5 mm <sup>2</sup> 5.0 Nm 4-10 mm <sup>2</sup> PC-GFS (polycarbonate)

Before connecting, aluminum conductors must be pre-treated according to the appropriate technical recommendations



Conductor ends need to have the oxide layer carefully scraped clean.



Conductor ends need to be rubbed with an acid and alkali free grease and immediately connected



The terminals need to be tightened with the appropriate torque