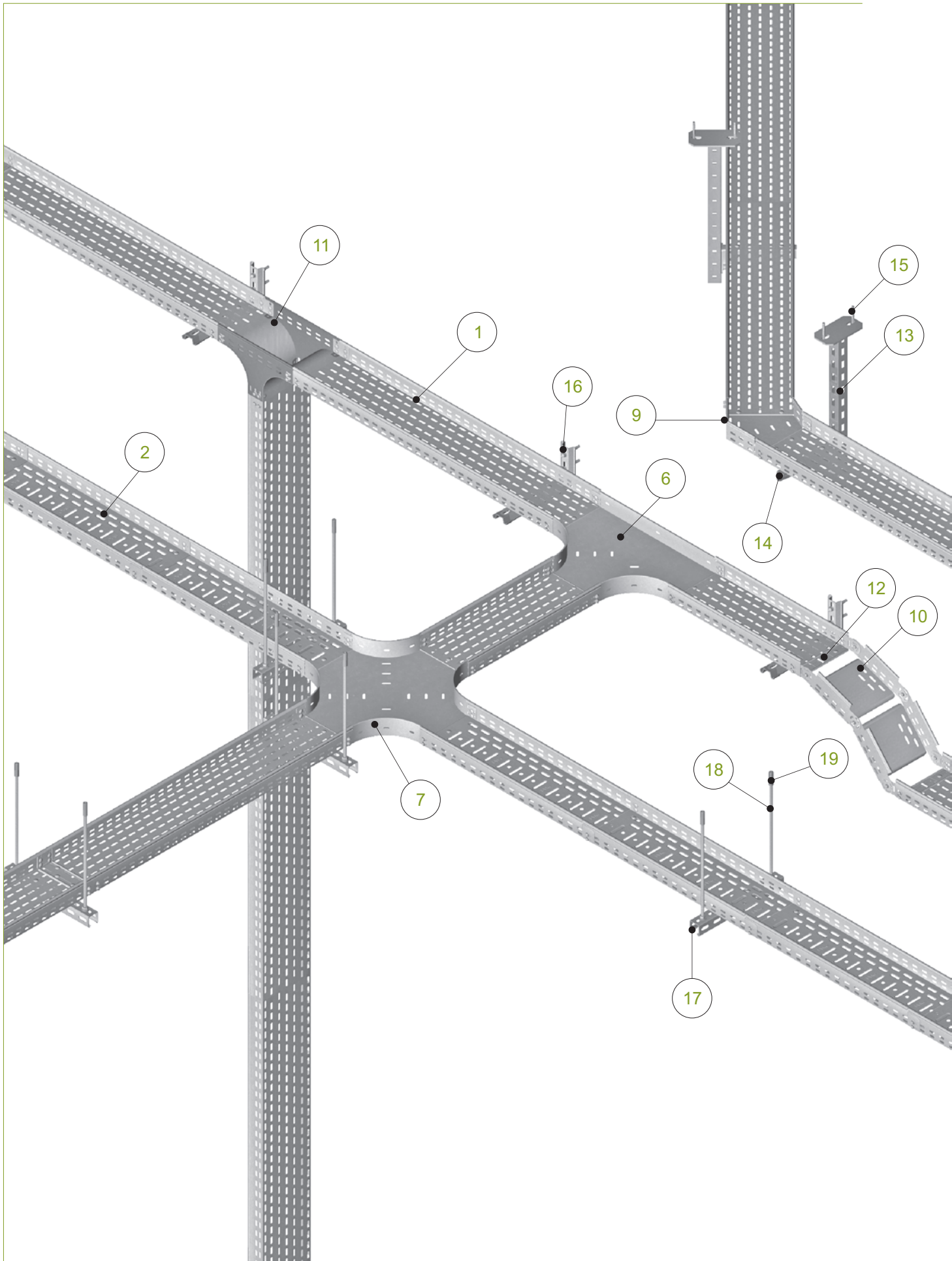
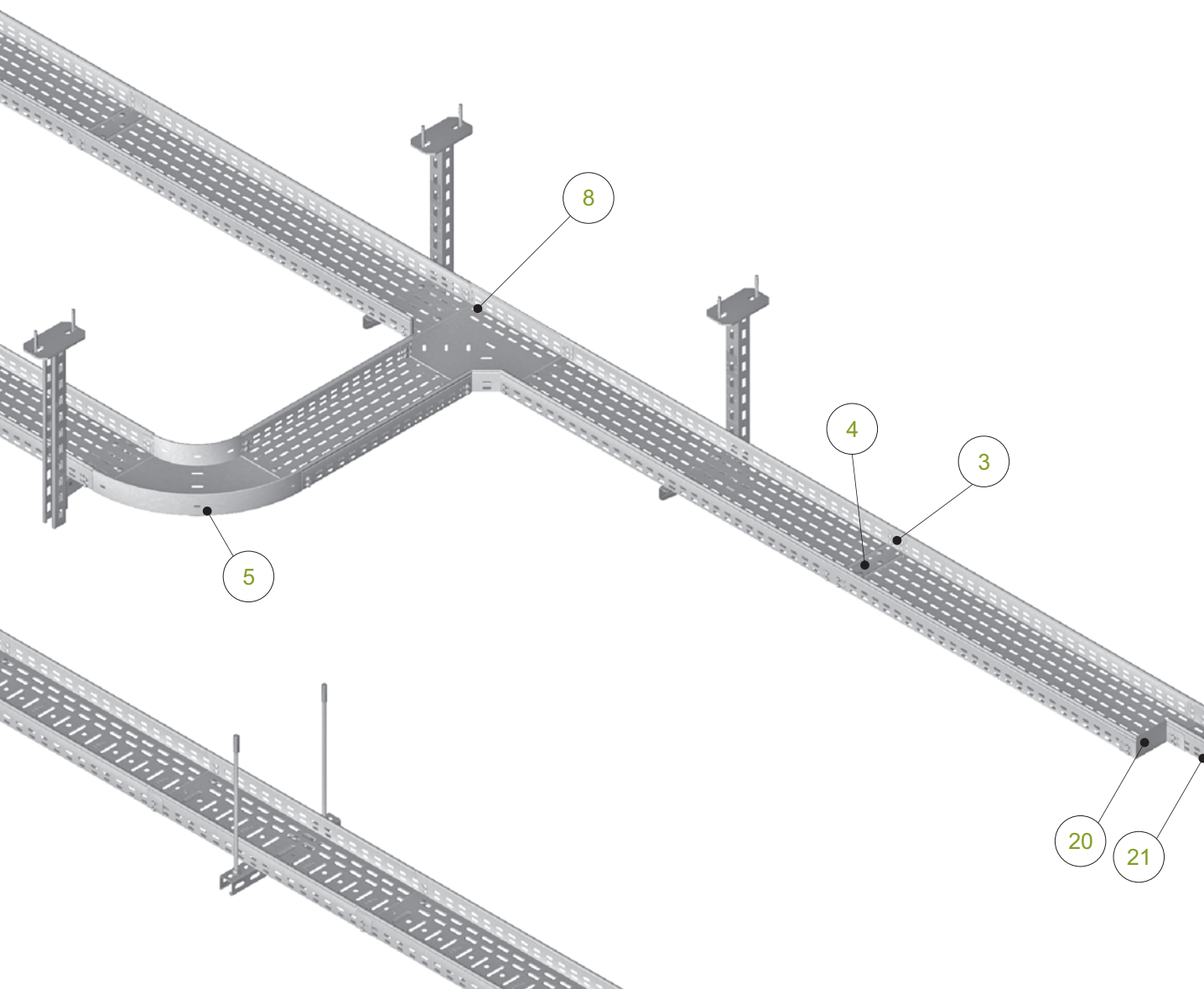


# Cable Trays - System of Side Heights H30-H110



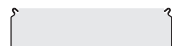
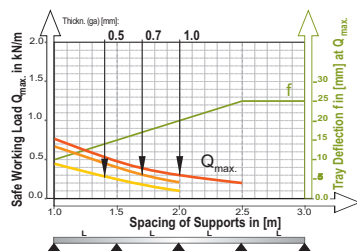
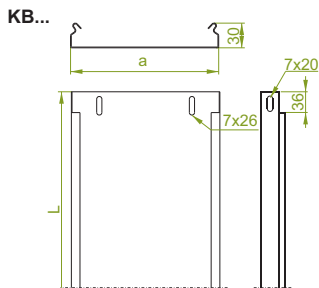


1. Cable Tray <b>KCJ/KCOJ200H60</b> .....	I-68
2. Cable Tray <b>KGJ/KGOJ200H60</b> .....	I-67
3. Straight Connector <b>LPMLH60</b> .....	I-71
4. Joint Protection Plate <b>BL/BLO200</b> .....	I-150
5. Horizontal Bend <b>KKPJ200H60</b> .....	I-73
6. Horizontal Tee <b>TKPJ200H60</b> .....	I-77
7. Horizontal Cross-over <b>CZKPJ200H60</b> .....	I-79
8. Horizontal Tee <b>TKJ200H60</b> .....	I-76
9. Horizontal Bend 45° <b>KKMJ200H60</b> .....	I-74
10. Adjustable Vertical Bend <b>LLJ200H60</b> .....	I-86
11. Vertical Tee - Crosswise <b>TRSJ200H60</b> .....	I-88
12. Edge Protection Plate <b>BZK/BZKO200</b> .....	I-148
13. Ceiling Bracket <b>WPCW/WPCO</b> .....	XII-16
14. Bracket <b>WMC/WMCO200</b> .....	XI-6
15. Anchor Bolt <b>PSRM10x90</b> .....	X-14
16. Bracket <b>WFL/WFLO200</b> .....	XI-2
17. Support Channel <b>CWP/CWOP40H40</b> .....	IX-12
18. Threaded Rod <b>PGM8</b> .....	X-3
19. Drop-In Anchor <b>TRSM8</b> .....	X-3
20. Angle Reducer <b>RKJ100H60</b> .....	I-80
21. Cable Tray <b>KCJ/KCOJ100H60</b> .....	I-68





## Cable Tray



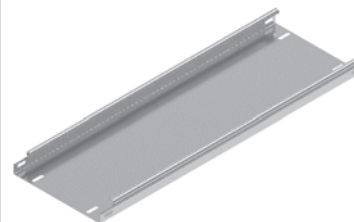
Widths	Usable Cross-Section
35	8.5 cm <sup>2</sup>
50	13 cm <sup>2</sup>
100	28 cm <sup>2</sup>
150	43 cm <sup>2</sup>
200	58 cm <sup>2</sup>
300	88 cm <sup>2</sup>

**APPLICATIONS**  
Cable routing

## KBR...H30

± 0.5 mm

CODE	Widths a mm	Length L mm	Kg 1 m	Catalogue No.	Qty/m
KBR35H30/2	35	2000	0.51	130703	20/40
KBR35H30/3	35	3000	0.51	130803	20/60
KBR50H30/2	50	2000	0.58	130705	20/40
KBR50H30/3	50	3000	0.58	130805	20/60
KBR100H30/2	100	2000	0.81	130710	12/24
KBR100H30/3	100	3000	0.81	130810	12/36
KBR150H30/2	150	2000	1.02	130715	8/16
KBR150H30/3	150	3000	1.02	130815	8/24
KBR200H30/2	200	2000	1.25	130720	6/12
KBR200H30/3	200	3000	1.25	130820	6/18
KBR300H30/2	300	2000	1.69	130730	6/12
KBR300H30/3	300	3000	1.69	130830	6/18



## KBL...H30

± 0.7 mm

CODE	Widths a mm	Length L mm	Kg 1 m	Catalogue No.	Qty/m
KBL35H30/2	35	2000	0.69	130903	20/40
KBL35H30/3	35	3000	0.69	131003	20/60
KBL50H30/2	50	2000	0.78	130905	20/40
KBL50H30/3	50	3000	0.78	131005	20/60
KBL100H30/2	100	2000	1.08	130910	12/24
KBL100H30/3	100	3000	1.08	131010	12/36
KBL150H30/2	150	2000	1.38	130915	8/16
KBL150H30/3	150	3000	1.38	131015	8/24
KBL200H30/2	200	2000	1.68	130920	6/12
KBL200H30/3	200	3000	1.68	131020	6/18
KBL300H30/2	300	2000	2.28	130930	6/12
KBL300H30/3	300	3000	2.28	131030	6/18

## KBJ...H30

± 1.0 mm

CODE	Widths a mm	Length L mm	Kg 1 m	Catalogue No.	Qty/m
KBJ35H30/2	35	2000	0.92	131103	20/40 *
KBJ35H30/3	35	3000	0.92	131203	20/60
KBJ50H30/2	50	2000	1.04	131105	20/40 *
KBJ50H30/3	50	3000	1.04	131205	20/60
KBJ100H30/2	100	2000	1.44	131110	12/24 *
KBJ100H30/3	100	3000	1.44	131210	12/36
KBJ150H30/2	150	2000	1.84	131115	8/16 *
KBJ150H30/3	150	3000	1.84	131215	8/24
KBJ200H30/2	200	2000	2.24	131120	6/12 *
KBJ200H30/3	200	3000	2.24	131220	6/18
KBJ300H30/2	300	2000	3.04	131130	6/12 *
KBJ300H30/3	300	3000	3.04	131230	6/18

\* - available on request in qty over 300 m

Possibility of joining cable tray sections together through sliding one into another and connector-free assembly. For the assembly use Screw Sets SGKM6x10 or SGM6x10.  
Information on Covers for Cable Trays and on Covers for Fittings are available on pages: 153-162

### MATERIAL

Steel, strip-galv. acc. to the Sendzimir method PN-EN 10346:2015-09 (SG)

Available finishes:

F - steel, hot-dip galv.to

PN-EN ISO 1461:2011 (HDG) **only for orders:**

**KBJ... over 300 m**

E - stainless steel (SS), grade 1.4301 (AISI304)

L - powder coating in a full range of colours (PC) (info p. 4)

Thickn. (ga) ≠ [mm]: **0.5 0.7 1.0 1.2 1.5 2.0**