

230V
50-60Hz
3p = 6h

400V
50-60Hz
4p, 5p = 6h

500V
50-60Hz
4p, 5p = 7h



Current	Voltage	Poles	Degree of protection	Hour angle	Type	Packing pcs	Weight g/pc	Dimensions page/pic.
---------	---------	-------	----------------------	------------	------	-------------	-------------	----------------------



IVN 1632

16 A	230 V	3	IP 54	6 h	IVN 1632	14	128	24/31
16 A	400 V	4	IP 44	6 h	IVN 1643	14	146	24/31
16 A	500 V	4	IP 44	7 h	IV 1645	10	160	24/33
16 A	400 V	5	IP 44	6 h	IVN 1653	14	159	24/31



IVN 3253

32 A	230 V	3	IP 54	6 h	IVN 3232	10	217	24/31
32 A	400 V	4	IP 44	6 h	IVN 3243	10	235	24/31
32 A	500 V	4	IP 44	7 h	IV 3245	10	214	24/33
32 A	400 V	5	IP 44	6 h	IVN 3253	10	261	24/31

Screwless



IVB 1653

16 A	400 V	5	IP 44	6 h	IVB 1653	14	152	24/31
32 A	400 V	5	IP 44	6 h	IVB 3253	10	274	24/31



IVNO 1653

16 A	400 V	5	IP 44	6 h	IVNO 1653	14	156	24/32
32 A	400 V	5	IP 44	6 h	IVNO 3253	10	259	24/32

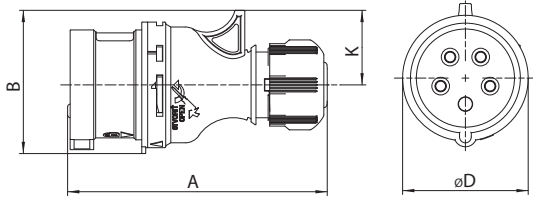
Reversing plug allows change phases by turning the rotary part.



IV 6343

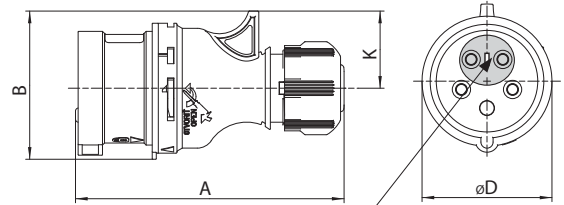
63 A	400 V	4	IP 44	6 h	IV 6343	12	470	24/34
63 A	500 V	4	IP 44	7 h	IV 6345	12	515	24/34

31 IVN, ISB / 16A, 32A



Type / mm	A	B	$\varnothing D$	K
IVN 1632	126	64	64	32
IVN 1643	132	66	64	34
IVN, IVB 1653	132	73	64	38
IVN 3232	160	79	73	41
IVN 3243	160	79	73	41
IVN 3253	160	87	73	45
IVB 3253	160	87	73	45

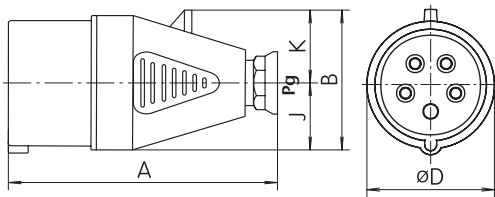
32 IVNO / 16A, 32A



Type / mm	A	B	$\varnothing D$	K
IVNO 1653	132	73	64	38
IVNO 3253	160	87	73	45

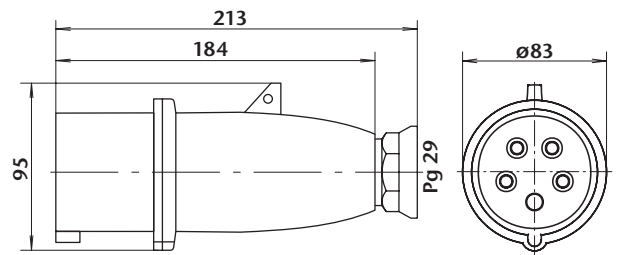
Note: Pin position can be changed by turning the screwdriver in 180 degrees and achieved the phase change.

33 IV / 16A, 32A

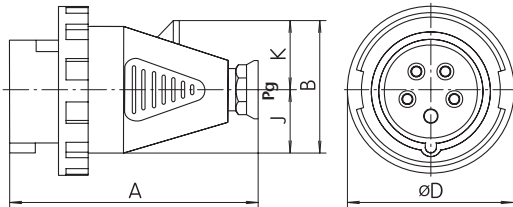


Type / mm	A	B	$\varnothing D$	J	K	Gland
IV 1645	129	67,5	65	32,5	35	Pg 16
IV 3245	154	77	72	36	41	Pg 21

34 IV / 63A

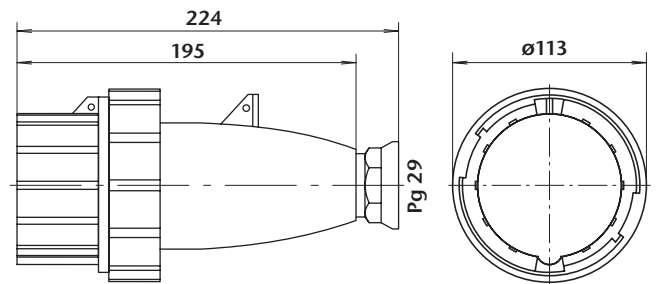


35 IVG / 16A, 32A

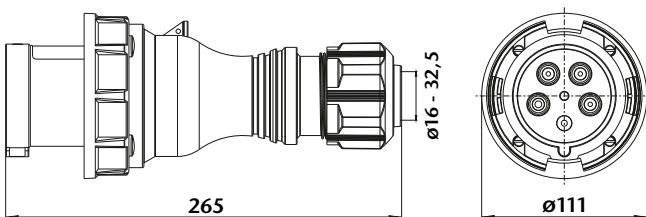


Type / mm	A	$\varnothing D$	J	K	Gland
IVG 1632	123	70	28,5	31	Pg 16
IVG 1643	129	78	32,5	35	Pg 16
IVG 1653	129	87	32,5	39	Pg 16
IVG 3232	154	92,5	36	41	Pg 21
IVG 3243	154	92,5	36	41	Pg 21
IVG 3253	154	100	36	46	Pg 21

36 IVG / 63A



37 IVGN / 63A



38 IVGN / 125A

