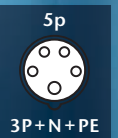
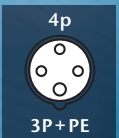
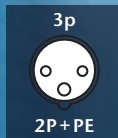


Built-in appliance inlet angled



230V
50-60Hz
3p = 6h

400V
50-60Hz
4p, 5p = 6h

500V
50-60Hz
4p, 5p = 7h

Current	Voltage	Poles	Degree of protection	Hour angle	Type	Packing pcs	Weight g/pc	Dimensions page/pic.
---------	---------	-------	----------------------	------------	------	-------------	-------------	----------------------

16 A	230 V	3	IP 67	6 h	IRG 1632	10	136	26/54
16 A	400 V	4	IP 67	6 h	IRG 1643	10	175	26/54
16 A	400 V	5	IP 67	6 h	IRG 1653	10	200	26/54



IRG 1632

32 A	230 V	3	IP 67	6 h	IRG 3232	12	240	26/54
32 A	400 V	4	IP 67	6 h	IRG 3243	12	237	26/54
32 A	400 V	5	IP 67	6 h	IRG 3253	12	292	26/54



IRG 3253

16 A	400 V	5	IP 67	6 h	IRGR 1653	12	166	27/55
32 A	400 V	5	IP 67	6 h	IRGR 3253	12	293	27/55



IRGR 3253

63 A	400 V	4	IP 67	6 h	IRG 6343	8	813	27/56
------	-------	---	-------	-----	----------	---	-----	-------



IRG 6343

63 A	400 V	5	IP 67	6 h	IRGN1 6353	2	617	27/57
------	-------	---	-------	-----	------------	---	-----	-------



IRGN1 6353

Built-in socket angled.

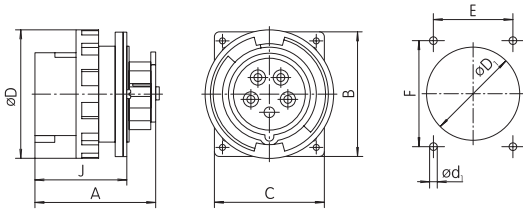
125 A	230 V	3	IP 67	6 h	IRGN 12532	2	790	27/58
125 A	400 V	4	IP 67	6 h	IRGN 12543	2	900	27/58
125 A	500 V	4	IP 67	7 h	IRGN 12545	2	900	27/58
125 A	400 V	5	IP 67	6 h	IRGN 12553	2	1000	27/58
125 A	500 V	5	IP 67	7 h	IRGN 12555	2	1000	27/58



IRGN 12553

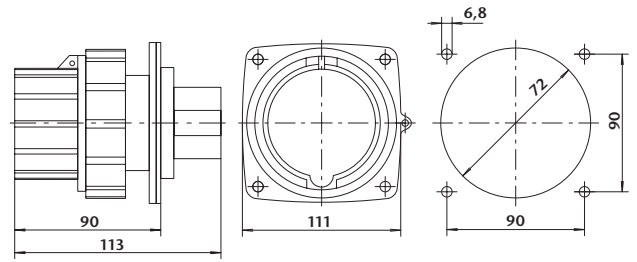
IRGN 125 xx have a pilot contact.

55 IRGR / 16A, 32A

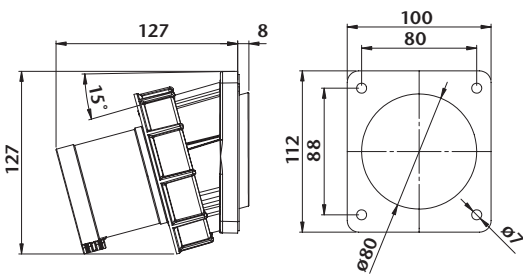


Type / mm	A	B	C	ød1	øD	øD1	E	F	J
IRGR 1653	80,5	85	75	4	87	65	64	73	59
IRGR 3253	96	95	80	4	100	71	70	84	72

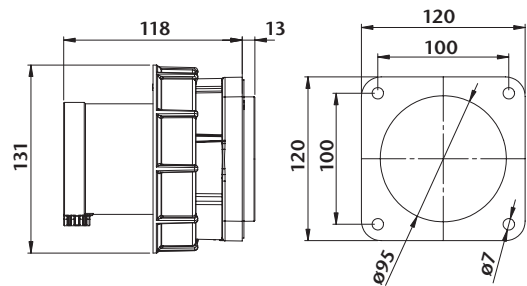
56 IRG / 63A



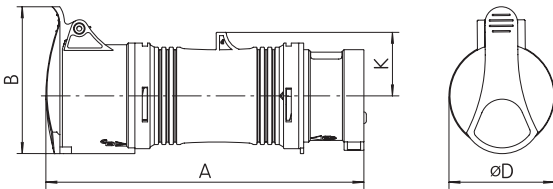
57 IRGN1 / 63A



58 IRGN / 125A

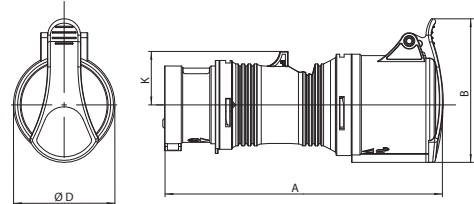


59 Adapter A 5p/4p



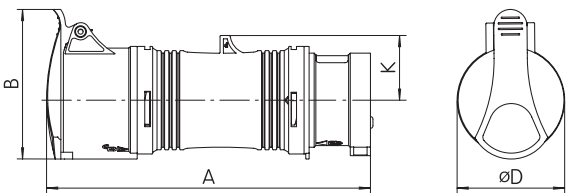
Type / mm	A	B	øD	K
A 1653/43	180	82	64	39
A 3253/43	235	96	73	45

60 Adapter A 16-32/x



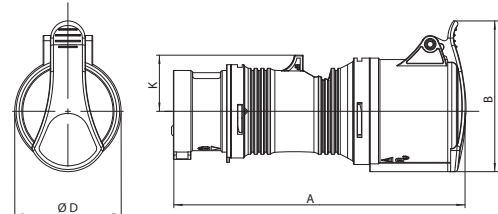
Type / mm	A	B	øD	K
A 16-32/4	198	96	65	34
A 16-32/5	200	103	73	37

61 Reversing adapter RA



Type / mm	A	B	øD	K
RA 1643	178	82	56	35
RA 1653	180	89	64	39
RA 3243	235	96	65	41
RA 3253	237	104	73	45

62 Adapter with a phase changer



Type / mm	A	B	øD	K
A 1653/43-0	180	82	64	39
A 3253/43-0	235	96	73	45
A 16-32/5-0	200	103	73	37

Note: Pin position can be changed by turning the screwdriver in 180 degrees and achieved the phase change.