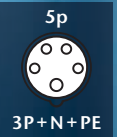
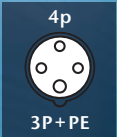
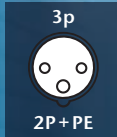


Wall inlets



230V
50-60Hz
3p = 6h

400V
50-60Hz
4p, 5p = 6h

500V
50-60Hz
4p, 5p = 7h

Current	Voltage	Poles	Degree of protection	Hour angle	Type	Packing pcs	Weight g/pc	Dimensions page/pic.
---------	---------	-------	----------------------	------------	------	-------------	-------------	----------------------

16 A	230 V	3	IP 67	6 h	CPG 1632	12	261	25/44
32 A	230 V	3	IP 67	6 h	CPG 3232	12	424	25/44



CPG 1632

63 A	400 V	4	IP 67	6 h	IPG 6343	8	849	25/45
63 A	500 V	4	IP 67	7 h	IPG 6345	8	850	25/45
63 A	400 V	5	IP 67	6 h	IPGN 6353	4	1017	25/46



IPGN 6353

125 A	230 V	3	IP 67	6 h	IPGN 12532	1	1760	26/47
125 A	400 V	4	IP 67	6 h	IPGN 12543	1	1800	26/47
125 A	500 V	4	IP 67	7 h	IPGN 12545	1	1800	26/47
125 A	400 V	5	IP 67	6 h	IPGN 12553	1	1840	26/47
125 A	500 V	5	IP 67	7 h	IPGN 12555	1	1840	26/47

IPGN 125 xx have a pilot contact.



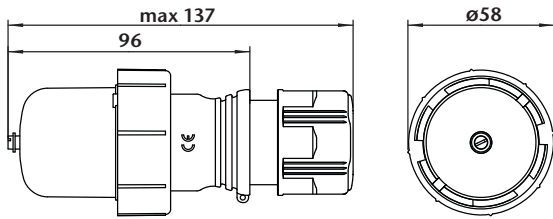
IPGN 12553

16 A	400 V	5	IP 44	6 h	VPS 1653	8	587	26/48
32 A	400 V	5	IP 44	6 h	VPS 3253	8	852	26/48

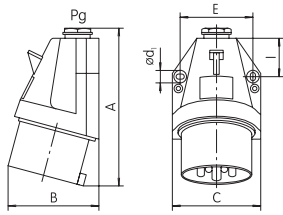
Possibility to lock in position 0 or I.



VPS 1653

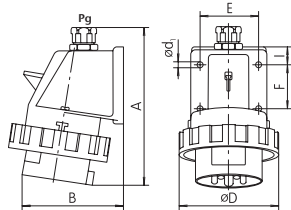


41 IP / 16A, 32A



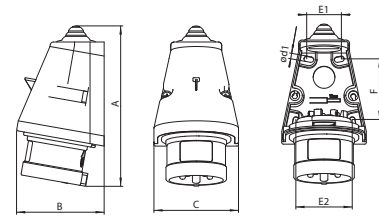
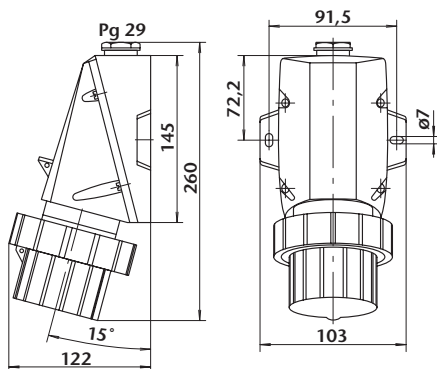
Type / mm	A	B	C	ød1	E	I	Gland
IP 1645	126	90,5	75	5,2	60	29,5	Pg 16
IP 3245	147	105	82	5,2	67	34	Pg 21

43 IPG / 16A, 32A



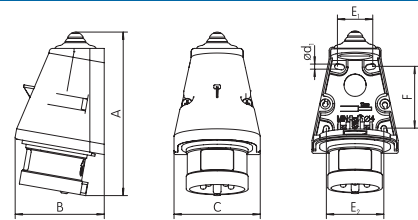
Type / mm	A	B	ød1	øD	E	F	I	Gland
IPG 1632	140	74	4,8	70	45	30	15	Pg 16
IPG 1643	143	83	5,2	78	50	30	17,5	Pg 16
IPG 1653	143	85	5,2	87	50	30	17,8	Pg 16
IPG 3232	172	95	5,2	92,5	58	40	20	Pg 21
IPG 3243	172	98	5,2	92,5	58	40	20	Pg 21
IPG 3253	172	101	5,2	100	58	40	20	Pg 21

45 IPG / 63A



Type / mm	A	B	C	ød1	E1	E2	F
IPN 1632	147	81	78	5	30	53	58
IPN 1643	146	81	78	5	30	53	58
IPN, IPB 1653	146	81	78	5	30	53	58
IPN 3232	168	95	88	5	35	61	60
IPN 3243	168	95	88	5	35	61	60
IPN 3253	169	94	89	5	40	62	63
IPB 3253	169	94	89	5	40	62	63

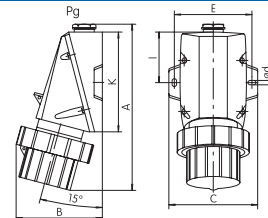
42 IPNO / 16A, 32A



Type / mm	A	B	C	ød1	E1	E2	F
IPNO 1653	146	81	78	5	30	53	58
IPNO 3253	169	94	89	5	40	62	63

Note: Pin position can be changed by turning the screwdriver in 180 degrees and achieved the phase change.

44 CPG / 16A, 32A



Type / mm	A	B	C	ød1	E	I	K	Gland
CPG 1632	170	83	86	4,8	74	50,7	101,4	Pg 16
CPG 3232	204	102	93,5	5,8	81	60,5	121	Pg 21

46 IPGN / 63A

