

## 40 CDKE - GERMAN STANDARD SURFACE-MOUNTING ENCLOSURES AND BOARDS

### ENCLOSURES WITH SMOKED TRANSPARENT DOOR - IP65



GW 40 101

#### ENCLOSURES AND DISTRIBUTION BOARDS FITTED WITH BIPOLAR 125 A TERMINAL BLOCKS

Code	No. of modules EN 50022	Outer dim. LxHxD (mm)	Pole 1 (mm <sup>2</sup> )	Pole 2 (mm <sup>2</sup> )	Pack Carton
GW 40 112	8	215x210x100	N (1x25) + (7x10)	E (1x25) + (7x10)	1/12
GW 40 116	18	410x285x140	N (5x25) + (14x10)	E (5x25) + (14x10)	1/3



GW 40 119

#### ENCLOSURES AND DISTRIBUTION BOARDS FITTED WITH BIPOLAR 125 A TERMINAL BLOCKS

Code	No. of modules EN 50022	Outer dim. LxHxD (mm)	Pole 1 (mm <sup>2</sup> )	Pole 2 (mm <sup>2</sup> )	Pack Carton
GW 40 117	36 (18x2)	410x463x140	N (10x25)+(28x10)	E (10x25)+(28x10)	1/2
GW 40 118	54 (18x3)	410x655x140	N (10x25)+(28x10)	E (10x25)+(28x10)	1
GW 40 119	72 (18x4)	410x878x160	N (10x25)+(28x10)	E (10x25)+(28x10)	1

#### DISTRIBUTION BOARDS AND ENCLOSURES EQUIPPED WITH BIPOLAR 125 A TERMINAL BLOCKS AND TWO INTERCHANGEABLE FLANGES (2 FLANGES WITH KNOCKOUTS HOLE) - GREY RAL 7035

Code	No. of modules EN 50022	Outer dim. LxHxD (mm)	Pole 1 (mm <sup>2</sup> )	Pole 2 (mm <sup>2</sup> )	Pack Carton
GW 40 113	12	298x260x140	N (3x35) + (10x10)	E (3x35) + (10x10)	6
GW 40 114	24 (12X2)	298x420x140	N (3x35) + (10x10)	E (3x35) + (10x10)	3
GW 40 115	36 (12x3)	298x570x140	N (6x35)+(20x10)	E (6x35)+(20x10)	2

**CHARACTERISTICS:** the flanges with knockout holes have the following inputs: 4xM16; 4xM20; 3xM25; 1xM32; Glow Wire Test: 750°C

**ACCESSORIES SUPPLIED:** terminal block, screwcaps and module masks for double insulation, circuit labels.

To restore the double insulation, use the relative accessories (module masks, screwcaps or wall mounting brackets).



GW 40 113

#### DISTRIBUTION BOARDS AND ENCLOSURES EQUIPPED WITH BIPOLAR 125 A TERMINAL BLOCKS AND TWO INTERCHANGEABLE FLANGES (1 FLANGE WITH KNOCKOUTS HOLE + 1 FLANGE WITH QUICK ENTRY CABLE GLANDS) - GREY RAL 7035

Code	No. of modules EN 50022	Outer dim. LxHxD (mm)	Pole 1 (mm <sup>2</sup> )	Pole 2 (mm <sup>2</sup> )	Pack Carton
GW 40 123	12	298x260x140	N (3x35) + (10x10)	E (3x35) + (10x10)	6
GW 40 124	24 (12X2)	298x420x140	N (3x35) + (10x10)	E (3x35) + (10x10)	3
GW 40 125	36 (12x3)	298x570x140	N (6x35)+(20x10)	E (6x35)+(20x10)	2

**CHARACTERISTICS:** the flanges with knockout holes have the following inputs: 4xM16; 4xM20; 3xM25; 1xM32; Glow Wire Test: 750°C

**ACCESSORIES SUPPLIED:** terminal block, screwcaps and module masks for double insulation, circuit labels.

To restore the double insulation, use the relative accessories (module masks, screwcaps or wall mounting brackets).



GW 40 124

**40 CDe - SURFACE-MOUNTING ENCLOSURES AND BOARDS - GERMAN STANDARD**

**TECHNICAL CHARACTERISTICS**

Standards: IEC EN 60670-1 (CEI 23-48); IEC EN 60670-24 (CEI 23-49) (*); DIN VDE 0603-1	Material: technopolymer GW PLAST
Degree of protection: IP 65	Impact resistance: IK 07
Protection against indirect contacts: double insulation - □ (◊)	Heat resistance: thermo-pressure with ball 70°C
Installation temperature: max. +60°C, min. -25°C	Resistance to abnormal heat and fire: Glow wire test 750°C

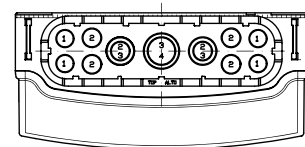
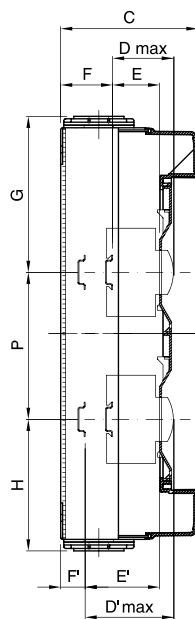
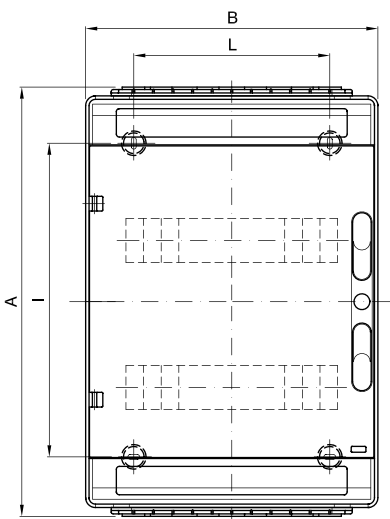
(◊) Complete double insulation, in accordance with EN 61140 Standard, obtainable with screwcaps (GW 44 622 or GW 44 623) or resin fixing brackets (GW 44 621).  
 (\*) Enclosure type: GP (CEI 23-51) and PD

**BEHAVIOUR WITH CHEMICAL AND ATMOSPHERIC AGENTS**

Saline solution	Acids		Bases		Solvents				Mineral oil	UV rays
	Concentrated	Diluted	Concentrated	Diluted	Hexane	Benzol	Acetone	Ethyl alcohol		
Resistant	Not resistant	Limited resistance	Limited resistance	Not resistant	Limited resistance	Not resistant	Not resistant	Limited resistance	Limited resistance	Resistant

**Dimension tables**

**ENCLOSURES WITH SMOKED TRANSPARENT DOOR - IP65**



Diameter of flange ducts			
1	2	3	4
M16	M20	M25	M32

	Code	Dimensions			Modular assembly							Fixing				
		A	B	C	B	E	F	G	H	P	D'max	E'	F'	NR	I	L
12M	GW 40 113 GW 40 123	278						126.5	151.5	/					161	
24M	GW 40 114 GW 40 124	438	298	140	75	48	48	156.5	131.5	150	102	75	21	4	320	200
36M	GW 40 115 GW 40 125	588						156.5	131.5	150					494	