

40 CD - PROTECTED DECORATIVE ENCLOSURES - IP40



**IK
08**

**IP
40**

**GWT
650°C**



SMOKED TRANSPARENT DOOR - SMOOTH WALLS



GW 40 043

ENCLOSURES PREDISPOSED FOR TERMINAL BLOCK - WHITE RAL 9016



Code	No. of modules EN 50022	Outer dim. LxHxD (mm)	Dispersible power (W)	Pack Carton
GW 40 043	8	200x180x100	15	14
GW 40 045	12	280x225x100	22	9
GW 40 047	24 (12X2)	280x350x100	25	6
GW 40 049	36 (18x2)	400x400x130	45	2
GW 40 051	54 (18x3)	400x550x130	63	2
GW 40 053	72 (18x4)	400x850x150	75	1

ACCESSORIES SUPPLIED: module masks, circuit labels. Self-adhesive label to be filled out for certification according to standard CEI 23-51.

GW40049, GW40051, GW40053, fitted with removable frame, to carry out the wiring operations outside the enclosure.

NOTES: Dispersible power calculated according to CEI 23-49. For the perforations, use the GW52401 milling cutter.

To restore the double insulation, use the relative accessories supplied (module masks and screwcaps or brackets for surface-mounting).

CHARACTERISTICS: Thermo-pressure with ball equal to 70°C.

INSTALLATION: for the possible enclosure-terminal block combinations, refer to the summary "COMPATIBILITY OF SURFACE-MOUNTING ENCLOSURES WITH BIPOLAR AND UNIPOLAR TERMINAL BLOCKS" in the selection guides of 40CD range.



GW 40 043 BS

ENCLOSURES EQUIPPED WITH 80 A IP20 BIPOLAR SCREW TERMINAL BLOCKS - WHITE RAL 9016

Code	No. of modules EN 50022	Outer dim. LxHxD (mm)	Dispersible power (W)	Pole 1 (mm ²)	Pole 2 (mm ²)	Pack Carton
GW 40 043 BS	8	200x180x100	15	N/E (2x16) + (7x10)	N/E (2x16) + (7x10)	14
GW 40 045 BS	12	280x225x100	22	N/E (3x16) + (11x10)	N/E (3x16) + (11x10)	9
GW 40 047 BS	24 (12X2)	280x350x100	25	N/E (3x16) + (11x10)	N/E (3x16) + (11x10)	6
GW 40 047 BD	24 (12X2)	280x350x100	25	N/E 2x[(3x16) + (11x10)]	N/E 2x[(3x16) + (11x10)]	6
GW 40 049 BS	36 (18x2)	400x400x130	45	N/E (3x16) + (17x10)	N/E (3x16) + (17x10)	2
GW 40 049 BD	36 (18x2)	400x400x130	45	N/E 2x[(3x16) + (17x10)]	N/E 2x[(3x16) + (17x10)]	2
GW 40 051 BD	54 (18x3)	400x550x130	63	N/E 2x[(3x16) + (17x10)]	N/E 2x[(3x16) + (17x10)]	2
GW 40 053 BD	72 (18x4)	400x850x150	75	N/E 2x[(3x16) + (17x10)]	N/E 2x[(3x16) + (17x10)]	1
GW 40 053 BQ	72 (18x4)	400x850x150	75	N/E 4x[(3x16) + (17x10)]	N/E 4x[(3x16) + (17x10)]	1

ACCESSORIES SUPPLIED: module masks, circuit labels. Self-adhesive label to be filled out for certification according to standard CEI 23-51. GW40049BS, GW40049BD, GW40051BD, GW40053BD, GW40053BQ, fitted with removable frame, to carry out the wiring operations outside the enclosure. Insulated bipolar screw 80A - IP20 terminal blocks to be installed on the frame before wiring.

NOTES: Dispersible power calculated according to CEI 23-49. For the perforations, use the GW52401 milling cutter. To restore the double insulation, use the relative accessories supplied (module masks and screwcaps or brackets for surface-mounting).

CHARACTERISTICS: thermo-pressure with ball equal to 70°C.

BLANK DOOR - SMOOTH WALLS



GW 40 067

ENCLOSURES PREDISPOSED FOR TERMINAL BLOCK - WHITE RAL 9016



Code	No. of modules EN 50022	Outer dim. LxHxD (mm)	Dispersible power (W)	Pack Carton
GW 40 063	8	200x180x100	15	14
GW 40 065	12	280x225x100	22	9
GW 40 067	24 (12X2)	280x350x100	25	6
GW 40 069	36 (18x2)	400x400x130	45	2
GW 40 071	54 (18x3)	400x550x130	63	2
GW 40 073	72 (18x4)	400x850x150	75	1

ACCESSORIES SUPPLIED: module masks, circuit labels. Self-adhesive label to be filled out for certification according to standard CEI 23-51. GW40069, GW40071, GW40073, fitted with removable frame, to carry out the wiring operations outside the enclosure.

NOTES: Dispersible power calculated according to CEI 23-49. For the perforations, use the GW52401 milling cutter. To restore the double insulation, use the relative accessories supplied (module masks and screwcaps or brackets for surface-mounting).

CHARACTERISTICS: thermo-pressure with ball equal to 70°C.

INSTALLATION: for the possible enclosure-terminal block combinations, refer to the summary "COMPATIBILITY OF SURFACE-MOUNTING ENCLOSURES WITH BIPOLAR AND UNIPOLAR TERMINAL BLOCKS" in the selection guides of 40CD range.

40 CD

40 CD - PROTECTED DECORATIVE ENCLOSURES - IP40

TECHNICAL CHARACTERISTICS

Standard: IEC EN 606070-1 (CEI 23-48); IEC EN 60670-24 (CEI 23-49) (*).

Suitable for assemblies in compliance with IEC EN 61439-1 and IEC EN 61439-3

Degree of protection: IP40

Protection against indirect contact: double insulation -  (*)

Installation temperature: max. +60°C; min. -25°C

Rated voltage: 400V

Rated insulation voltage: 750V

Rated current: 125A

Material: technopolymer GW PLAST.

Enclosures predisposed for terminal blocks: halogen-free in accordance with EN 60754-2 (CEI EN 50267-2-2).

Impact resistance: IK 08

Heat resistance: thermo-pressure with ball 70°C

Resistance to abnormal heat and fire: Glow wire test 650°C

Application: Indoor

(*) Complete insulation in accordance with EN 61140 Standard, obtainable with screwcaps (GW 44 623) or resin fixing brackets (GW 44 621).

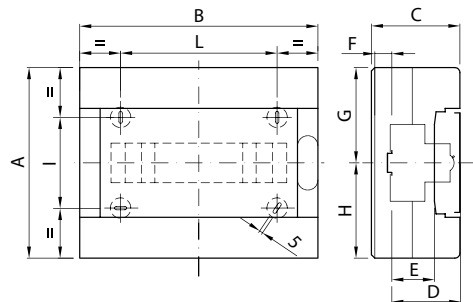
(*) Enclosure type: GP (CEI 23-51) and PD

BEHAVIOUR WITH CHEMICAL AND ATMOSPHERIC AGENTS

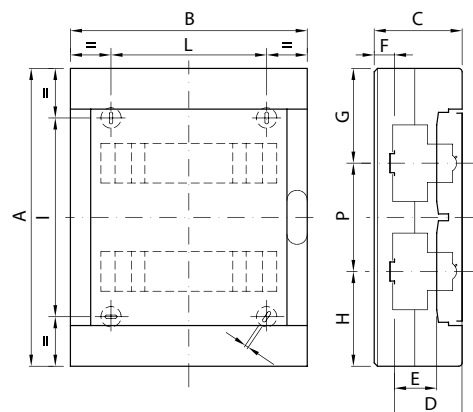
Saline solution	Acids		Bases		Solvents				Mineral oil	UV rays
	Concentrated	Diluted	Concentrated	Diluted	Hexane	Benzol	Acetone	Ethyl alcohol		
Resistant	Not resistant	Limited resistance	Not resistant	Limited resistance	Limited resistance	Not resistant	Not resistant	Limited resistance	Limited resistance	Limited resistance

Dimension tables

ENCLOSURES



Code	Overall dimensions			Modular assembly					Fixing		
	A	B	C	D	E	F	G	H	NR	I	L
8M GW 40 043 GW 40 043 BS GW 40 063 GW 40 063 BS	180	200	100	77	47	11.5	90	90	3	82	100
12M GW 40 045 GW 40 045 BS GW 40 065 GW 40 065 BS	225	280	100	77	47	11.5	112.5	112.5	4	107	180



Code	Overall dimensions			Modular assembly								Fixing			
	A	B	C	D	E	F	G	H	P	D'	E'	F'	NR	I	L
24M GW 40 047 GW 40 047 BS GW 40 047 BD GW 40 067 GW 40 067 BS GW 40 067 BD	350	280	100	77	47	11.5	112.5	112.5	125	-	-	-	4	232	180
36M GW 40 049 GW 40 049 BS GW 40 049 BD GW 40 069 GW 40 069 BS GW 40 069 BD	400	400	130	76	48	37	125	125	150	102.5	74	10.5	4	282	300
54M GW 40 051 GW 40 051 BD GW 40 071 GW 40 071 BD	550	400	130	76	48	37	125	125	150	102.5	74	10.5	4	432	300
72M GW 40 053 GW 40 053 BD GW 40 053 BQ GW 40 073 GW 40 073 BD GW 40 073 BQ	850	400	150	76	48	57	187.5	187.5	150 175	102.5	74	30.5	6	303 303	300