

COMPANY SOLAR UP&DOWN DOWNLIGHT IN-GROUND BRICKLIGHT FLOODLIGHT BOLLARD BULKHEAD GARDEN URBAN CLASSIC URBAN MODERN POST LAMPS REFERENCES

ECOVIVI 400 GX53 LED

LARGE SIZE



Modern luminaries made of shockproof resin material, UV-rays stabilized, rust and corrosion-free. Suitable for post top, wall and hanging installation. Supplied with flat diffuser granting no upward light emission. Equipped with TÜV-CB certified, long-life, efficient and **Kelvin settable GX53 LED modular system**. Designed according to the international regulations against light pollution (standard UNI 10819 – Installation area: Zone 1). Insulation class II, Protection rating IP55.

Diffusore moderno realizzato in resina antiurto, stabilizzato ai raggi UV, inattaccabile da ruggine e corrosione. Idoneo per il montaggio a palo, a sospensione o a parete. Fornito con diffusore piatto per garantire assenza di emissioni di luce verso l'alto.

Provvisto di sistema modulare a LED GX53 con Kelvin impostabile certificato TÜV-CB di lunga durata ed alta efficienza. Progettato in ottemperanza alle norme internazionali contro l'inquinamento luminoso (standard UNI 10819 – Area di installazione: Zona 1). Classe di isolamento II, grado di protezione IP55.



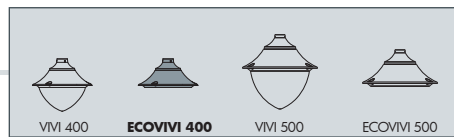
EV4.000.C6K

CCT SETTABLE

3000 K 4000 K 6500 K

SDCM <6





ECOVIVI 400 GX53 LED - COMPONENTS

IP55



ROOF made of shockproof resin material one piece only, UV-rays stabilized, rust and corrosion-free.

TETTO in un unico pezzo, realizzato in resina antiurto, stabilizzata ai raggi UV, inattaccabile da ruggine e corrosione.



DIFFUSER with flat shape to avoid the skyward dispersion of the luminous flux, according to the international regulations against light pollution and in particular the standard UNI 108119. Made of UV-rays stabilized polycarbonate (PC).

DIFFUSORE con configurazione piatta per evitare la dispersione verso il cielo del flusso luminoso, in ottemperanza alle norme internazionali sull'inquinamento luminoso ed in particolare la norma UNI 10819. Realizzato in policarbonato (PC) stabilizzato ai raggi UV.



Decorative connection **RING** to be fixed on the luminaries diffuser.



ANELLO decorativo di connessione da fissare sul diffusore dell'apparecchio.

ECOVIVI 400 GX53 LED

EV4.000 *



Dimensions and weight

Height: 243 mm
Diameter: 480 mm
Weight: 4,6 Kg
Junction to support: diameter 60 mm
Area expose to wind pressure:
CxS = m² 0,1449

Moulded colours:

Black White Grey

Diffuser PC (UV treated):

Clear

GX53 LED



- **COST SAVING:** long-life and efficient LED light sources.
- **BUILT-IN DRIVER:** quick and easy lamp replacement.
- **GREAT FLEXIBILITY:** GX53 standard lamp holder.
- **FUTURE-PROOFED LUMINARIES:** performances easy to upgrade to latest technology developments.
- **SUITABLE FOR OUTDOOR USE:** built-in driver fully protected against heat and humidity by silicone paste.

100 - 240 V

Luminaries supplied with white resin CEILING provided with 6x TÜV-CB certified, long-life, efficient and Kelvin settable GX53 LED lamps included. Each lamp can be quickly and easily replaced individually, making the luminaries maintenance very simple.

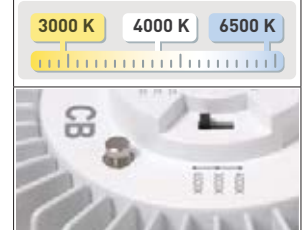
LAMP	POWER	LUMINOUS FLUX (Φ TOTAL) UP TO	COLOUR TEMP.	*ADD. SUFFIX
	6x 10W 60W	7740 lm	6500 K	.D6K
			4000 K	
			3000 K	

LED LAMPS



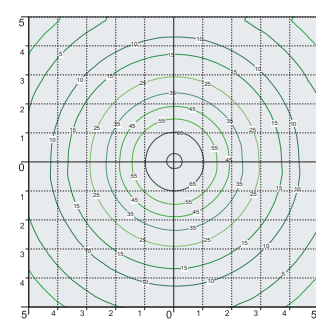
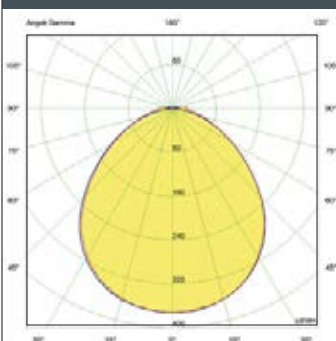
Comply with: EU2019/2015
EU2019/2020
Technical details on page 596.

CCT SETTABLE LED LAMP



CCT switch settable in three different positions, to select the desired Kelvin temperature (3000K/4000K/6500K) and get a customized ambiance.

PHOTOMETRIC DATA SAMPLE



ECOVIVI 400 GX53 LED
6X10W

POST height 3,5mt
10x10mt area: average 37 lux

The photometric data for all the versions are available upon request or on our website.

* ADD THESE SUFFIXES TO THE REFERENCES MENTIONED IN THE CATALOGUE

COMPANY SOLAR UP&DOWN DOWNLIGHT IN-GROUND BRICKLIGHT FLOODLIGHT BOLLARD BULKHEAD GARDEN URBAN CLASSIC URBAN MODERN POST LAMPS REFERENCES

ECOVIVI 400 E27

LARGE SIZE



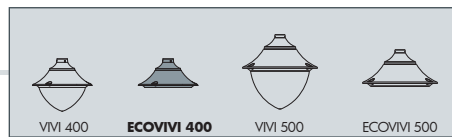
Modern luminaries made of shockproof resin material, UV-rays stabilized, rust and corrosion-free. Suitable for post top, wall and hanging installation. Supplied with flat diffuser granting no upward light emission. Provided with high temperature resistant ceiling suitable for horizontal bulb fixation and with aluminum reflector to optimize the light distribution. Designed according to the international regulations against light pollution (standard UNI 10819 - Installation area: Zone 1). Insulation class II, Protection rating IP55.

Diffusore moderno realizzato in resina antiurto, stabilizzato ai raggi UV, inattaccabile da ruggine e corrosione. Idoneo per il montaggio a palo, a sospensione o a parete. Fornito con diffusore piatto per garantire assenza di emissioni di luce verso l'alto. Provvisto di soffitto ad alta resistenza al calore idoneo per il fissaggio orizzontale della lampadina e completo di parabola riflettente in alluminio per dirigere il flusso luminoso. Progettato in ottemperanza alle norme internazionali contro l'inquinamento luminoso (standard UNI 10819 - Area di installazione: Zona 1). Classe di isolamento II, grado di protezione IP55.



EV4.000.E27





ECOVIVI 400 E27 - E40 - COMPONENTS

IP55



ROOF made of shockproof resin material, UV-rays stabilized, rust and corrosion-free.

TETTO realizzato in resina antiurto, stabilizzata ai raggi UV, inattaccabile da ruggine e corrosione.

High temperature resistant **CEILING** made of white polycarbonate (PC), UV-rays stabilized, suitable for ballast fixation on its upper side and provided with E27 or E40 lampholder on its lower side. Bulb in horizontal position.

SOFFITTO realizzato in policarbonato bianco (PC) ad alta resistenza al calore, stabilizzato ai raggi UV, nella cui parte superiore vengono fissati i reattori. Fornito completo di portalampada E27 o E40 atto a sostenere la lampadina in posizione orizzontale.

Parabolic **REFLECTOR** made of anodized aluminium, designed to optimize the light distribution and to limit the skyward dispersion of the luminous flux.

PARABOLA riflettente realizzata in alluminio anodizzato, progettata per ottimizzare la distribuzione del flusso luminoso e limitarne la dispersione verso il cielo.

DIFFUSER with flat shape to avoid the skyward dispersion of the luminous flux, according to the international regulations against light pollution and in particular the standard UNI 108119. Made of UV-rays stabilized polycarbonate (PC).

DIFFUSORE con configurazione piatta per evitare la dispersione verso il cielo del flusso luminoso, in ottemperanza alle norme internazionali sull'inquinamento luminoso ed in particolare la norma UNI 10819. Realizzato in policarbonato (PC) stabilizzato ai raggi UV.

Decorative connection **RING** to be fixed on the luminaries diffuser.

ANELLO decorativo di connessione da fissare sul diffusore dell'apparecchio.

ECOVIVI 400 E27

EV4.000 *



Dimensions and weight

Height: 243 mm
Diameter: 480 mm
Weight: 3,4 Kg
Junction to support: diameter 60 mm
Area expose to wind pressure:
CxS = m² 0,1449

Moulded colours:

Black White Grey

Diffuser PC (UV treated):

Clear

E27-E40

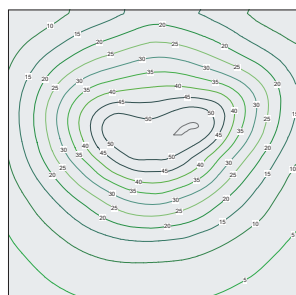
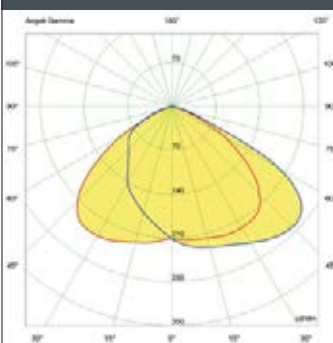
*ADD. SUFFIX



Luminaries supplied with E27 or E40 lampholder.

suitable lamps: CFL-LED SON-HQI max 100W	E27 Lampholder only	.E27
	E40 Lampholder only	.E40

PHOTOMETRIC DATA SAMPLE



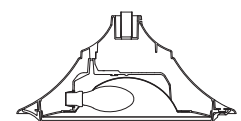
ECOVIVI 400 E27
HQI 70W

POST height 3,5mt
10x10mt area: average 28 lux

The photometric data for all the versions are available upon request or on our website.

HORIZONTAL BULB

AGAINST LIGHT POLLUTION



E27 - E40 VERSION

* ADD THESE SUFFIXES TO THE REFERENCES MENTIONED IN THE CATALOGUE

ECOVIVI 400

LARGE SIZE



EV4.254.C6K

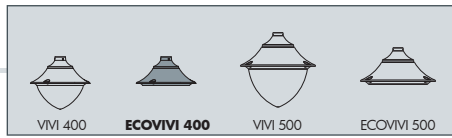


EV4.364.A20.D6K



EV4.421.A30.D6K

MADE IN ITALY



EKTOR 2500 MIDIPILAR/ECOVIVI400 3L
EV4.361.A30

Pcs 1
Kg 41
mc 0,497

1120

2755

EKTOR 2500 MIDIPILAR/ECOVIVI400 2L
EV4.361.A20

Pcs 1
Kg 35,7
mc 0,306

1220

2755

Ø 265

EKTOR 4000 MIDIPILAR/ECOVIVI400 2L	AKILLE 4000 MIDIPILAR/ECOVIVI400 2L
EV4.371.A20	EV4.421.A20
Pcs 1 Kg 46 mc 0,385	
EKTOR 3500 MIDIPILAR/ECOVIVI400 2L	AKILLE 3500 MIDIPILAR/ECOVIVI400 2L
EV4.367.A20	EV4.417.A20
Pcs 1 Kg 42,5 mc 0,358	
EKTOR 3000 MIDIPILAR/ECOVIVI400 2L	AKILLE 3000 MIDIPILAR/ECOVIVI400 2L
EV4.364.A20	EV4.414.A20
Pcs 1 Kg 39,1 mc 0,332	

1220

4255
3755
3255

EKTOR3000 AKILLE4000

EKTOR 4000 MIDIPILAR/ECOVIVI400 3L	AKILLE 4000 MIDIPILAR/ECOVIVI400 3L
EV4.371.A30	EV4.421.A30
Pcs 1 Kg 51,1 mc 0,576	
EKTOR 3500 MIDIPILAR/ECOVIVI400 3L	AKILLE 3500 MIDIPILAR/ECOVIVI400 3L
EV4.367.A30	EV4.417.A30
Pcs 1 Kg 47,7 mc 0,55	
EKTOR 3000 MIDIPILAR/ECOVIVI400 3L	AKILLE 3000 MIDIPILAR/ECOVIVI400 3L
EV4.364.A30	EV4.414.A30
Pcs 1 Kg 44,3 mc 0,523	

1120

4255
3755
3255

EKTOR4000 AKILLE3000

Ø 265