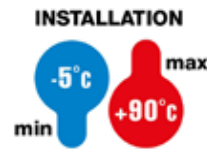


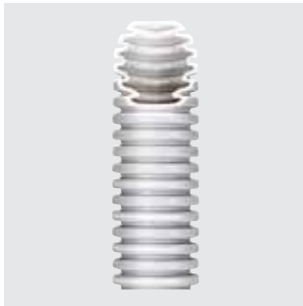
**PLIABLE CONDUIT ICTA**

**CLASSIFICATION**  
**34223**  
 EN 50086  
 EN 61386



**GWT**  
**850°C**

**ICTA - "LOW SMOKE ZERO HALOGEN" MEDIUM PLIABLE CONDUIT**



DX 20 016

**MEDIUM PLIABLE CONDUIT, GREY RAL 7035, SELF-EXTINGUISHING AND SELF-RECOVERING - PP**



Code	Conduits Ø (mm)	Pack Carton
<b>Type: without cable puller</b>		
DX 20 016	16	100/4800
DX 20 020	20	100/4000
DX 20 025	25	50/2000
DX 20 032	32	25/1100
DX 20 040	40	25/500
DX 20 050	50	25/400
DX 20 063	63	20/240
<b>Type: with cable puller</b>		
DX 20 116	16	100/4800
DX 20 120	20	100/4000
DX 20 125	25	50/2000
DX 20 132	32	25/1100
DX 20 140	40	25/500
DX 20 150	50	25/400
DX 20 163	63	20/240

**USE:** the cable puller-feeder allows the wires to be pulled easily. Conformity to standards refers to the protective conduit and not to the cable puller-feeder. Do not expose the conduits to direct solar irradiation for long periods.



DX 20 516

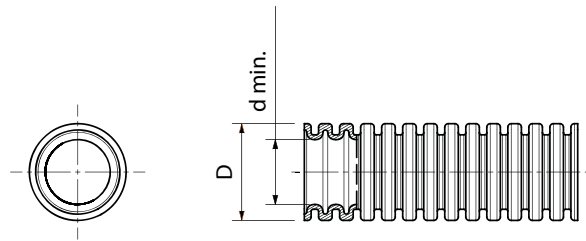
**MEDIUM PLIABLE CONDUIT, DARK GREY, SELF-EXTINGUISHING AND SELF-RECOVERING - PP**



Code	Conduits Ø (mm)	Pack Carton
<b>Type: without cable puller</b>		
DX 20 416	16	100/4800
DX 20 420	20	100/4000
DX 20 425	25	50/2000
DX 20 432	32	25/1100
DX 20 440	40	25/500
DX 20 450	50	25/400
DX 20 463	63	20/240
<b>Type: with cable puller</b>		
DX 20 516	16	100/4800
DX 20 520	20	100/4000
DX 20 525	25	50/2000
DX 20 532	32	25/1100
DX 20 540	40	25/500
DX 20 550	50	25/400
DX 20 563	63	20/240

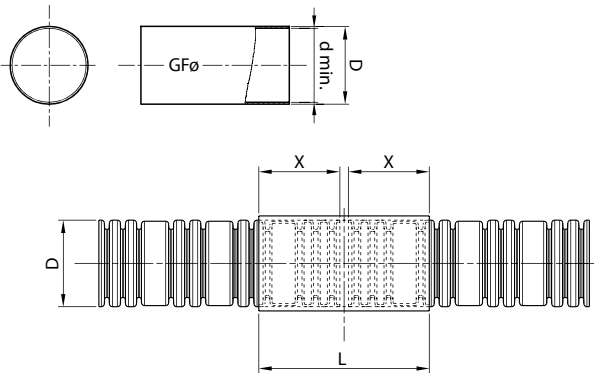
**USE:** the cable puller-feeder allows the wires to be pulled easily. Conformity to standards refers to the protective conduit and not to the cable puller-feeder. Do not expose the conduits to direct solar irradiation for long periods.

**ICTA - SELF-RECOVERING, SELF-EXTINGUISHING, HALOGEN-FREE MEDIUM PLIABLE CONDUIT**



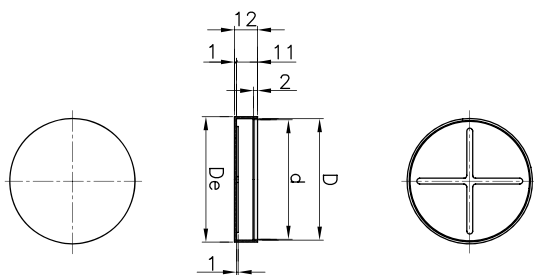
Grey RAL 7035		Dark grey		Green		Light blue		conduit Ø (mm)	D	d. min.
Without cable puller-feeder	With cable puller-feeder	Without cable puller-feeder	With cable puller-feeder	Without cable puller-feeder	With cable puller-feeder	Without cable puller-feeder	With cable puller-feeder			
Code	Code	Code	Code	Code	Code	Code	Code			
DX 20 016	DX 20 116	DX 20 416	DX 20 516	DX 22 016	DX 22 116	DX 23 016	DX 23 116	16	16	0 -0.3
DX 20 020	DX 20 120	DX 20 420	DX 20 520	DX 22 020	DX 22 120	DX 23 020	DX 23 120	20	20	0 -0.3
DX 20 025	DX 20 125	DX 20 425	DX 20 525	DX 22 025	DX 22 125	DX 23 025	DX 23 125	25	25	0 -0.4
DX 20 032	DX 20 132	DX 20 432	DX 20 532	DX 22 032	DX 22 132	DX 23 032	DX 23 132	32	32	0 -0.4
DX 20 040	DX 20 140	DX 20 440	DX 20 540	DX 22 040	DX 22 140	DX 23 040	DX 23 140	40	40	0 -0.4
DX 20 050	DX 20 150	DX 20 450	DX 20 550	DX 22 050	DX 22 150	DX 23 050	DX 23 150	50	50	0 -0.5
DX 20 063	DX 20 163	DX 20 463	DX 20 563	DX 22 063	DX 22 163	DX 23 063	DX 23 163	63	63	0 -0.6

**PLIABLE CONDUIT COUPLING - IP40**



Code	Ø conduits	D	d. min.	L	X
DX 52 016	16	17.9	15.9	60	16
DX 52 020	20	21.9	19.9		20
DX 52 025	25	26.8	24.8		25
DX 52 032	32	33.8	31.8	80	30
DX 52 040	40	41.8	39.8		32
DX 52 050	50	51.8	49.8		42
DX 52 063	63	64.7	62.7		50

**PLIABLE CONDUIT CAP**



Code	For conduits Ø (mm)	D	De	d.
DX 52 116	16	16	18	15
DX 52 120	20	20	22	19
DX 52 125	25	25	27	24
DX 52 132	32	32	34	31
DX 52 140	40	40	42	39
DX 52 150	50	50	52	49
DX 52 163	63	63	65	62