

DX 15 116

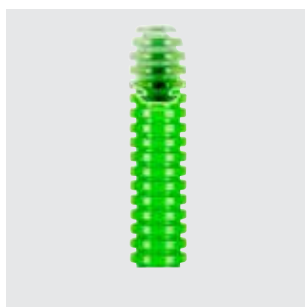
MEDIUM BLACK PLIABLE CONDUIT - PVC

Code	Conduits Ø (mm)	Pack Carton
Type: without cable puller		
DX 15 016	16	100/5600
DX 15 020	20	100/4800
DX 15 025	25	50/2400
DX 15 032	32	25/1300
DX 15 040	40	25/500
DX 15 050	50	25/400
DX 15 063	63	20/240
Type: with cable puller		
DX 15 116	16	100/5600
DX 15 120	20	100/4800
DX 15 125	25	50/2400
DX 15 132	32	25/1300
DX 15 140	40	25/500
DX 15 150	50	25/400
DX 15 163	63	20/240

USE: black is recommended for the identification of the distribution and force lines.

The cable puller-feeder allows the wires to be pulled easily.

Conformity to standards refers to the protective conduit and not to the cable puller-feeder. Do not expose the conduits to direct solar irradiation for long periods.



DX 15 216

MEDIUM GREEN PLIABLE CONDUIT - PVC

Code	Conduits Ø (mm)	Pack Carton
Type: without cable puller		
DX 15 216	16	100/2400
DX 15 220	20	100/2000
DX 15 225	25	50/1000
DX 15 232	32	25/600
DX 15 240	40	25/500
DX 15 250	50	25/400
Type: with cable puller		
DX 15 316	16	100/2400
DX 15 320	20	100/2000
DX 15 325	25	50/1000
DX 15 332	32	25/600

USE: the green colour is recommended for identifying the telephone lines, BUS lines and domestic automation lines.

The cable puller-feeder allows the wires to be pulled easily.

Conformity to standards refers to the protective conduit and not to the cable puller-feeder. Do not expose the conduits to direct solar irradiation for long periods.



DX 15 516

MEDIUM LIGHT BLUE PLIABLE CONDUIT - PVC

Code	Conduits Ø (mm)	Pack Carton
Type: without cable puller		
DX 15 416	16	100/2400
DX 15 420	20	100/2000
DX 15 425	25	50/1000
DX 15 432	32	25/600
DX 15 440	40	25/500
DX 15 450	50	25/400
Type: with cable puller		
DX 15 516	16	100/2400
DX 15 520	20	100/2000
DX 15 525	25	50/1000
DX 15 532	32	25/600

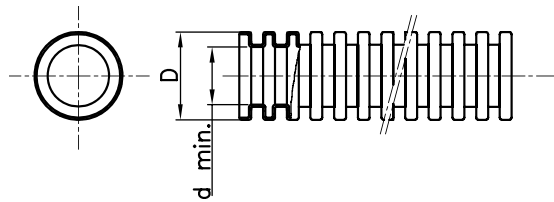
USE: light blue is recommended for the identification of the entryphone lines.

The cable puller-feeder allows the wires to be pulled easily.

Conformity to standards refers to the protective conduit and not to the cable puller-feeder. Do not expose the conduits to direct solar irradiation for long periods.

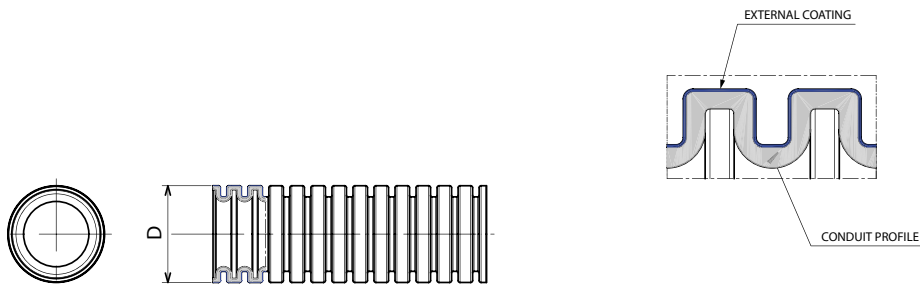
Dimension tables

FK 15 - ARCOBALENO MEDIUM PLIABLE CONDUIT



Natural white		Black		Green		Light blue		Brown		Lilac		conduit Ø (mm)	D	d. min.	
Without cable puller-feeder	With cable puller-feeder	Without cable puller-feeder	With cable puller-feeder	Without cable puller-feeder	With cable puller-feeder	Without cable puller-feeder	With cable puller-feeder	Without cable puller-feeder	With cable puller-feeder	Without cable puller-feeder	With cable puller-feeder				
Code	Code	Code	Code	Code	Code	Code	Code	Code	Code	Code	Code				
DX 16 216	DX 16 316	DX 15 016	DX 15 116	DX 15 216	DX 15 316	DX 15 416	DX 15 516	DX 15 616	DX 15 716	DX 15 816	DX 15 916	16	16	0 - 0.3	10.7
DX 16 220	DX 16 320	DX 15 020	DX 15 120	DX 15 220	DX 15 320	DX 15 420	DX 15 520	DX 15 620	DX 15 720	DX 15 820	DX 15 920	20	20	0 - 0.3	14.1
DX 16 225	DX 16 325	DX 15 025	DX 15 125	DX 15 225	DX 15 325	DX 15 425	DX 15 525	DX 15 625	DX 15 725	DX 15 825	DX 15 925	25	25	0 - 0.4	18.3
DX 16 232	DX 16 332	DX 15 032	DX 15 132	DX 15 232	DX 15 332	DX 15 432	DX 15 532	DX 15 632	DX 15 732	DX 15 832	DX 15 932	32	32	0 - 0.4	24.3
DX 16 240	DX 16 340	DX 15 040	DX 15 140	DX 15 240		DX 15 440		DX 15 640		DX 15 840		40	40	0 - 0.4	31.2
DX 16 250	DX 16 350	DX 15 050	DX 15 150	DX 15 250		DX 15 450		DX 15 650		DX 15 850		50	50	0 - 0.5	39.6
DX 16 263	DX 16 363	DX 15 063	DX 15 163									63	63	0 - 0.6	50.6

FKCO - COEXTRUDED SELF-EXTINGUISHING PLIABLE CONDUITS



Light grey	Black	Green	Light blue	Brown	Lilla	Ø conduit (mm)	D	
Code	Code	Code	Code	Code	Code			
DX 16 220 C	DX 15 020 C	DX 15 220 C	DX 15 420 C	DX 15 620 C	DX 15 820 C	20	20	0 - 0.3
DX 16 225 C	DX 15 025 C	DX 15 225 C	DX 15 425 C	DX 15 625 C	DX 15 825 C	25	25	0 - 0.4
DX 16 232 C	DX 15 032 C	DX 15 232 C	DX 15 432 C	DX 15 632 C	DX 15 832 C	32	32	0 - 0.4
DX 16 240 C	DX 15 040 C	DX 15 240 C	DX 15 440 C	DX 15 640 C	DX 15 840 C	40	40	0 - 0.4