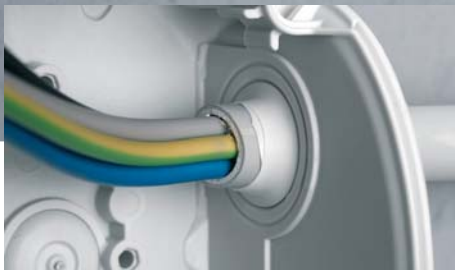


12 / 7



Reference table	
Present types	New types
D 9220	<b>DK 0200 R</b>
D 9225	<b>DK 0202 R</b> <b>DK 0402 R</b>
D 9240	<b>DK 0400 R</b>
D 9245	<b>DK 0404 R</b> <b>DK 0604 R</b>

### DK Cable junction boxes

for safety lighting circuits,  
for equipotential bonding conductors

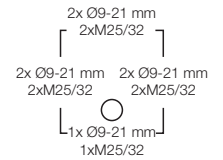
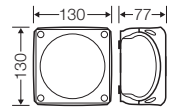
Cable entry via integrated elastic membranes or metric knockouts

- Cable junction box with red lid for safety lighting circuits
- With elastic membrane, which can be removed for cable entry via cable glands
- Multi-level knockouts for cable glands in different sizes
- Cable entry through the bottom of the box via integrated elastic membrane
- Closes quickly by a quarter turn - locked position well visible (open - locked)
- Lid fasteners sealable without accessories
- External brackets for wall fixing included
- Retaining strap, details see product description
- High-position terminals with more space for wiring
- All terminals with two clamping units per pole
- Every pole allows the connection of various conductor cross sections and conductor types
- Terminals prevent damage of conductors, also with flexible conductors without ferrule
- Different terminal positions and fastening options
- Material: polypropylene or polystyrene
- Burning behaviour: glow wire test in accordance with IEC 60695-2-11: 750 °C, flame-retardant, self-extinguishing
- Colour: grey RAL 7035, with red lid RAL 3000
- Terminal box for equipotential bonding cables

**DK Cable junction boxes****For safety lighting circuits****Cable entry via integrated elastic membranes or metric knockouts****DK 0604 R** NEW**1.5-4 mm<sup>2</sup>, Cu 3~**

- terminal with 2 clamping units per pole
- 5-pole per pole 8 x 1,5 mm<sup>2</sup> sol / f, 6 x 2,5 mm<sup>2</sup> sol / f, 4 x 4 mm<sup>2</sup> sol / f, 2 x 6 mm<sup>2</sup> sol / f
- with red lid RAL 3000
- for safety lighting circuits
- with elastic membranes, which can be removed for cable entry via cable glands, sealing range 9.0-21.0 mm
- with one cable entry in the bottom, sealing range Ø 9.0-20.0 mm
- lid fasteners sealable without accessories
- retaining strap and external brackets for wall fixing included

IP
66



rated insulation voltage	$U_i = 690 \text{ V a.c./d.c.}$
current carrying capacity	32 A
tightening torque for terminal	0.7 Nm
material	PP (polypropylene)