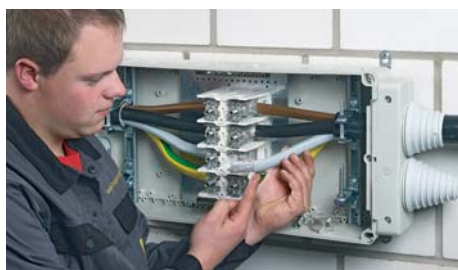
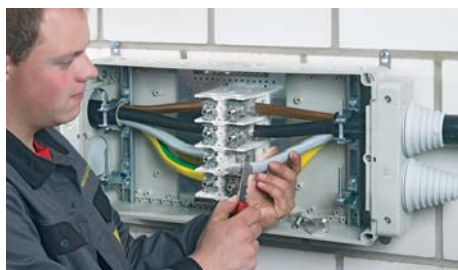


Reference table	
Present types	New types
D 9041	DK 0402 A
K 9061	DK 0604 A
K 9351	DK 2516 A
KF 9251	KF 3550 A
KF 9501	KF 5050 A



DK Cable junction boxes

**For normal environment and protected outdoor
With terminals for aluminum and copper conductors**

- Separate clamping units for aluminum and copper conductors
- Degree of protection IP 66, In the case of twisted cables IP 54 using cable glands
- Labelling system: label template in the Internet at www.hensel-electric.de - downloads
- Material: polypropylene or polycarbonate
- Burning behaviour:
Glow wire test in accordance with IEC 60695-2-11: 750 °C / 960 °C, flame-retardant, self-extinguishing
- Colour: grey, RAL 7035
- Before connecting, aluminum conductors must be pre-treated according to the appropriate technical recommendations, see technical information aluminum conductors

DK Cable junction boxes

With terminal blocks for aluminum and copper conductors

Cable entry via integrated elastic membranes or metric knockouts

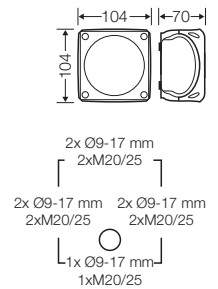


DK 0402 A NEW

1.5-2.5 mm², Cu/Alu 3~

- with terminals
- 5-pole per pole 4 x 1.5 mm² sol/f, 4 x 2.5 mm² sol/f, conductors are inserted into the screw-type terminal, terminal technology, see annex DK Cable junction boxes
- with elastic membranes, which can be removed for cable entry via cable glands, sealing range 9.0-17.0 mm
- to achieve the degree IP 54 with twisted cables, it is absolutely necessary to use cable glands
- with one cable entry in the bottom, sealing range Ø 6.0-15.0 mm
- lid fasteners sealable without accessories
- before connecting, aluminum conductors must be pre-treated according to the appropriate technical recommendations, see technical information aluminum conductors
- retaining strap and external brackets for wall fixing included

IP
66



rated insulation voltage	U _i = 250 V a.c./d.c.
current carrying capacity	20 A
tightening torque for terminal	0.5 Nm
material	PP (polypropylene)

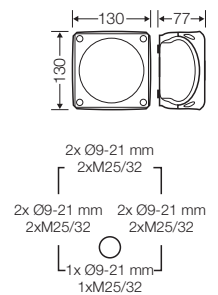


DK 0604 A NEW

1.5-4 mm², Cu/Alu 3~

- with terminals
- 5-pole per pole 4 x 1.5 mm² sol/f, 4 x 2.5 mm² sol/f, 4 x 4 mm² sol/f, conductors are inserted into the screw-type terminal, terminal technology, see annex DK Cable junction boxes
- with elastic membranes, which can be removed for cable entry via cable glands, sealing range 9.0-21.0 mm
- to achieve the degree IP 54 with twisted cables, it is absolutely necessary to use cable glands
- with one cable entry in the bottom, sealing range Ø 9.0-20.0 mm
- lid fasteners sealable without accessories
- before connecting, aluminum conductors must be pre-treated according to the appropriate technical recommendations, see technical information aluminum conductors
- retaining strap and external brackets for wall fixing included

IP
66



rated insulation voltage	U _i = 400 V a.c./d.c.
current carrying capacity	20 A
tightening torque for terminal	0.7 Nm
material	PP (polypropylene)