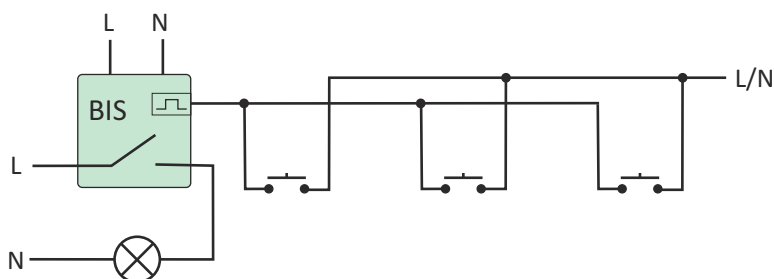


3. ELECTRONIC BISTABLE PULSE RELAYS

PURPOSE

Electronic bistable pulse relays enables the user to actuate lighting or other devices from various locations by means of control buttons in parallel connection.

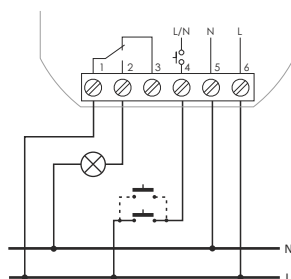


SWITCH ON - SWITCH OFF TYPE

The receiver is actuated by means of a current pulse triggered by pushing any bell push connected to the relay. The receiver is deactivated by another pulse or after a preset time.

The relay does not „memorize” the position of the relay contact, i.e. in case of supply voltage decay and the subsequent return of supply voltage, the relay contact will be set in the off position. Such a solution prevents the automatic actuation of the receivers controlled that might occur without proper supervision after a long-lasting decay of supply voltage.

BIS-402

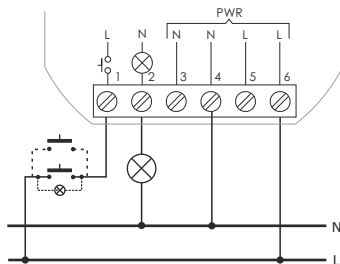


power supply	230V AC
contact / load current (AC-1)	1xNO/NC / <10A
L/N current control pulse	<1mA
switching ON delay	0.1±0.2sec
power consumption	0.4W
working temperature	-25÷50°C
terminal	2.5mm ² screw terminals
dimensions	Ø54 (□48×43mm), h=20mm
mounting	in flush mounted Ø60
protection level	IP20

ATTENTION!

The BIS-402 is not compatible with bell pushes equipped with fluorescent lamps.

BIS-408 / BIS-408i



power supply	100÷265V AC
BIS-408(i)	100÷265V AC
contact / load current (AC-1)	1xNO / <16A
BIS-408	1xNO / <16A
BIS-408i	1xNO / <16A (160A/20msec)
L current control pulse	<5mA
switching ON delay	0.1±0.2sec
power indication	green LED
power consumption	
standby	0.15W
on	0.7W
working temperature	-25÷50°C
terminal	2.5mm ² screw terminals
dimensions	Ø54 (□48×43mm), h=25mm
mounting	in flush mounted Ø60
protection level	IP20

ATTENTION!

Relay version "i" is to pin adapted to cooperate with the receivers with high starting current, such as LED fluorescent lamps, ESL fluorescent lamps, electronic transformers, discharge lamps, etc.

The BIS-408 and BIS-408i can be used with backlit buttons.