

230V
50-60Hz
3p = 6h

400V
50-60Hz
4p, 5p = 6h

500V
50-60Hz
4p, 5p = 7h



Current	Voltage	Poles	Degree of protection	Hour angle	Typee	Packing pcs	Weight g/pc	Dimensions page/pic.
---------	---------	-------	----------------------	------------	-------	-------------	-------------	----------------------



Adapter – change of 5P to 4P.

16 A	400 V	5/4	IP 44	6 h	A 1653/43	9	284	27/59
32 A	400 V	5/4	IP 44	6 h	A 3253/43	6	457	27/59

The use of the adapter A 5p/ 4p is determined by the symmetrical load since the 4-pole socket connection is 3P+PE.



Adapter – change 16A to 32A.

16 A/32A	400 V	4	IP 44	6 h	A 16-32/4	8	343	27/60
16 A/32A	400 V	5	IP 44	6 h	A 16-32/5	8	386	27/60



Adapter with a phase changer.

16 A	400 V	4	IP 44	6 h	RA 1643	9	296	27/61
16 A	400 V	5	IP 44	6 h	RA 1653	9	336	27/61
32 A	400 V	4	IP 44	6 h	RA 3243	6	450	27/61
32 A	400 V	5	IP 44	6 h	RA 3253	6	507	27/61



Adapter – change 16A/32A or 5 to 4P + possibility of changing the phases.

16A/32A	400 V	5	IP 44	6 h	A 16-32/5 -0	8	386	27/62
16 A	400 V	5/4	IP 44	6 h	A 1653/43-0	9	284	27/62
32 A	400 V	5/4	IP 44	6 h	A 3253/43-0	6	470	27/62

Pin position can be changed by turning the screwdriver in 180 degrees and achieved the phase change.

The use of the adapter A 5p/ 4p is determined by the symmetrical load since the 4-pole socket connection is 3P+PE.



SA-1

Adopting from industrial plug 3P/16A/ 230V to house socket 250V/16A, S – Schuko.

16A	230 V	3	IP 44	6 h	SA-1	4	219	28/63
16A	230 V	3	IP 44	6 h	SA-1S	4	219	28/63



SA-2

Adopting from industrial plug 5P/16A/ 400V to house socket 250V/16A, S – Schuko.

16A	400 V	5	IP 44	6 h	SA-2	4	243	28/63
16A	400 V	5	IP 44	6 h	SA-2S	4	243	28/63

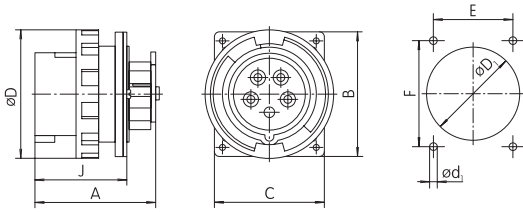


SA-3

Adopting from plug UNISCHUKO 250V/16A to industrial socket 3P/16A/230V respectively 3P/32A/230V.

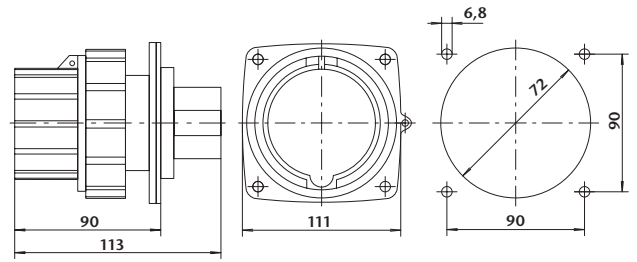
16 A	250 V	3	IP 44	6 h	SA-3	4	241	28/64
32 A	250 V	3	IP 44	6 h	SA-4	4	322	28/64

55 IRGR / 16A, 32A

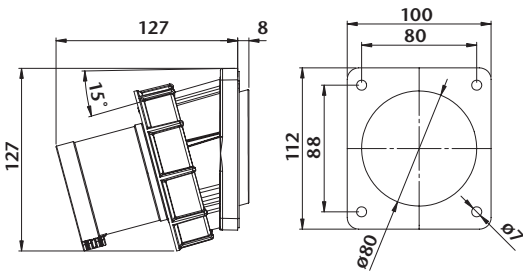


Type / mm	A	B	C	ød1	øD	øD1	E	F	J
IRGR 1653	80,5	85	75	4	87	65	64	73	59
IRGR 3253	96	95	80	4	100	71	70	84	72

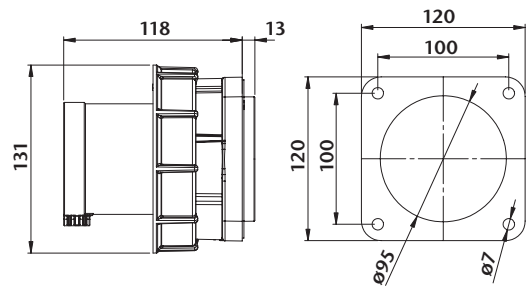
56 IRG / 63A



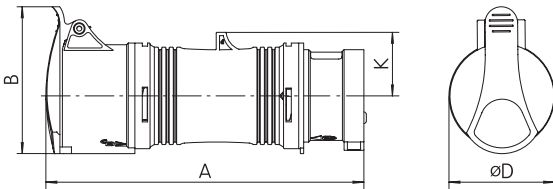
57 IRGN1 / 63A



58 IRGN / 125A

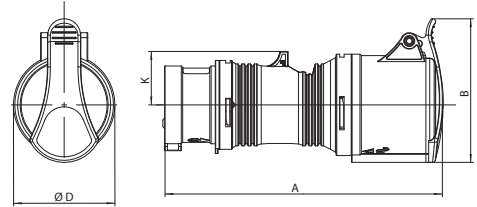


59 Adapter A 5p/4p



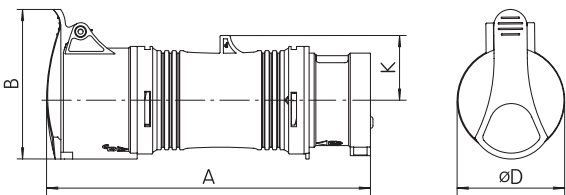
Type / mm	A	B	øD	K
A 1653/43	180	82	64	39
A 3253/43	235	96	73	45

60 Adapter A 16-32/x



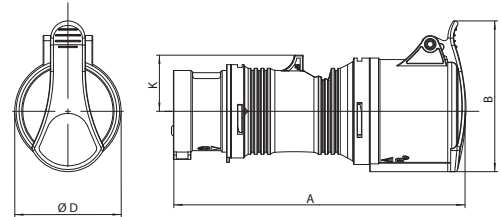
Type / mm	A	B	øD	K
A 16-32/4	198	96	65	34
A 16-32/5	200	103	73	37

61 Reversing adapter RA



Type / mm	A	B	øD	K
RA 1643	178	82	56	35
RA 1653	180	89	64	39
RA 3243	235	96	65	41
RA 3253	237	104	73	45

62 Adapter with a phase changer



Type / mm	A	B	øD	K
A 1653/43-0	180	82	64	39
A 3253/43-0	235	96	73	45
A 16-32/5-0	200	103	73	37

Note: Pin position can be changed by turning the screwdriver in 180 degrees and achieved the phase change.