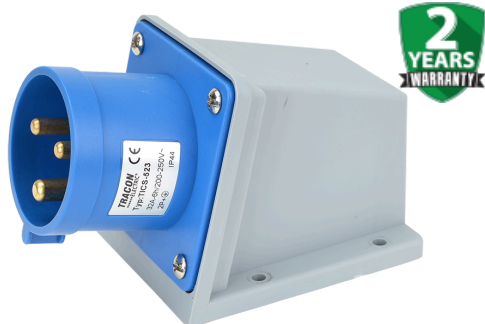




Fișă industrială aparentă



32A, 250V, 2P+E, 6h, IP44



- | | | | |
|------------------------------|-----------------------|---------------------------|------------------|
| • Amperaj IEC: | 32 A | • Grad de protecție (IP): | IP44 |
| • Voltaj conform RO 60309-2: | 230 V (50+60 Hz) blue | • Sistem de conectare: | Screwed terminal |
| • Pozitie ora: | 6 h | • Unghi de inserare: | Straight |
| • Identificare culori: | Blue | • Garanție: | 2 an |

TRACON	I_n Curent nominal (A)	U_n Tensiune nominală (V)	 Număr de poli	a (mm)	b (mm)	c (mm)	d (mm)	f (mm)	IP.. Grad de protecție
TICS-523	32 A	250 V	2P+ 	142	-	74	126	63	IP 44

Desen cotat

