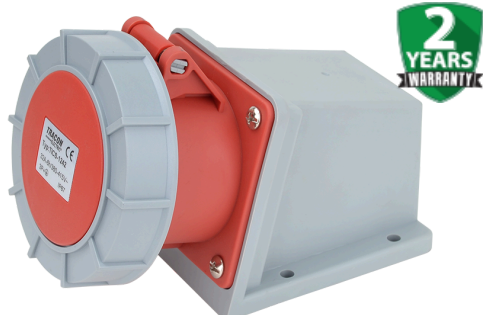




Priză industrială aparentă



32A, 400V, 3P+E, 6h, IP67



- | | | | |
|-------------------------------------|---------------------------|----------------------------------|-------------------|
| • Model: | Surface mounted (plaster) | • Grad de protecție (IP): | IP67 |
| • Amperaj IEC: | 32 A | • Sistem de conectare: | Screwed terminal |
| • Voltaj conform RO 60309-2: | 400 V (50+60 Hz) red | • Material: | Plastic |
| • Pozitie ora: | 6 h | • Tip de fixare: | External mounting |
| • Identificare culori: | Red | • Garanție: | 2 an |

TRACON	I_n Curent nominal (A)	U_n Tensiune nominală (V)	 Număr de poli	a (mm)	c (mm)	d (mm)	f (mm)	IP.. Grad de protecție
TICS-1242	32 A	400 V	3P+ 	154	99	138	93	IP 67

Desen cotat

