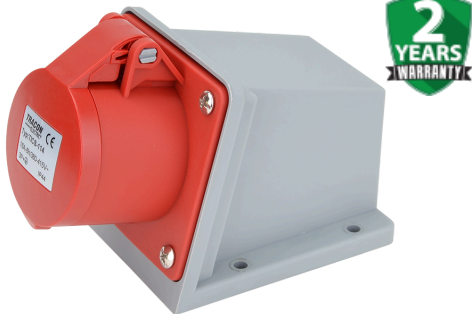



Priză industrială aparentă



16A, 400V, 3P+E, 6h, IP44



- | | | | |
|-------------------------------------|---------------------------|----------------------------------|------------------|
| • Model: | Surface mounted (plaster) | • Identificare culori: | Red |
| • Amperaj IEC: | 16 A | • Grad de protecție (IP): | IP44 |
| • Voltaj conform RO 60309-2: | 400 V (50+60 Hz) red | • Sistem de conectare: | Screwed terminal |
| • Pozitie ora: | 6 h | • Garanție: | 2 an |

TRACON	I_n Curent nominal (A)	U_n Tensiune nominală (V)	 Număr de poli	a (mm)	c (mm)	d (mm)	f (mm)	IP.. Grad de protecție
TICS-114	16 A	400 V	3P+⊕	141	94	126	63	IP 44

Desen cotat

