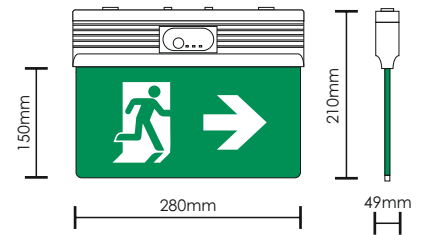




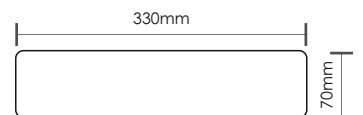
Mounting method



Dimensions



Required opening for suspended wall or ceiling installation



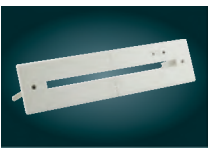
CODE	TYPE	ST	M	NM	IP	Battery	Time	Power	Mains/Emergency	kg
922502513	PLD-25/NiMH	✓	✓	—	IP44	3,6V/1,2Ah Ni-Mh	3 h	4W/4,4 VA	90/100 lm	1073 gr.
922502503	PLD-25/NST	—	✓	✓	IP44	3,6V/1,5Ah Ni-Mh	3 h	4,3W/4,6 VA	90/100 lm	1068 gr.
922502501	PLD-25/SC	✓	✓	—	IP44	Supercapacitor	1 h	4,3W/4,7VA	73/20 lm	1088 gr.

SINGLE-SIDE PICTOGRAMS

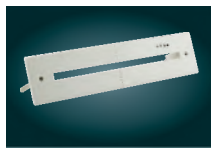
CODE	TYPE	DESCRIPTION	INCLUDED	ON DEMAND	Pictogram
804010125	SW-25/L	Marking overlay with left indication 26m	✓		←
804010025	SW-25/R	Marking overlay with right indication 26m	✓		→
804010325	SW-25/DL	Marking overlay with down left indication 26m		✓	↓
804010225	SW-25/DR	Marking overlay with down right indication 26m		✓	↘
804010525	SW-25/UL	Marking overlay with up left indication 26m		✓	↖
804010425	SW-25/UR	Marking overlay with up right indication 26m		✓	↗

ACCESSORIES ON DEMAND

CODE	TYPE	DESCRIPTION	kg
927251001	A-2510/PL	Suspended mounting base for luminaires without Autotest	169 gr.
927251002	A-2510/PL/ST/M	Suspended mounting base for Self-testing luminaires	181 gr.
927321300	A-2130	Set of accessories (1m) for ceiling mounting (white)	375 gr.
927321310	A-2131	Set of accessories (0,5m) for ceiling mounting (white)	280 gr.
927321320	A-2132	Set of accessories (0,25m) for ceiling mounting (white)	139 gr.
927321330	A-2133	Accessory for vertical wall mounting (white)	108 gr.



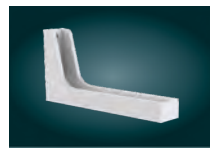
A-2510/PL



A-2510/PL/ST/M



A-2130, A-2131, A-2132



A-2133

BATTERIES

CODE	TYPE	DESCRIPTION
601103612	A-965/HT	Battery 3,6V/1,2Ah Ni-Mh
601103612	A-965/HT	Battery 3,6V/1,5Ah Ni-Mh

10
years
guarantee

Innovation!

The PLD-25/SC has one super capacitor instead of normal batteries and offers a 10 year guarantee for the good operation of the entire device. They are self-testing with advance capacitor charging and discharging circuits while simultaneously achieving low power consumption. Ambient operating temperature -40° +65°.

!
innovation
without
batteries

Using supercapacitors as energy storage media in place of conventional batteries is the most modern and sophisticated solution in emergency luminaires. Designed for, at least, 10 years of reliable function with much higher number of charging /discharging cycles. It can withstand extreme temperatures like as -40°C and 65°C without seriously degradation of it's specifications.



Comparing table	Supercapacitor	Ni-Cd battery	Ni-MH battery
Designed for	>10 years	4 years	4 years
Number of charging / discharging cycles	>500.000	500 - 2000	300 - 1500
Working temperature range	-40 C ^o - 65C ^o	0 - 55C ^o	5 - 55C ^o