

WEATHER LIGHT

The luminaires of the Weather Light family are Olympia Electronics' offering for an emergency lighting and signage system suitable for environmentally burdened spaces. The Weather Light luminaires are specially designed for use in industrial and commercial installations, as they offer increased protection against impacts and intrusion from foreign objects and moisture. Furthermore, for use in installations with low ambient temperatures or high Electromagnetic interference, there is a version available that uses supercapacitors as a power source, rather than conventional batteries.

The high luminous flux output versions 4P and 6P can be used in large rooms with high ceilings. Also, there are versions available with 90 minutes, 3 hours, or 8 hours autonomy.

The Weather Light family luminaires can be used as double-sided emergency exit signs with the use of plastic diffusers A-1017 or A-9100. Also, the A-9000 accessory enables the GR-9XX luminaires to be installed as single-sided emergency exit signs. The GR-19XX self-testing luminaires can be remotely tested via the magnetic card A-1900.

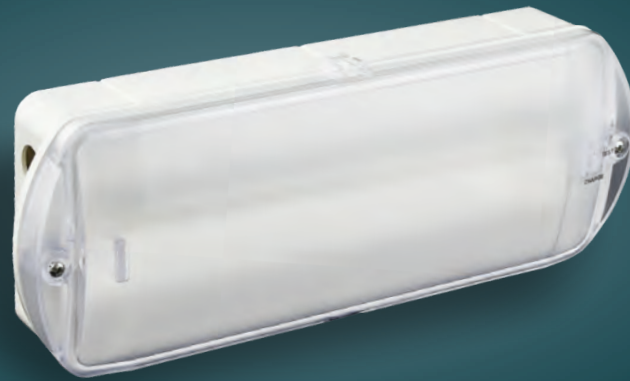


GR-19xx

CE	22m		IP65
	Ni-Cd	Ni-Mh	ST SELF TESTING
1,5-3h			

GR-9xx

CE	26m		IP65
	Ni-Cd	Ni-Mh	ST SELF TESTING
1,5-3h	IK08		



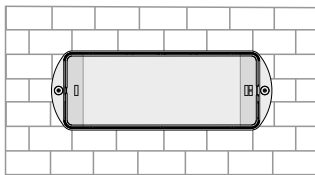
GR-19xx



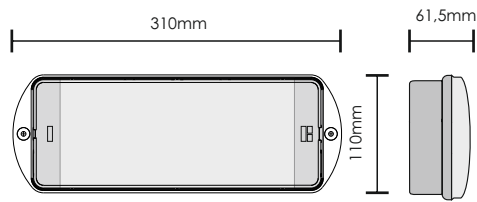
*They have BSI & CNBOP-PIB certifications

Mounting method

Wall mounting

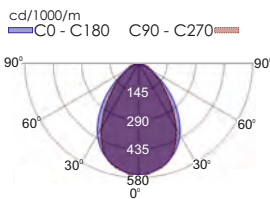


Dimensions

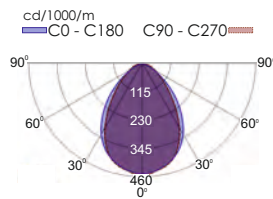


Photometric

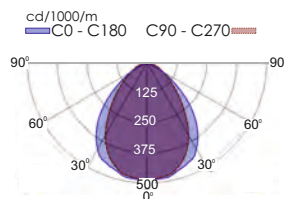
GR-1935_15L



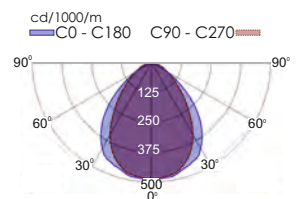
GR-1938-30L



GR-1938-4P



GR-1938-6P



Internal selection - without L1	CODE	TYPE	ST	M	NM	IP	Battery	Time	Power	Mains/Emergency	kg
		923193800	GR-1938/15L*	✓	✓	✓	IP65	3,6V/600mAh Ni-Cd	1,5 h	3,4W/3,8VA	105/105 lm
	923193801	GR-1938/30L*	✓	✓	✓	IP65	3,6V/1,5Ah Ni-Cd	1,5 h	4,5W/4,9VA	210/210 lm	811 gr.
	923193900	GR-1939/15L*	✓	✓	✓	IP65	3,6V/1,5Ah Ni-Cd	3 h	3,3W/3,7VA	105/105 lm	818 gr.
	923193901	GR-1939/30L*	✓	✓	✓	IP65	3,6V/3Ah Ni-Cd	3 h	5,3W/5,6VA	210/210 lm	890 gr.
	923193802	GR-1938/4P	✓	✓	✓	IP65	4,8V/1,5Ah Ni-Cd	1,5 h	4,7W/5,1VA	175/350 lm	865 gr.
	923193803	GR-1938/6P	✓	✓	✓	IP65	4,8V/3Ah Ni-Cd	1,5 h	6,2W/6,5VA	245/480 lm	950 gr.
	923193902	GR-1939/4P	✓	✓	✓	IP65	4,8V/3Ah Ni-Cd	3 h	5,3W/5,7VA	175/350 lm	950 gr.
	923193903	GR-1939/6P	✓	✓	✓	IP65	4,8V/4Ah Ni-Mh	3 h	6,2W/6,5VA	245/480 lm	1005 gr.
	923193500	GR-1935/15L*	—	✓	✓	IP65	3,6V/600mAh Ni-Cd	1,5 h	3,1W/3VA	40/105 lm	783 gr.
	923193501	GR-1935/30L*	—	✓	✓	IP65	3,6V/1,5Ah Ni-Cd	1,5 h	3,3W/3,5VA	40/210 lm	840 gr.
	923193600	GR-1936/15L*	—	✓	✓	IP65	3,6V/1,5Ah Ni-Cd	3 h	3,4W/3,6VA	40/105 lm	839 gr.
	923193601	GR-1936/30L*	—	✓	✓	IP65	3,6V/3Ah Ni-Cd	3 h	4,5W/4,8VA	40/210 lm	940 gr.

The packaging contains 12pcs.

SINGLE-SIDE PICTOGRAMS

CODE	TYPE	DESCRIPTION	INCLUDED	ON DEMAND	
705693006	S-1938/LO	Pictogram Left ISO single side 22m	✓		
705693008	S-1938/RO	Pictogram Right ISO single side 22m	✓		
705693007	S-1938/DO	Pictogram Down ISO single side 22m	✓		
705690019	S-1938/UO	Pictogram Up ISO single side 22m		✓	

ACCESSORIES

CODE	TYPE	DESCRIPTION	kg
927910000	A-9100/ST	Plastic double sided diffuser for self-testing	513,50 gr.
927910001	A-9100	Plastic double sided diffuser	513,50 gr.
927190000	A-1900	Magnetic test card	24,50 gr.



A-9100/ST
A-9100

A-1900

BATTERIES

CODE	TYPE	DESCRIPTION
601003606	A-926	Battery 3,6V/600mAh Ni-Cd
601213615	B-972/HT	Battery 3,6V/1,5Ah HT Ni-Cd
601233630	B-949/HT	Battery 3,6V/3Ah HT Ni-Cd
601214815	B-973/HT	Battery 4,8V/1,5Ah HT Ni-Cd
601214830	B-941/HT	Battery 4,8V/3Ah HT Ni-Cd
601134840	B-936/HT60SC	Battery 4,8V/4Ah Ni-Mh