



- Designed for installation in explosive atmospheres
- The main body is constructed of aluminum (painted yellow, RAL-1003) and the diffuser from polycarbonate with UV-protection or with special durable glass.
- The luminaires that contain batteries have a charge indicator and connector for installing a remote test button.

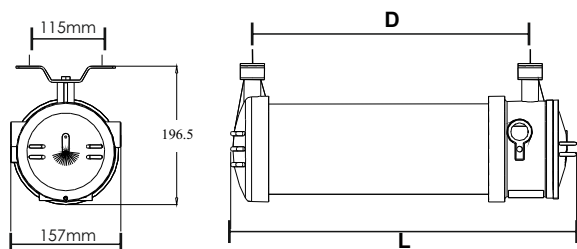
#### General characteristics

---

- Ni-Cd batteries
- High power illumination
- Suitable for explosive gas atmospheres and explosive dust atmospheres
- IP66, IK05 & IK07 degrees of cover protection
- Charge indication LED
- Construction material: Aluminum and Polycarbonate or Aluminum and glass
- Operation temperature range: 0 C up to 40 C the emergency luminaires, -20 C up to 40 C for the CBS luminaires
- Complying with the ATEX 94/9/EC
- Humidity: up-to 95% relative humidity

#### Dimensions

---



CATEGORY	Dimensions DxL
E1	375mmx485mm
E2	640mmx750mm

# ANTIEXPLOSIVE LED LIGHT



Polycarbonate Glass

1-3h IP66 CE Ik07 Ik05

Ex db IIC T6 Gb  
Ex tb IIIC T85 Db

Ex

CODE	TYPE	ST	M	NM	IP66	6V/1,6Ah	1 h	< 130mA	DIFFUSER	Mains/ Emergency	DIMENSIONS	kg
923411701	PTD1700XP	✓	✓	✓	IP66	6V/1,6Ah	1 h	< 130mA	Polycarbonate	2100/750lm	E1	4.600 gr.
923412703	PTD2700XP	—	✓	✓	IP66	6V/1,6Ah	1 h	< 190mA	Polycarbonate	4600/750lm	E2	5.900 gr.
923412707	PTD2700XP3	—	✓	✓	IP66	6V/4Ah	3 h	< 200mA	Polycarbonate	4600/750lm	E2	6.300 gr.
923411703	GTD1700XP	—	✓	✓	IP66	6V/1,6Ah	1 h	< 130mA	Glass 5mm	2400/800lm	E1	5.400 gr.
923412711	GTD2700XP	—	✓	✓	IP66	6V/1,6Ah	1 h	< 190mA	Glass 5mm	4800/800lm	E2	6.600 gr.
923412715	GTD2700XP3	—	✓	✓	IP66	6V/4Ah	3 h	< 200mA	Glass 5mm	4800/800lm	E2	7.000 gr.
923411401	PTD1400X	—	—	✓	IP66	3,6V/1,6Ah	1 h	< 25mA	Polycarbonate	350lm	E1	4.745 gr.
923412701	PTD2700X	—	—	✓	IP66	6V/1,6Ah	1 h	< 25mA	Polycarbonate	750lm	E2	5.800 gr.
923411403	PTD1400X3	—	—	✓	IP66	3,6V/4Ah	3 h	< 30mA	Polycarbonate	350lm	E1	4.700 gr.
923412705	PTD2700X3	—	—	✓	IP66	6V/4Ah	3 h	< 35mA	Polycarbonate	750lm	E2	6.200 gr.
923411405	GTD1400X	—	—	✓	P66	3,6V/1,6Ah	1 h	< 25mA	Glass 5mm	400lm	E1	5.300 gr.
923412709	GTD2700X	—	—	✓	IP66	6V/1,6Ah	1 h	< 25mA	Glass 5mm	800lm	E2	6.500 gr.
923411407	GTD1400X3	—	—	✓	IP66	3,6V/4Ah	3 h	< 30mA	Glass 5mm	400lm	E1	5.500 gr.
923412713	GTD2700X3	—	—	✓	IP66	6V/4Ah	3 h	< 35mA	Glass 5mm	800lm	E2	6.900 gr.

## SINGLE-SIDE PICTOGRAMS

CODE	TYPE	DESCRIPTION	INCLUDED	ON DEMAND
705690016	S65/L	Marking overlay with left indication	✓	
705690017	S65/R	Marking overlay with right indication	✓	
705690018	S65/D	Marking overlay with down indication	✓	
705690019	S65/U	Marking overlay with up indication		✓

## INCLUDED IN THE PACKAGE

CODE	TYPE	DESCRIPTION	kg
751500102	NPT34	Sealing grommet	105,5 gr.
808700069	A-FSA	Mounting base	156,5 gr.



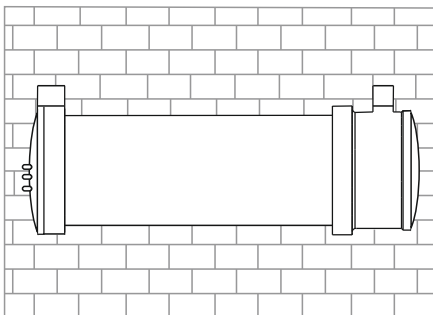
NPT34



A-FSA

## Mounting methods

### Wall mounting



### Ceiling installation with A-FSA mounting base

