



# ECO LIGHT



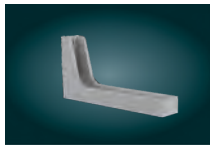
CODE	TYPE	ST	M	NM	IP	Battery	3h	Power	Mains/Emergency	kg
922503000	CLD-30	✓	✓	—	IP40	3,6V/1,5Ah Ni-MH	3 h	2,7W/3VA	63 / 125 lm	1350 gr.
922503001	CLD-30/NST	—	✓	—	IP40	3,6V/1Ah Ni-Cd	3 h	3,5W/3,7VA	45 / 95 lm	1323 gr.

SINGLE-SIDE PICTOGRAMS		DESCRIPTION	INCLUDED	ON DEMAND	
804030031	SW-30/L	Marking overlay with left indication 30m	✓		
804030030	SW-30/R	Marking overlay with right indication 30m	✓		
804030033	SW-30/DL	Marking overlay with down left indication 30m		✓	
804030032	SW-30/DR	Marking overlay with down right indication 30m		✓	

CODE	TYPE	DESCRIPTION	INCLUDED	ON DEMAND	kg
927311300	A-1130	Set of accessories (1m) for ceiling mounting (silver)		✓	375 gr.
927311310	A-1131	Set of accessories (0,5m) for ceiling mounting (silver)		✓	280 gr.
927311320	A-1132	Set of accessories (0,25m) for ceiling mounting (silver)		✓	139 gr.
927311330	A-1133	Accessory for vertical wall mounting (silver)		✓	106,5 gr
927311340	A-1134	Accessory for wall mounting (silver)	✓		111 gr.



A-1130, A-1131, A-1132



A-1133



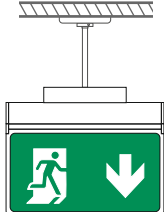
A-1134

BATTERIES		
CODE	TYPE	DESCRIPTION
601103612	A-965/HT	Battery 3,6V/1,2Ah Ni-Mh
601223610	A-938/HT	Battery 3,6V/1Ah Ni-Cd

## Mounting method



Ceiling mounting with extension rod 0,25-1m



## Dimensions

