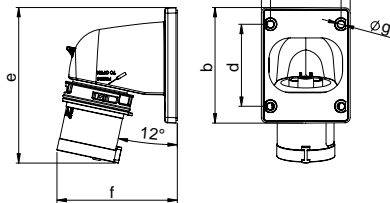


CEE Flanged plugs



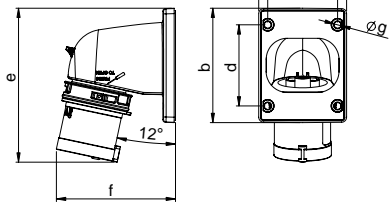
Flanged plug angled IP44

TWIST

Poles	16 Amp			32 Amp		
	3	4	5	3	4	5
a [mm]	66	66	90	90	90	90
b [mm]	86	86	100	100	100	100
c [mm]	53	53	77	77	77	77
d [mm]	61	61	85	85	85	85
e [mm]	116	117	153	163	163	164
f [mm]	90	93	98	100	100	103
g [mm]	5	5	5	5	5	5
: L U H 2 H [L E Φ H [mmO [mm	1-2,5			2,5-6		
Wire solid [mm ²]	1-4			2,5-10		
Contact screws [Ncm]	100			110		
Weight [g]	126	144	190	200	220	247

- with screw terminals
- housing material: PC/ABS
- contacts: brass
 - to order nickel-plated contacts please add a "v" e.g. 77715-6v

IP44 splashproof



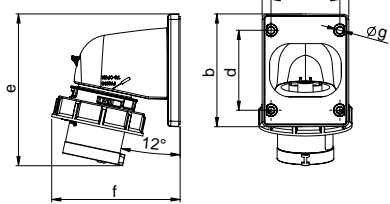
Flanged plug angled IP44

TWIST TT

Poles	16 Amp			32 Amp		
	3	4	5	3	4	5
a [mm]	66	66	90	90	90	90
b [mm]	86	86	100	100	100	100
c [mm]	53	53	77	77	77	77
d [mm]	61	61	85	85	85	85
e [mm]	116	117	153	163	163	164
f [mm]	90	93	98	100	100	103
g [mm]	5	5	5	5	5	5
: L U H 2 H [L E Φ H [mmO [mm	1-2,5			2,5-6		
Wire solid [mm ²]	1-4			2,5-10		
Weight [g]	129	148	193	204	225	256

- screwless connection technology
- housing material: PC/ABS
- contacts: brass
 - to order nickel-plated contacts please add a "v" e.g. 77715-6TTv

IP44 splashproof



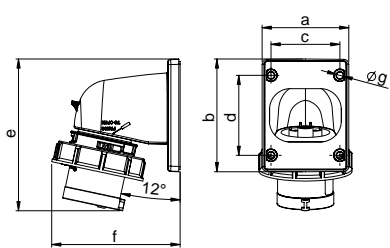
Flanged plug angled IP67

TWIST

Poles	16 Amp			32 Amp		
	3	4	5	3	4	5
a [mm]	66	66	90	90	90	90
b [mm]	86	86	100	100	100	100
c [mm]	53	53	77	77	77	77
d [mm]	61	61	85	85	85	85
e [mm]	116	117	153	163	163	164
f [mm]	99	103	107	110	110	114
g [mm]	5	5	5	5	5	5
: L U H 2 H [L E Φ H [mmO [mm	1-2,5			2,5-6		
Wire solid [mm ²]	1-4			2,5-10		
Contact screws [Ncm]	100			110		
Weight [g]	146	168	219	240	260	291

- with screw terminals
- housing material: PC/ABS
- contacts: brass
 - to order nickel-plated contacts please add a "v" e.g. 777152-6v

IP67 watertight



Flanged plug angled IP67

TWIST TT

Poles	16 Amp			32 Amp		
	3	4	5	3	4	5
a [mm]	66	66	90	90	90	90
b [mm]	86	86	100	100	100	100
c [mm]	53	53	77	77	77	77
d [mm]	61	61	85	85	85	85
e [mm]	116	117	153	163	163	164
f [mm]	99	103	107	110	110	114
g [mm]	5	5	5	5	5	5
: L U H 2 H [L E Φ H [mmO [mm	1-2,5			2,5-6		
Wire solid [mm ²]	1-4			2,5-10		
Weight [g]	149	172	228	244	266	303

- screwless connection technology
- housing material: PC/ABS
- contacts: brass
 - to order nickel-plated contacts please add a "v" e.g. 777152-6TTv

IP67 watertight

110V~

Amp.	Poles	pack. unit	50/60Hz	50/60Hz	50/60Hz	50/60Hz	100-300Hz	301-500Hz
			4h	3p=6h 4p+5p= 9h	3p= 9h 4p+5p= 6h	7h	10h	2h
			Cat.No.	Cat.No.	Cat.No.	Cat.No.	Cat.No.	Cat.No.
16	3	10	77713-4	77713-6	77713-9	77713-7	77713-10	77713-2
16	4	10	77714-4	77714-9	77714-6	77714-7	77714-10	77714-2
16	5	10	77715-4	77715-9	77715-6	77715-7	77715-10	77715-2
32	3	5	77723-4	77723-6	77723-9	77723-7	77723-10	77723-2
32	4	5	77724-4	77724-9	77724-6	77724-7	77724-10	77724-2
32	5	5	77725-4	77725-9	77725-6	77725-7	77725-10	77725-2



77713-6



16	3	10	77713-4TT	77713-6TT	77713-9TT			
16	4	10	77714-4TT	77714-9TT	77714-6TT			
16	5	10	77715-4TT	77715-9TT	77715-6TT			
32	3	5	77723-4TT	77723-6TT	77723-9TT			
32	4	5	77724-4TT	77724-9TT	77724-6TT			
32	5	5	77725-4TT	77725-9TT	77725-6TT			

TURBO click
TERMINAL



77713-6TT



16	3	10	777132-4	777132-6	777132-9	777132-7	777132-10	777132-2
16	4	10	777142-4	777142-9	777142-6	777142-7	777142-10	777142-2
16	5	5	777152-4	777152-9	777152-6	777152-7	777152-10	777152-2
32	3	5	777232-4	777232-6	777232-9	777232-7	777232-10	777232-2
32	4	5	777242-4	777242-9	777242-6	777242-7	777242-10	777242-2
32	5	5	777252-4	777252-9	777252-6	777252-7	777252-10	777252-2



777132-6



16	3	10	777132-4TT	777132-6TT	777132-9TT			
16	4	10	777142-4TT	777142-9TT	777142-6TT			
16	5	5	777152-4TT	777152-9TT	777152-6TT			
32	3	5	777232-4TT	777232-6TT	777232-9TT			
32	4	5	777242-4TT	777242-9TT	777242-6TT			
32	5	5	777252-4TT	777252-9TT	777252-6TT			

TURBO click
TERMINAL



777152-6TT

