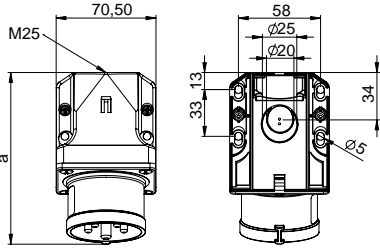


CEE Phase inverters

Phase inverter - Wall mounted plug IP44



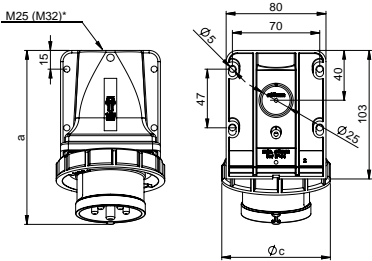
angle=15°

	16 Amp		32 Amp	
Poles		5	4	5
a [mm]		122	131	132
Height [mm]		79	85	85
M [mm]		25	25	25
: L U H 2 H [L E O H class 5 or 6 [mm ²]	O	1-2,5	2,5-6	
Contact screws [Ncm]		100	110	
Weight [g]		205	234	255

- with screw terminals
- housing material: PA6
- contacts: nickel-plated contacts
- top and rear entry
- incl. threaded cable grommet

IP44 splashproof

Phase inverter - Wall mounted plug IP67



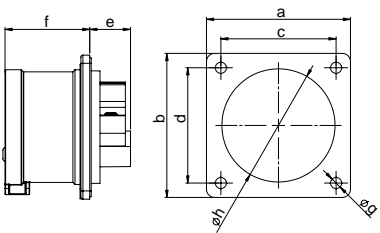
angle=15°

	16 Amp		32 Amp	
Poles		5	4	5
a [mm]		140	153	152
Height [mm]		100	104	102
c [mm]		71	93	100
M* [mm]		25	25	25
: L U H 2 H [L E O H class 5 or 6 [mm ²]	O	1-2,5	2,5-6	
Contact screws [Ncm]		100	110	
Weight [g]		241	276	307

- with screw terminals
- housing material: PA6
- contacts: nickel-plated contacts
- top and rear entry

IP67 watertight

Phase inverter - Flanged plug straight IP44

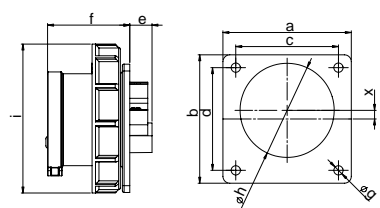


	16 Amp		32 Amp	
Poles		5	4	5
) OD Q J H D [E [mm]m]		70	70	70
) L [L Q J F H Q W H U F [[GQn]mm]		56	56	56
e [mm]		20	21	21
f [mm]		42	51	51
g [mm]		5,5	5,5	5,5
h [mm]		55	55	55
: L U H 2 H [L E O H class 5 or 6 [mm ²]	O	1-2,5	2,5-6	
Contact screws [Ncm]		100	110	
Weight [g]		118	146	167

- with screw terminals
- housing material: PA6
- contacts: nickel-plated contacts
- According to EN 60309:
For correct use a locking device has to be provided (see page 10)

IP44 splashproof

Phase inverter - Flanged plug straight IP67



	16 Amp		32 Amp	
Poles		5	4	5
) OD Q J H D [E [mm]m]		75	75	75
) L [L Q J F H Q W H U F [[GQn]mm]		60	60	60
e [mm]		13	15	14
f [mm]		48	58	58
g [mm]		5,5	5,5	5,5
h [mm]		55	55	55
i [mm]		87	93	100
j [mm]		5	4,5	0
: L U H 2 H [L E O H class 5 or 6 [mm ²]	O	1-2,5	2,5-6	
Contact screws [Ncm]		100	110	
Weight [g]		150	185	215

- with screw terminals
- housing material: PA6
- contacts: nickel-plated contacts
- According to EN 60309:
For correct use a locking device has to be provided (see page 10)
- for 16A 5p and 32 5p the plug is
S O D F H G R 3 F H Q W H U H G I R U N
the standards

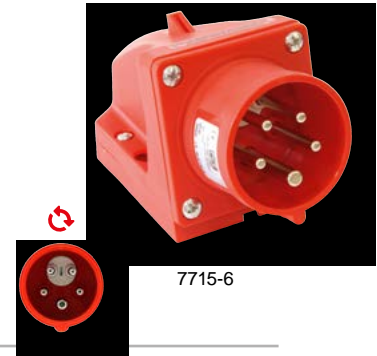
IP67 watertight

Amp.	Poles	pack. unit	50/60Hz	50/60Hz
			4p= 9h	4p+5p= 6h
			<u>Cat.No.</u>	<u>Cat.No.</u>
16	5	10		7715-6
16	5	10		7715-6d
32	4	10	7724-9	7724-6
32	4	10	7724-9d	7724-6d
32	5	10		7725-6
32	5	10		7725-6d

with cap

with cap

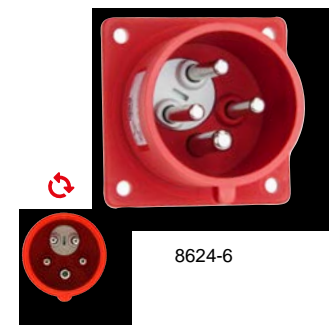
with cap



16	5	5		77152-6k
32	4	5		77242-9k
32	5	5		77252-6k



2 DQJH	[1 [LQJ FHQWHU	[
16	5	10	8615-6	
32	4	10	8624-9	8624-6
32	5	10		8625-6



2 DQJH	[1 [LQJ FHQWHU	[
16	5	10	86152-6	
32	4	10	86242-9	86242-6
32	5	10		86252-6

