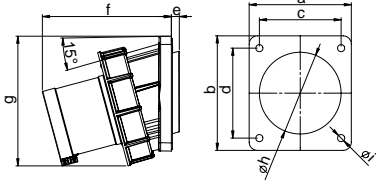


CEE Flanged plugs



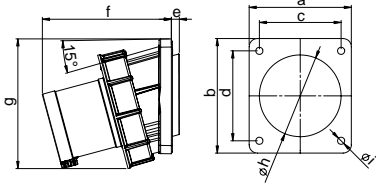
Flanged plug sloping IP66/67

POWER TWIST

Poles	63 Amp		
	3	4	5
a [mm]	100	100	100
b [mm]	112	112	112
c [mm]	80	80	80
d [mm]	88	88	88
e [mm]	8	8	8
f [mm]	127	127	127
g [mm]	127	127	127
h [mm]	80	80	80
i [mm]	7	7	7
: L U H 2 H [L E Φ H [mmO [mm	6-16		
Wire solid [mm ²]	6-25		
Contact screws [Ncm]	200		
Weight [g]	515	566	608

- contact frame with screws
- housing material: PA6
- contacts: nickel-plated contacts, with pilot contact (see page 8)
- for waterproof cover see accessories on page 50

IP66/67 watertight



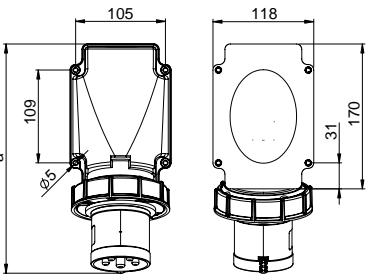
Flanged plug sloping IP66/67

POWER TWIST

Poles	125 Amp		
	3	4	5
a [mm]	120	120	120
b [mm]	130	130	130
c [mm]	100	100	100
d [mm]	108	108	108
e [mm]	8	8	8
f [mm]	139	139	139
g [mm]	145	145	145
h [mm]	100	100	100
i [mm]	7	7	7
: L U H 2 H [L E Φ H [mmO [mm	16-50		
Wire solid [mm ²]	16-70		
Contact screws [Ncm]	450		
Weight [g]	833	942	1044

- contact frame with hexagon socket screws
- housing material: PA6
- contacts: nickel-plated contacts, with pilot contact (see page 8)
- for waterproof cover see accessories on page 50

IP66/67 watertight



Flanged plug IP66/67

POWER TWIST

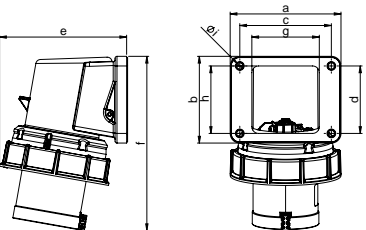
Poles	63 Amp		
	3	4	5
a [mm]	271	271	271
Height [mm]	124	124	124
: L U H 2 H [L E Φ H [mmO [mm	6-16		
Wire solid [mm ²]	6-25		
Contact screws [Ncm]	200		
Weight [g]	653	704	746

- contact frame with screws
- housing material: PC/ABS
- contacts: nickel-plated contacts, with pilot contact (see page 8)
- for waterproof cover and cable-glands see accessories page 50

• rear entry
a L Q F O 2 D Q J H J D V N H W

IP66/67 watertight

angle=15°



Flanged plug compact IP66/67

POWER TWIST

Poles	63 Amp		
	3	4	5
a [mm]	116	116	116
b [mm]	91	91	91
c [mm]	95	95	95
d [mm]	70	70	70
e [mm]	132	132	132
f [mm]	181	181	181
g [mm]	70	70	70
h [mm]	70	70	70
Ø i [mm]	6,5	6,5	6,5
: L U H 2 H [L E Φ H [mmO [mm	6-16		
Wire solid [mm ²]	6-25		
Contact screws [Ncm]	200		
Weight [g]	547	598	640

- contact frame with screws
- housing material: PA6
- contacts: nickel-plated contacts, with pilot contact (see page 8)
- for waterproof cover and cable-glands see accessories page 50

• rear entry
a L Q F O 2 D Q J H J D V N H W

IP66/67 watertight

110V~

Amp.	Poles	pack. unit	50/60Hz	50/60Hz	50/60Hz	50/60Hz	100-300Hz	301-500Hz
			4h	3p=6h 4p+5p= 9h	3p= 9h 4p+5p= 6h	7h	10h	2h
			Cat.No.	Cat.No.	Cat.No.	Cat.No.	Cat.No.	Cat.No.
2 D Q J H		[1 [L Q J F H Q W H U			[
63	3	2	733-4	733-6	733-9	733-7	733-10	733-2
63	4	2	734-4	734-9	734-6	734-7	734-10	734-2
63	5	2	735-4	735-9	735-6	735-7	735-10	735-2



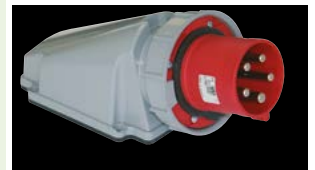
735-6

Amp.	Poles	pack. unit	50/60Hz	50/60Hz	50/60Hz	50/60Hz	100-300Hz	301-500Hz
			4h	3p=6h 4p+5p= 9h	3p= 9h 4p+5p= 6h	7h	10h	2h
			Cat.No.	Cat.No.	Cat.No.	Cat.No.	Cat.No.	Cat.No.
2 D Q J H		[1 [L Q J F H Q W H U			[
125	3	2	743-4	743-6	743-9	743-7	743-10	743-2
125	4	2	744-4	744-9	744-6	744-7	744-10	744-2
125	5	2	745-4	745-9	745-6	745-7	745-10	745-2



745-6

Amp.	Poles	pack. unit	50/60Hz	50/60Hz	50/60Hz	50/60Hz	100-300Hz	301-500Hz
			4h	3p=6h 4p+5p= 9h	3p= 9h 4p+5p= 6h	7h	10h	2h
			Cat.No.	Cat.No.	Cat.No.	Cat.No.	Cat.No.	Cat.No.
2 D Q J H		[1 [L Q J F H Q W H U			[
63	3	2	77733-4	77733-6	77733-9	77733-7	77733-10	77733-2
63	4	2	77734-4	77734-9	77734-6	77734-7	77734-10	77734-2
63	5	2	77735-4	77735-9	77735-6	77735-7	77735-10	77735-2



77735-6

Amp.	Poles	pack. unit	50/60Hz	50/60Hz	50/60Hz	50/60Hz	100-300Hz	301-500Hz
			4h	3p=6h 4p+5p= 9h	3p= 9h 4p+5p= 6h	7h	10h	2h
			Cat.No.	Cat.No.	Cat.No.	Cat.No.	Cat.No.	Cat.No.
2 D Q J H		[1 [L Q J F H Q W H U			[
63	3	2	77733-4k	77733-6k	77733-9k	77733-7k	77733-10k	77733-2k
63	4	2	77734-4k	77734-9k	77734-6k	77734-7k	77734-10k	77734-2k
63	5	2	77735-4k	77735-9k	77735-6k	77735-7k	77735-10k	77735-2k



77735-6k

