

## FUSE SWITCH DISCONNECTORS FOR INSTALLATION ONTO 60 mm BUSBAR SYSTEM RBK 00 pro-S

- system of protective covers provides touch protection
- possible installation of distribution board's protective panel at depth of 32 mm or 70 mm
- built-in hooked clamps provide fast installation onto busbar system
- top/bottom cable terminal

Table 85. Technical data

Parameter		RBK 00 pro-S		
Rated thermal current $I_{th}^{1)}$	A	160		
Rated voltage $U_n$	V	690		
Utilization category	-	AC-23B	AC-22B	DC-22B
Rated switching current $I_e$	A	160	160	160
Rated switching voltage $U_e$	V	400	690	250
Rated short circuit making current	690 V	kA	100	25/ 250V
	500 V			
	400 V			
Rated short circuit withstand current	690 V	kA	100	25/ 250V
	500 V			
	400 V			
Rated insulation voltage $U_i$	V	1000		
Rated impulse withstand voltage $U_{imp}$	kV	8		
Rated frequency	Hz	50-60	-	
Mechanical durability	Number of cycles	1600		
Electrical durability	Number of cycles	200		
IP degree of protection	IP	20		
Weight	kg	~0,9		
Size of fuse links	-	00		

<sup>1)</sup>  $I_{th}$  - thermal current of fuse switch disconnecter without external enclosure, installed outdoors  
(In case of the installation of fuse switch disconnectors in enclosures then load factor should be considered)



RBK 00 pro-S

RBK 00 pro-S

Table 86. Versions

	RBK 00 pro-S	Cable terminal	Article No.
APASYS 60	<b>For installation on to 60 mm busbar system</b>		
	RBK 00 pro-SG-M	cable terminal – top, for connection of conductors with lug terminals	M8 screws 63-823259-121
	RBK 00 pro-SD-M	cable terminal – bottom, for connection of conductors with lug terminals	M8 screws 63-823259-141
	RBK 00 pro-SG-R	cable terminal-top, for connection of conductors with bare ends	frame clamps 63-823259-151
	RBK 00 pro-SD-R	cable terminal-bottom, for connection of conductors with bare ends	frame clamps 63-823259-161

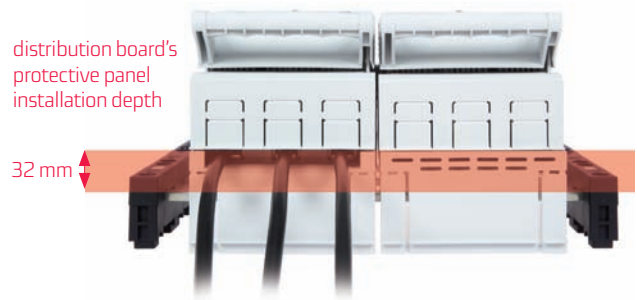
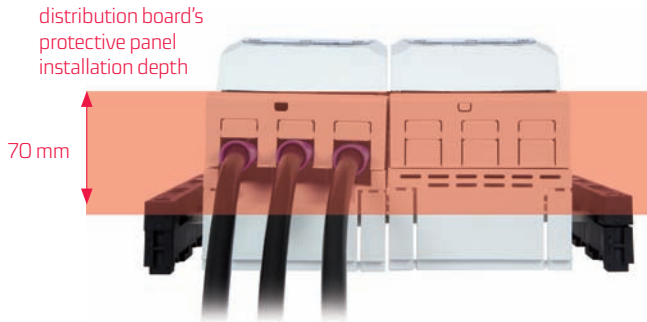
Table 87. RBK 00 pro-S terminal clamps

Description	Clamp	Drawing of clamp	Cross-section of conductors	Cu bar	Tightening torque
RBK 00 pro-SGM RBK 00 pro-SDM	M8 x 16 screw		conductor with lug terminal up to 70 mm <sup>2</sup>	maximum bar width 20 mm	10 Nm*
RBK 00 pro-SGR RBK 00 pro-SDR	frame clamps		4 ÷ 95 mm <sup>2</sup>	-	6 Nm* 3 Nm*

For stranded conductors using cable ferrules is recommended  
\*using of tension wrench is recommended

Fuse switch disconnectors **RBK 00pro-S** are designed for installation of distribution board's protective panels at two depths:

- covering system at 70 mm depth
- covering system at 32 mm depth



Fuse switch disconnectors **RBK 00 pro-S** are manufactured in two versions depending on type of cable terminal

- **RBK 00 pro-SD**-with bottom cable terminal
- **RBK 00 pro-SG**-with top cable terminal

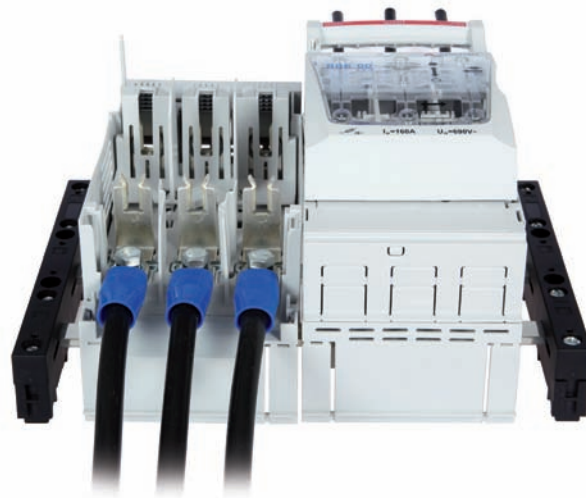


Fuse switch disconnecter **RBK 00 pro-S** has special cavity in it's main base encasing busbar system's support.

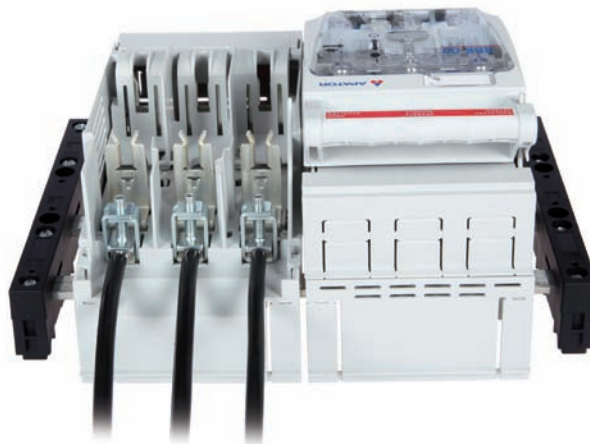


Cable terminals:

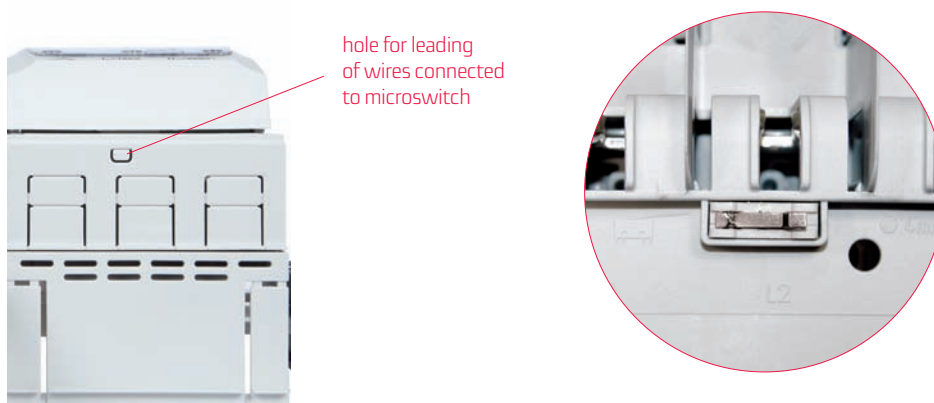
M8 screw terminal (**RBK 00 pro-SDM, RBK 00 pro-SGM**)



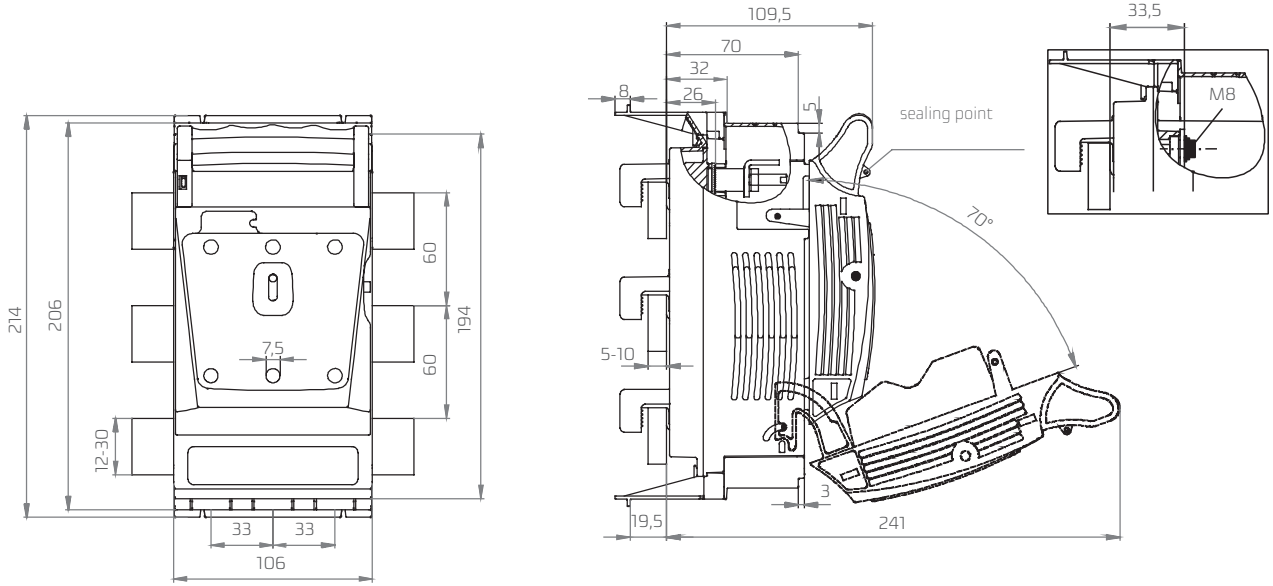
Frame clamp (**RBK 00 pro-SDR, RBK 00 pro-SGR**)



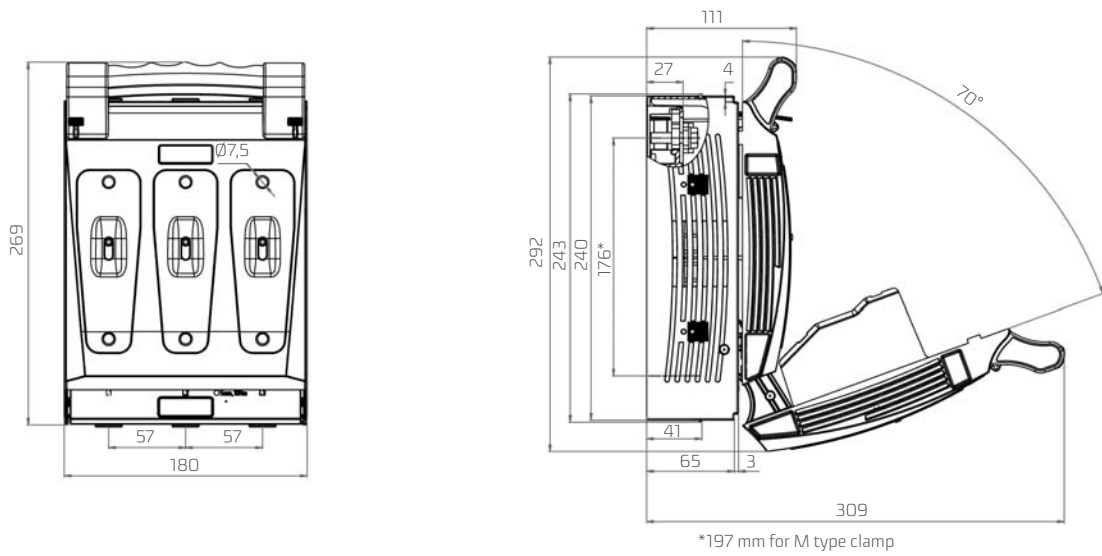
It is possible to install **microswitch indicating** position in fuse switch disconnectors **RBK 00 pro-S**.



RBK 00 pro-S



RBK 1, RBK 1 pro



RBK 1 pro-V

