

## CONSTRUCTION & APPLICATIONS

**PBD** fuse base consist of flame retardant thermoplastic base with spring-loaded contacts designed to be engaged with the blade contacts of NH fuse link. Contacts of sizes 00, 1, 2 are tin plated, contacts of size 3 are silver plated. On request contacts of sizes 00, 1, 2 are plated with silver.

**PBD** fuse-bases are designed for installation indoors, in environment free of dust, aggressive or explosive gases:

- junction boxes,
- supply points,
- distribution boards,
- capacitor bank protection.

## OPERATING CONDITIONS

- altitude up to 2000 meters above sea level,
- ambient temperature from -25°C to +55°C,
- for outdoors installation PBD fuse basess should be mounted in cabinets with protection degree IP34 or higher.

## CONFORMITY WITH STANDARDS

IEC 60269-1, PN-HD 60269-2:2008, PN-EN 60269-1:2010

## VERSIONS

PBD fuse bases are designed for fuse links size 00-3. There are following versions:

- size 00 - 160 A
  - with double side screw terminals for lug terminal or busbar - fuse base 1-pole PBD 00, fuse base 3-poles PBD 003 HH,
  - with V-terminal from one side and screw terminal from opposite side - fuse base 1-pole PBD 00-1V, fuse base 3-poles PBD 00 3-1V,
  - with both sides V-terminals - fuse base 1-pole PBD 00-2V, fuse base 3-poles PBD 00 3-VV,
  - the possibility of using fuse links size 00 and 000.
- size 1 – 250 A
  - with double side screw terminals for lug terminal or busbar - fuse base 1-pole PBD 1, fuse base 3-poles PBD 13,
  - with V-terminal from one side and screw terminal from opposite side - fuse base 1-pole PBD 1-1V, fuse base 3-poles PBD 13-1V,
  - with both sides V-terminals - fuse base 1-pole PBD 1-2V, fuse base 3-poles PBD 13-2V.
- size 2 – 400 A
  - with double side screw terminals for lug terminal - fuse base PBD 2,
  - with V-terminal from one side and screw terminal from opposite side - fuse base PBD 2-1V,
  - with both sides V-terminals - fuse base PBD 2-2V.
- size 3 – 630 A
  - with double side screw terminals for lug terminal - fuse base PBD 3.

V-terminals with V-clamps enable connection of circular or sector-shaped conductors.



PBD 1-2V

PBD 2-1V

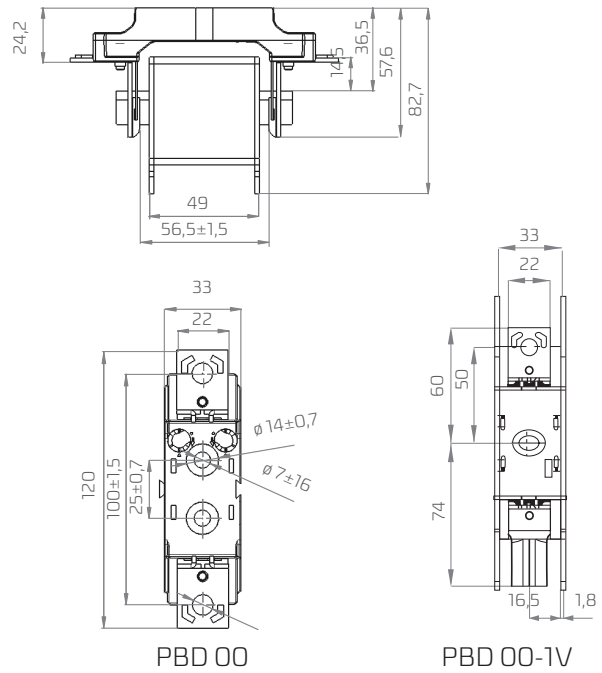
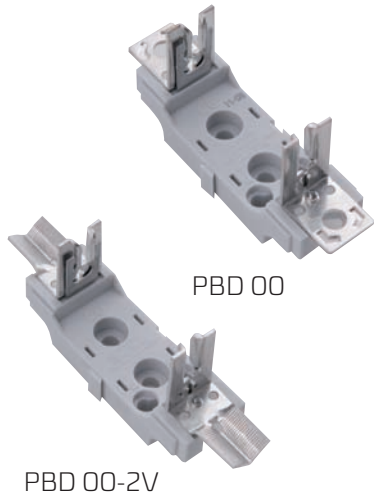
PBD 3

PBD 003 HH

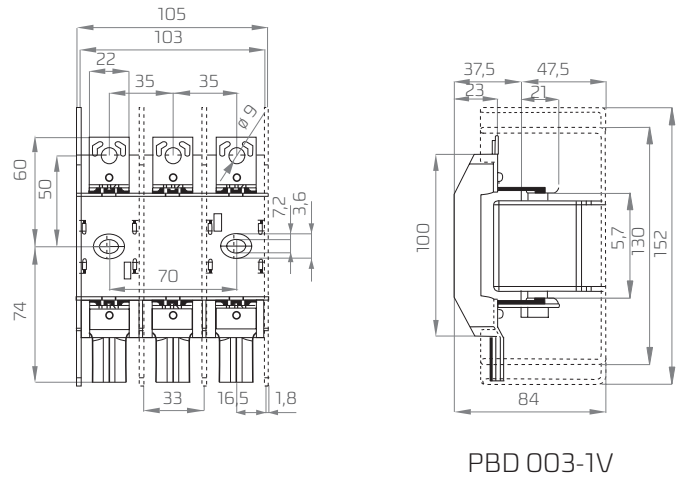
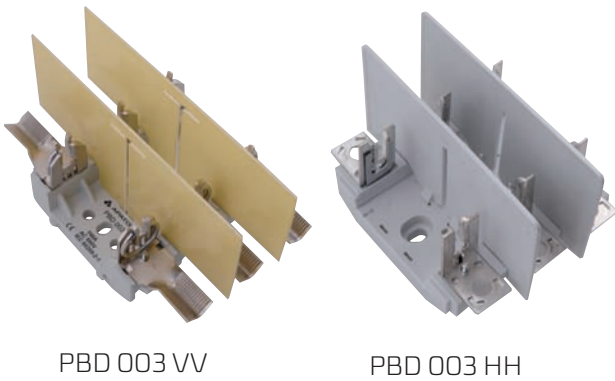
PBD 003 VV

# DIMENSIONS OF PBD FUSE BASES

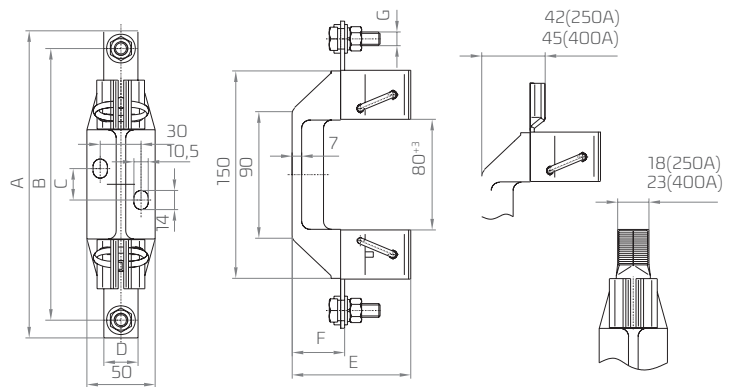
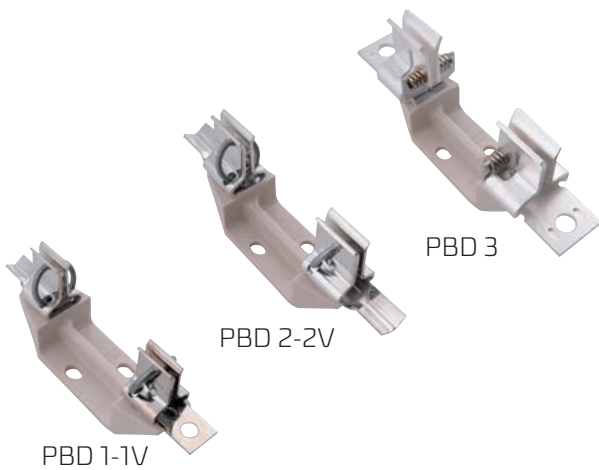
## PBD fuse bases of size 00 - 1 - pole



## PBD fuse bases of size 00 - 3 - pole

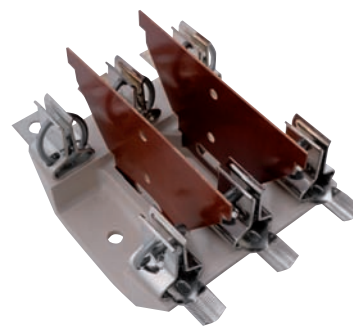
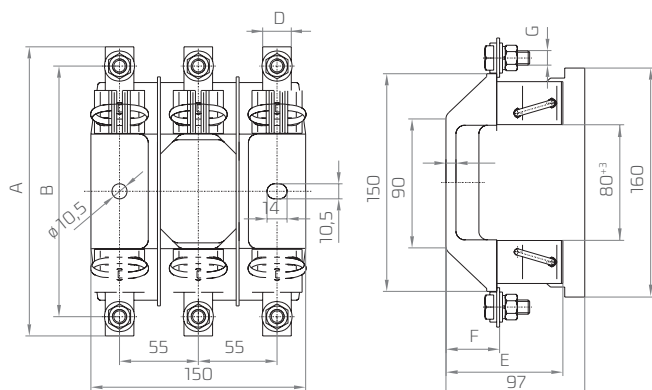


## PBD fuse bases of size 1, 2, 3 - 1 - pole



Article	Dimension [mm]						
	A	B	C	D	E	F	G
PBD 1	200	175	23	25	82	37	M10
PBD 1-1V	200	-	23	25	82	37	M10
PBD 1-2V	200	-	23	-	82	-	-
PBD 2	225	200	23	25	88	38	M10
PBD 2-1V	225	-	23	25	88	38	M10
PBD 2-2V	225	-	23	-	88	-	-
PBD 3	240	210	23	40	95	39	M12

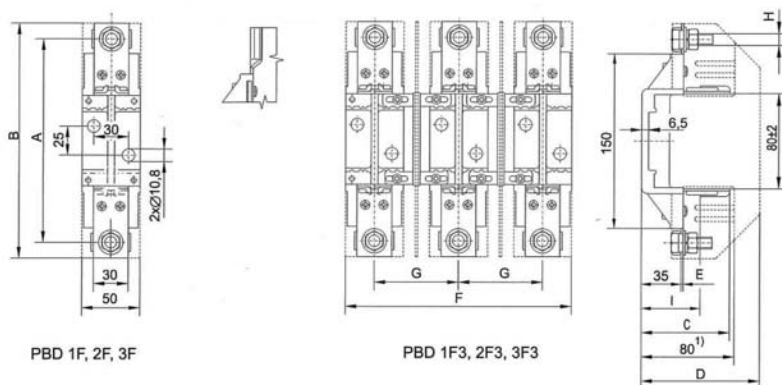
### PBD fuse bases of size 1, 2, 3 - 3 - poles



PBD 13-1V

Article	Dimension [mm]						
	A	B	C	D	E	F	G
PBD 13	200	175	-	-	82	37	M10
PBD 13-1V	-	-	-	-	82	37	M10
PBD 13-2V	-	-	-	-	82	-	-

### PBD F fuse bases of size 1, 2, 3 - 1 pole and 3 poles



PBD 1F, 2F, 3F

PBD 1F3, 2F3, 3F3

Article No.	Article	Dimension [mm]								
		A	B	C	D	E	F	G	H	I
63-822369-011	PBD 1F	175	202	76	-	2	-	-	M10	48
63-822369-021	PBD 1F3				102		165	57,5		
63-822266-011	PBD 2F	200	230	84	-	2,5	-	-	M12	50,5
63-822266-021	PBD 2F3				110		180	65		
63-822268-011	PBD 3F	210	238	93	-	5	-	-	M12	50,5
63-822268-021	PBD 3F3				126		210	80		