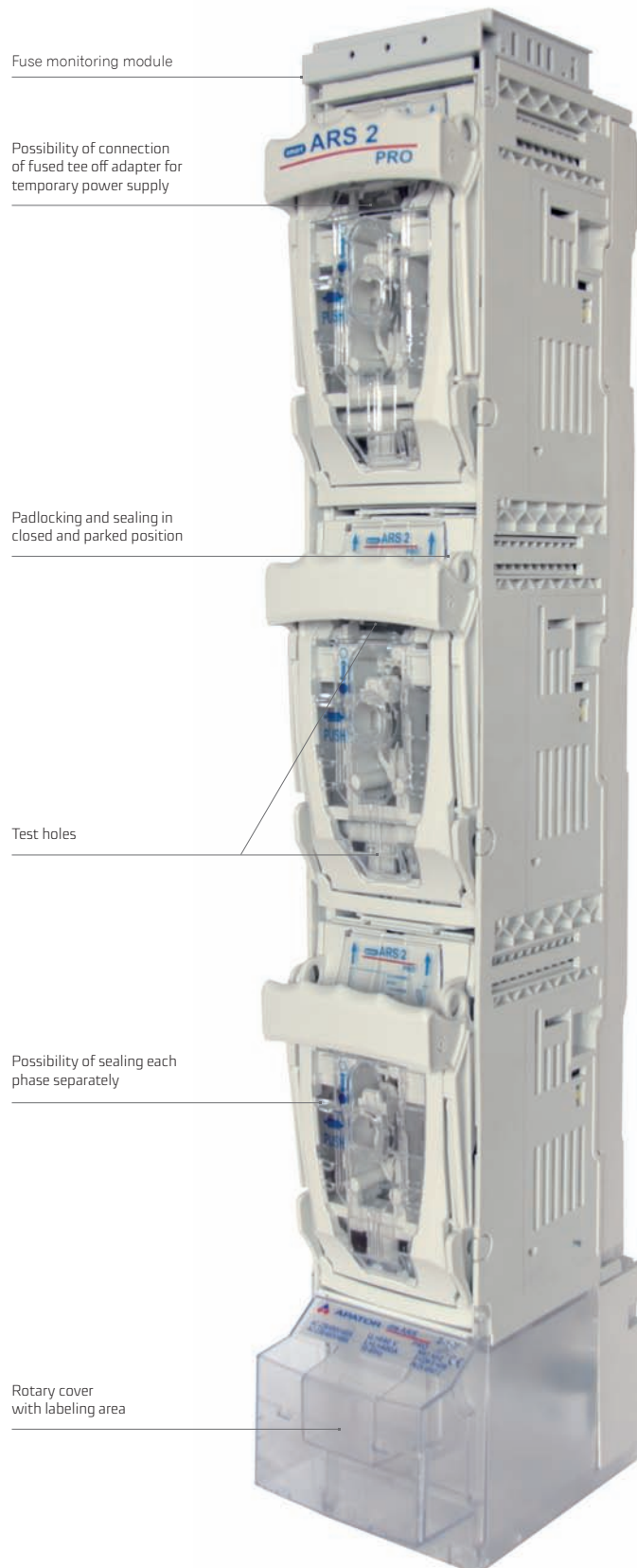


**FUSE SWITCH DISCONNECTOR** smartARS 2 pro (400 A, 690 V)  
smartARS 3 pro (630 A, 690 V)

For installation on to 185 mm busbar system

Fuse switch disconnector's width 100 mm

3- pole switching - 3 phases simultaneously or 1-pole switching - each phase separately



## FUSE SWITCH DISCONNECTOR smartARS pro with lateral busbar terminals

(separation, coupling of busbar systems)



smartARS 2-1-NR pro

Table 11. Technical data

Parameter			smartARS 2 pro	smartARS 3 pro
Rated thermal current $I_{th}$ with fuse links	A		400	630
Rated voltage $U_n$	V		690	690
Utilization category	690 V	-	AC-22B	AC-21B
	500 V			AC-22B
	400 V		AC-23B	-
Rated switching current $I_e$	A		400	630
Rated short circuit making current	600 V	kA	100	80
	500 V		120	120
	400 V			
Rated short circuit withstand current	600 V	kA	100	80
	500 V		120	120
	400 V			
Rated insulation voltage $U_i$	V		1000	1000
Rated impulse withstand voltage $U_{imp}$	kV		12	12
Rated frequency	Hz		50-60	50-60
Mechanical durability	Number of cycles		1000	1000
Electrical durability		200	200	
IP degree of protection	-		30	30
Fuse links size	-		1,2	3

Accessories on page 54, 55

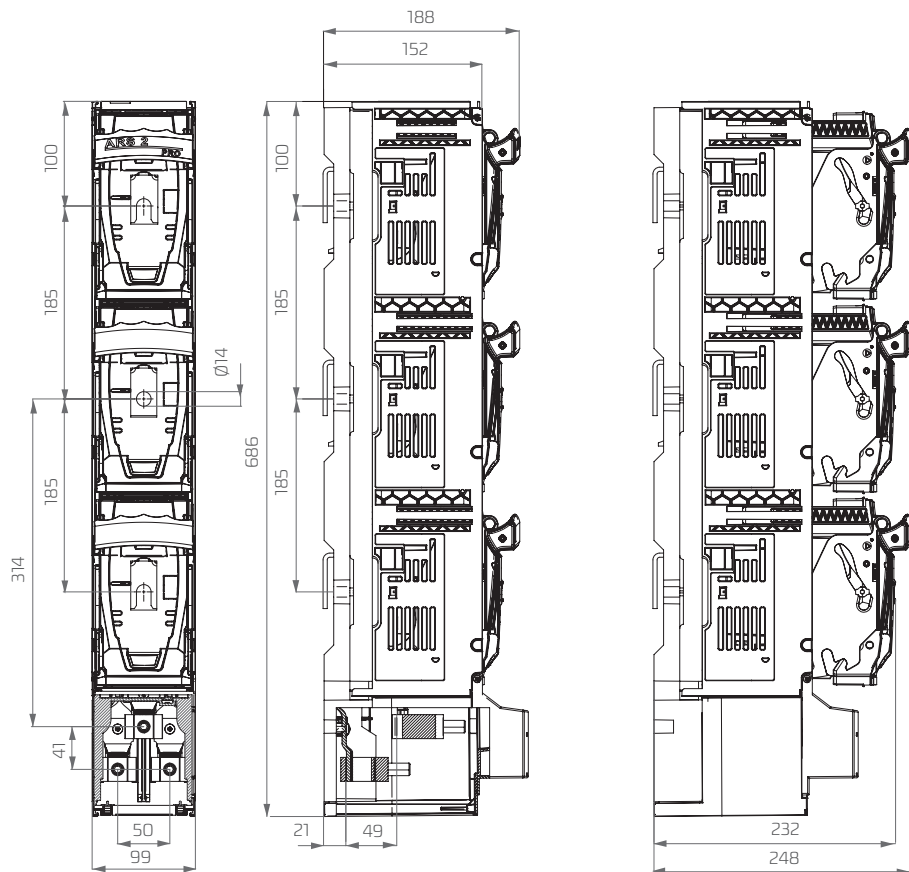
Table 12. Versions with lateral busbar terminals

Version		Weight	Article No.
<b>Fuse switch disconnectors smartARS 2 pro - 400A</b>			
<b>for installation on 185 mm busbar system, ONE POLE SWITCHING - each phase independently</b>			
smartARS 2-1 NL pro	cable terminals: screw terminals : pressed nuts M12; lateral busbar terminals - left side	5,1 kg	63-002045-001
smartARS 2-1 NR pro	cable terminals: screw terminals : pressed nuts M12; lateral busbar terminals - right side	5,1 kg	63-002045-003
<b>for installation on 185 mm busbar system, THREE POLE SWITCHING - all phases simultaneously</b>			
smartARS 2-6 NL pro	cable terminals: screw terminals : pressed nuts M12; lateral busbar terminals - left side	5,1 kg	63-002046-001
smartARS 2-6 NR pro	cable terminals: screw terminals : pressed nuts M12; lateral busbar terminals - right side	5,1 kg	63-002046-003
<b>Fuse switch disconnectors smartARS 3 pro - 630 A</b>			
<b>for installation on 185 mm busbar system, ONE POLE SWITCHING - each phase independently</b>			
smartARS 3-1 NL pro	cable terminals: screw terminals : pressed nuts M12; lateral busbar terminals - left side	5,9 kg	63-002045-002
smartARS 3-1 NR pro	cable terminals: screw terminals : pressed nuts M12; lateral busbar terminals - right side	5,9 kg	63-002045-004
<b>for installation on 185 mm busbar system, THREE POLE SWITCHING - all phases simultaneously</b>			
smartARS 3-6 NL pro	cable terminals: screw terminals : pressed nuts M12; lateral busbar terminals - left side	5,9 kg	63-002046-002
smartARS 3-6 NR pro	cable terminals: screw terminals : pressed nuts M12; lateral busbar terminals - right side	5,9 kg	63-002046-004

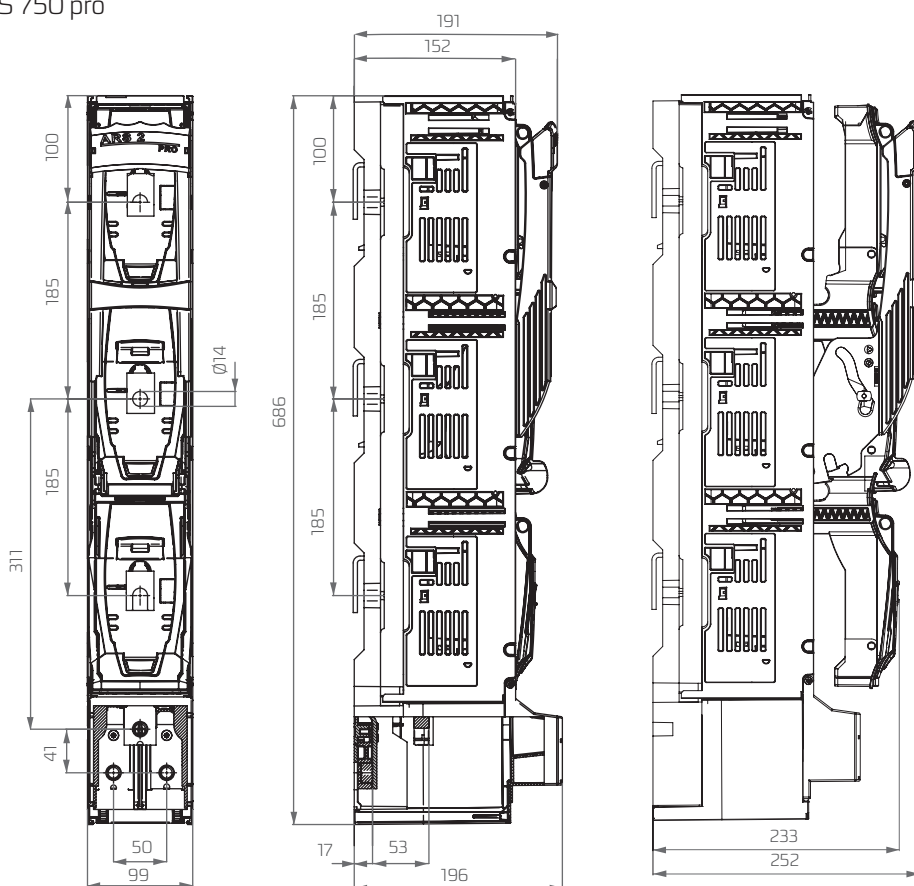
Table 13. smartARS 2,3 pro with lateral busbar terminals - terminal clamps

Description	smartARS 2-x-NL pro	smartARS 2-x-NR pro	smartARS 3-x-NL pro	smartARS 3-x-NR pro
Clamp	screw M12	screw M12	screw M12	screw M12
Picture of clamp				
Lateral busbar terminals	Left side	Right side	Left side	Right side
Tightening torque	56 Nm	56 Nm	56 Nm	56 Nm

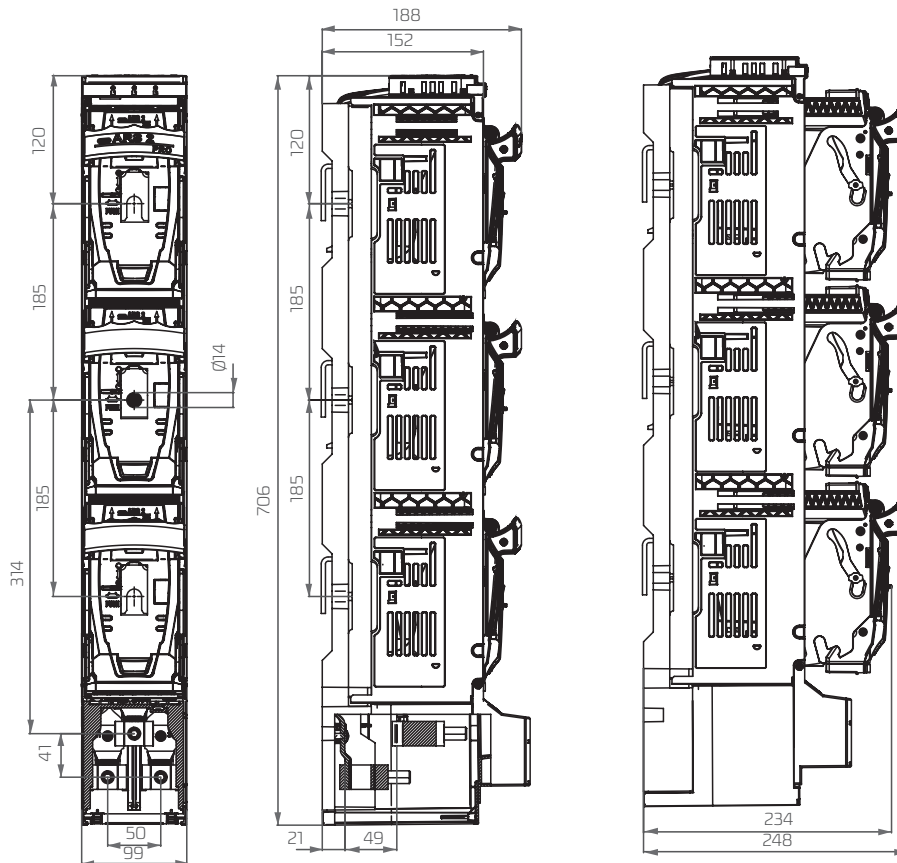
smartARS 2 pro, smartARS 3 pro (without fuse monitoring module)  
1-phase



smartARS 2 pro, smartARS 3 pro (without fuse monitoring module)  
RWS 600 pro, RWS 750 pro  
3-phase



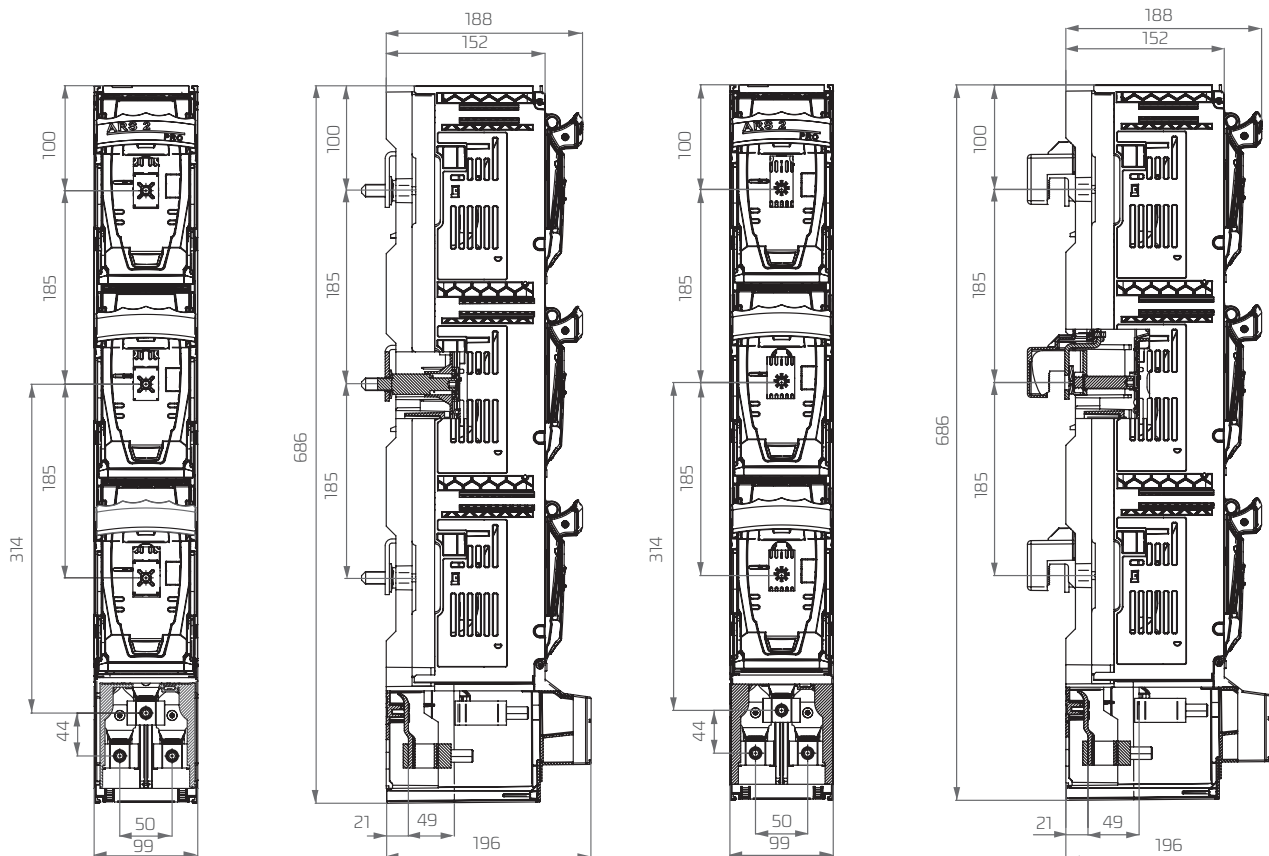
smartARS 2 pro, smartARS 3 pro with fuse monitoring module



ARS OVERALL DIMENSIONS

smartARS 2 pro, smartARS 3 pro equipped with modules for fast and safe installation using PPN technology

FAST INSTALLATION MODULES EQUIPPED WITH SCREWS    FAST INSTALLATION MODULES EQUIPPED WITH HOOKED CLAMPS



smartARS 2 pro, smartARS 3 pro with lateral busbar terminals

