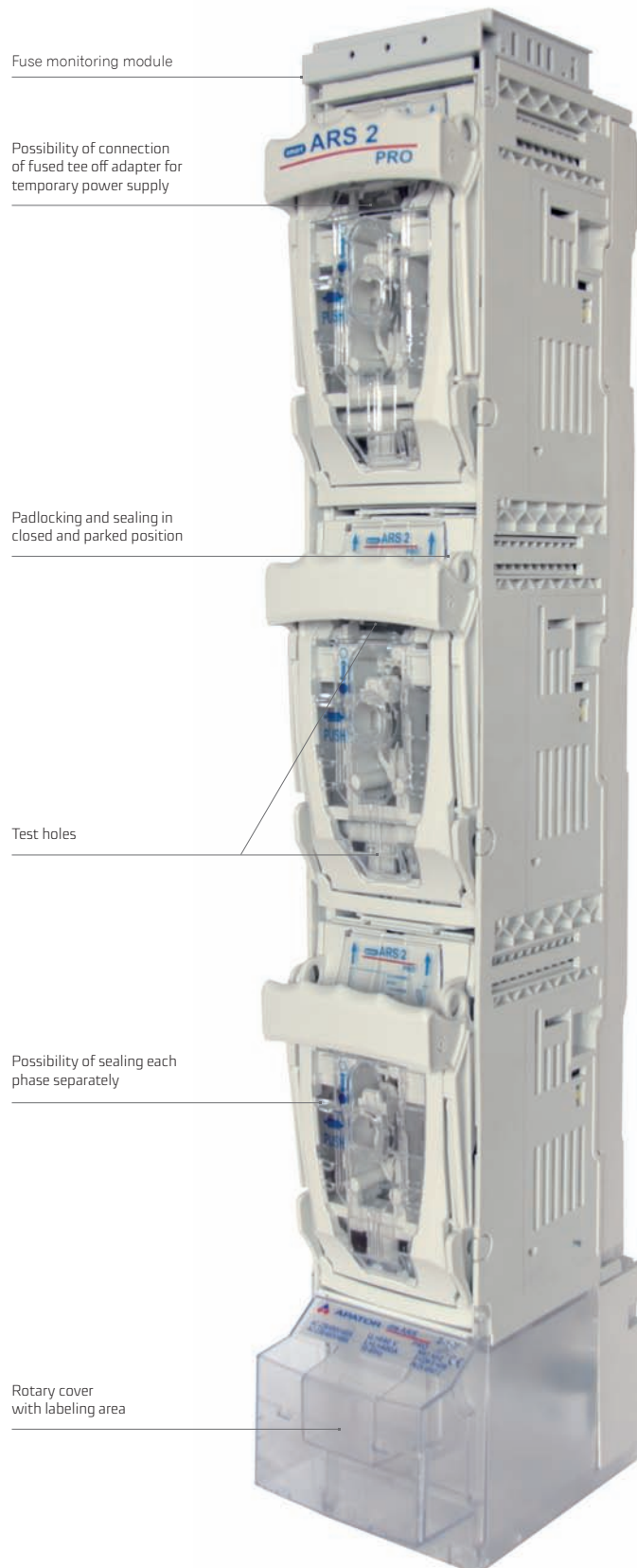


**FUSE SWITCH DISCONNECTOR** smartARS 2 pro (400 A, 690 V)  
smartARS 3 pro (630 A, 690 V)

For installation on to 185 mm busbar system

Fuse switch disconnectors' width 100 mm

3- pole switching - 3 phases simultaneously or 1-pole switching - each phase separately



## FUSE SWITCH DISCONNECTOR smartARS pro with lateral busbar terminals

(separation, coupling of busbar systems)



smartARS 2-1-NR pro

Table 11. Technical data

| Parameter                                      |                  |     | smartARS 2 pro | smartARS 3 pro |
|------------------------------------------------|------------------|-----|----------------|----------------|
| Rated thermal current $I_{th}$ with fuse links | A                |     | 400            | 630            |
| Rated voltage $U_n$                            | V                |     | 690            | 690            |
| Utilization category                           | 690 V            | -   | AC-22B         | AC-21B         |
|                                                | 500 V            |     |                | AC-22B         |
|                                                | 400 V            |     | AC-23B         | -              |
| Rated switching current $I_e$                  | A                |     | 400            | 630            |
| Rated short circuit making current             | 600 V            | kA  | 100            | 80             |
|                                                | 500 V            |     | 120            | 120            |
|                                                | 400 V            |     |                |                |
| Rated short circuit withstand current          | 600 V            | kA  | 100            | 80             |
|                                                | 500 V            |     | 120            | 120            |
|                                                | 400 V            |     |                |                |
| Rated insulation voltage $U_i$                 | V                |     | 1000           | 1000           |
| Rated impulse withstand voltage $U_{imp}$      | kV               |     | 12             | 12             |
| Rated frequency                                | Hz               |     | 50-60          | 50-60          |
| Mechanical durability                          | Number of cycles |     | 1000           | 1000           |
| Electrical durability                          |                  | 200 | 200            |                |
| IP degree of protection                        | -                |     | 30             | 30             |
| Fuse links size                                | -                |     | 1,2            | 3              |

Accessories on page 54, 55

Table 12. Versions with lateral busbar terminals

| Version                                                                                           |                                                                                            | Weight | Article No.   |
|---------------------------------------------------------------------------------------------------|--------------------------------------------------------------------------------------------|--------|---------------|
| <b>Fuse switch disconnectors smartARS 2 pro - 400A</b>                                            |                                                                                            |        |               |
| <b>for installation on 185 mm busbar system, ONE POLE SWITCHING - each phase independently</b>    |                                                                                            |        |               |
| smartARS 2-1 NL pro                                                                               | cable terminals: screw terminals : pressed nuts M12; lateral busbar terminals - left side  | 5,1 kg | 63-002045-001 |
| smartARS 2-1 NR pro                                                                               | cable terminals: screw terminals : pressed nuts M12; lateral busbar terminals - right side | 5,1 kg | 63-002045-003 |
| <b>for installation on 185 mm busbar system, THREE POLE SWITCHING - all phases simultaneously</b> |                                                                                            |        |               |
| smartARS 2-6 NL pro                                                                               | cable terminals: screw terminals : pressed nuts M12; lateral busbar terminals - left side  | 5,1 kg | 63-002046-001 |
| smartARS 2-6 NR pro                                                                               | cable terminals: screw terminals : pressed nuts M12; lateral busbar terminals - right side | 5,1 kg | 63-002046-003 |
| <b>Fuse switch disconnectors smartARS 3 pro - 630 A</b>                                           |                                                                                            |        |               |
| <b>for installation on 185 mm busbar system, ONE POLE SWITCHING - each phase independently</b>    |                                                                                            |        |               |
| smartARS 3-1 NL pro                                                                               | cable terminals: screw terminals : pressed nuts M12; lateral busbar terminals - left side  | 5,9 kg | 63-002045-002 |
| smartARS 3-1 NR pro                                                                               | cable terminals: screw terminals : pressed nuts M12; lateral busbar terminals - right side | 5,9 kg | 63-002045-004 |
| <b>for installation on 185 mm busbar system, THREE POLE SWITCHING - all phases simultaneously</b> |                                                                                            |        |               |
| smartARS 3-6 NL pro                                                                               | cable terminals: screw terminals : pressed nuts M12; lateral busbar terminals - left side  | 5,9 kg | 63-002046-002 |
| smartARS 3-6 NR pro                                                                               | cable terminals: screw terminals : pressed nuts M12; lateral busbar terminals - right side | 5,9 kg | 63-002046-004 |

Table 13. smartARS 2,3 pro with lateral busbar terminals - terminal clamps

| Description              | smartARS 2-x-NL pro | smartARS 2-x-NR pro | smartARS 3-x-NL pro | smartARS 3-x-NR pro |
|--------------------------|---------------------|---------------------|---------------------|---------------------|
| Clamp                    | screw M12           | screw M12           | screw M12           | screw M12           |
| Picture of clamp         |                     |                     |                     |                     |
| Lateral busbar terminals | Left side           | Right side          | Left side           | Right side          |
| Tightening torque        | 56 Nm               | 56 Nm               | 56 Nm               | 56 Nm               |

## Fuse monitoring module

The fuse switch disconnecter can be equipped with device that allows indication of the current state of the fuse links. Information about fuse link burnout, correct operation or power failure are indicated by diode light signal or can be transferred to any automation protection system, through the relay contacts.

### Description of operation of the fuse monitoring module

- diode is green - correct operation, fuse link works correctly
- diode is red - failure, fuse link operated
- diode is red; blinking - phase shift (another phase voltage was detected at the fuse link outgoing contact)
- diodes off - module switched off / no power supply

### Nominal parameters

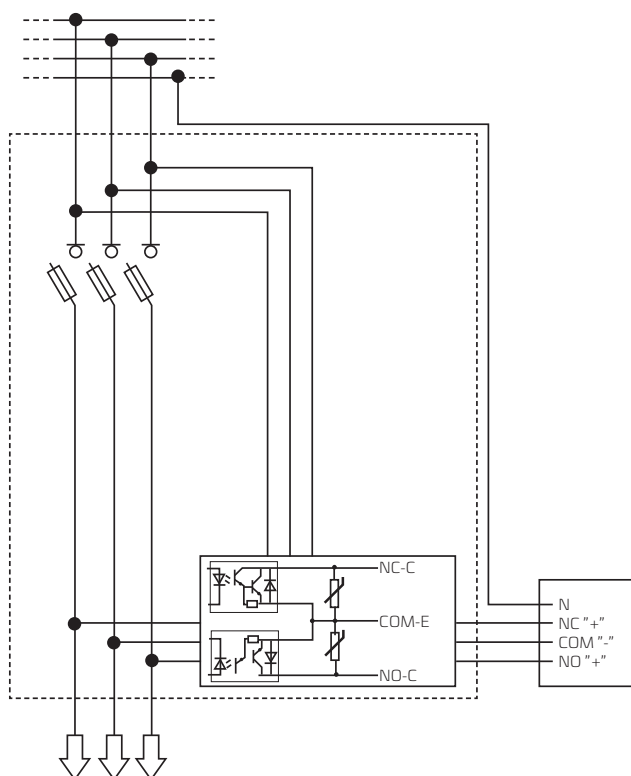
- |                                                               |             |
|---------------------------------------------------------------|-------------|
| • Voltage value for cable test                                | 2,5 kV DC   |
| • Minimum operating voltage                                   | 200 V       |
| • Maximum operating voltage                                   | 690 V       |
| • $U_{imp}$ impulse withstand voltage with operated fuse link | 4 kV        |
| • $U_{imp}$ between phases                                    | 4 kV        |
| • $U_{imp}$ between main circuit / relay contacts             | 3,5 kV      |
| • Temperature range                                           | -40...+85°C |
| • Rated insulation voltage $U_i$                              | 1000 V      |



smartARS 2-1-M-X pro smartARS 00-1-V-X-E pro

### Module outputs:

- |                             |         |
|-----------------------------|---------|
| • Rated current             | 100 mA  |
| • Maximum switching voltage | 50 V DC |

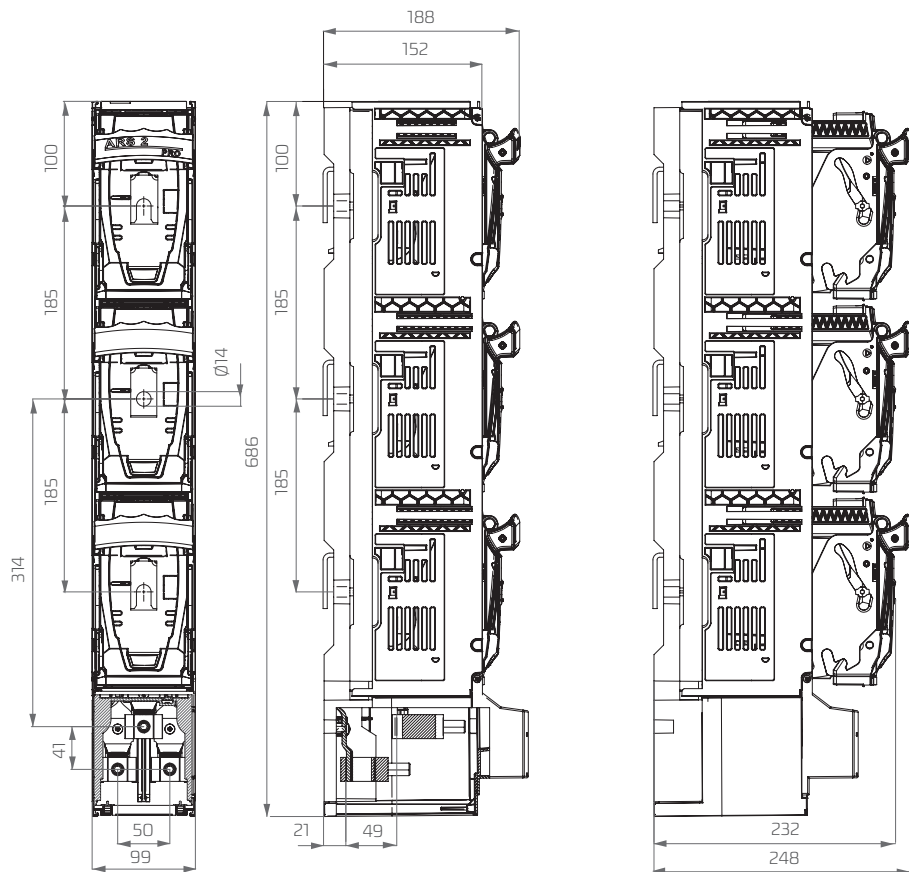


| Fuse links state (resultant) | output NO | output NC | diode colour |
|------------------------------|-----------|-----------|--------------|
| correct operation            | „0” (0V)  | „1” (24V) | green        |
| failure                      | „1” (24V) | „0” (0V)  | red          |

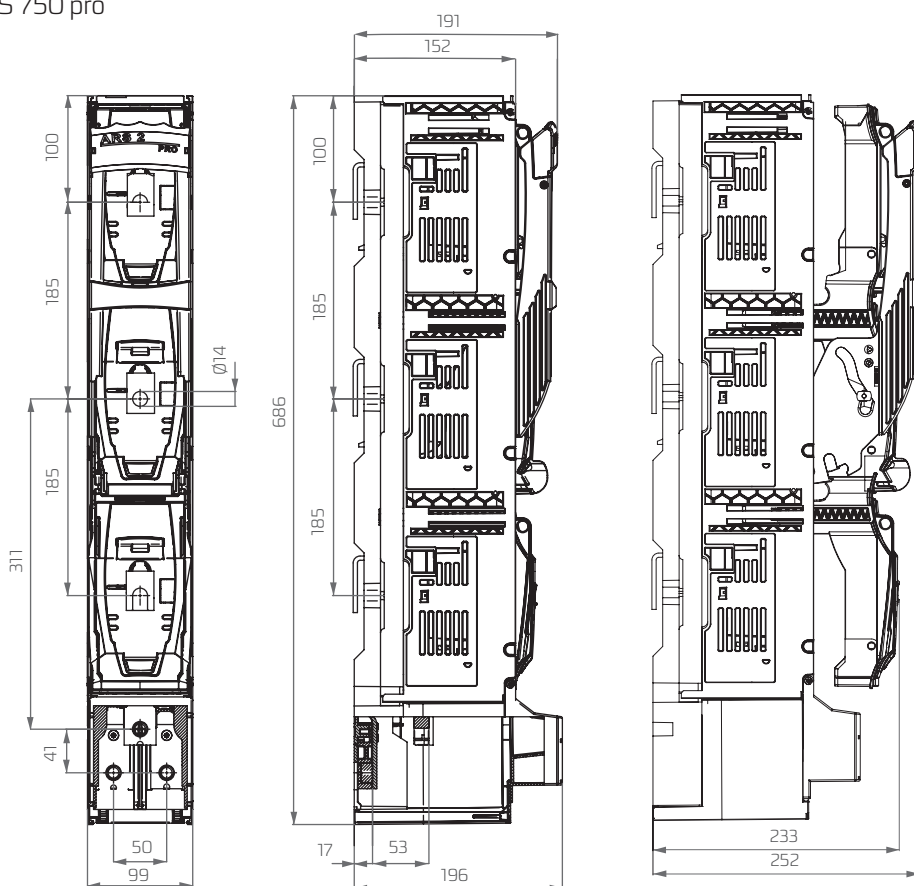
The transport outputs can be supplied with a DC voltage of up to 50 V with current limitation to max. 100mA

Minus should be connected directly to the common terminal, outputs should be connected through the load to the plus.

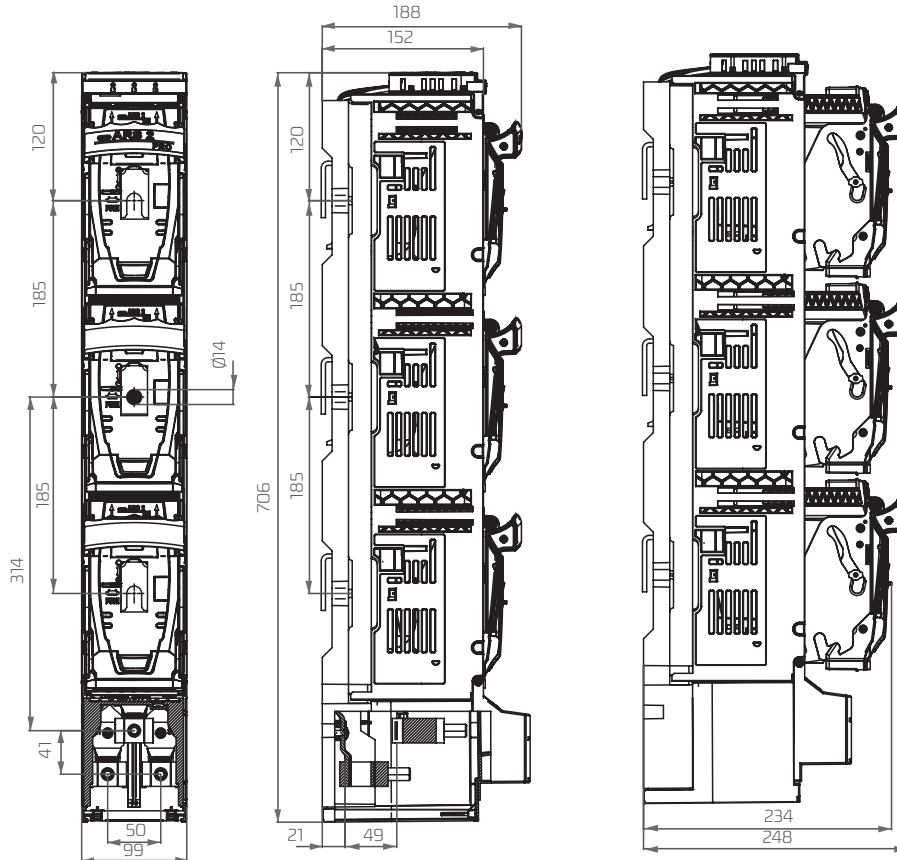
smartARS 2 pro, smartARS 3 pro (without fuse monitoring module)  
1-phase



smartARS 2 pro, smartARS 3 pro (without fuse monitoring module)  
RWS 600 pro, RWS 750 pro  
3-phase



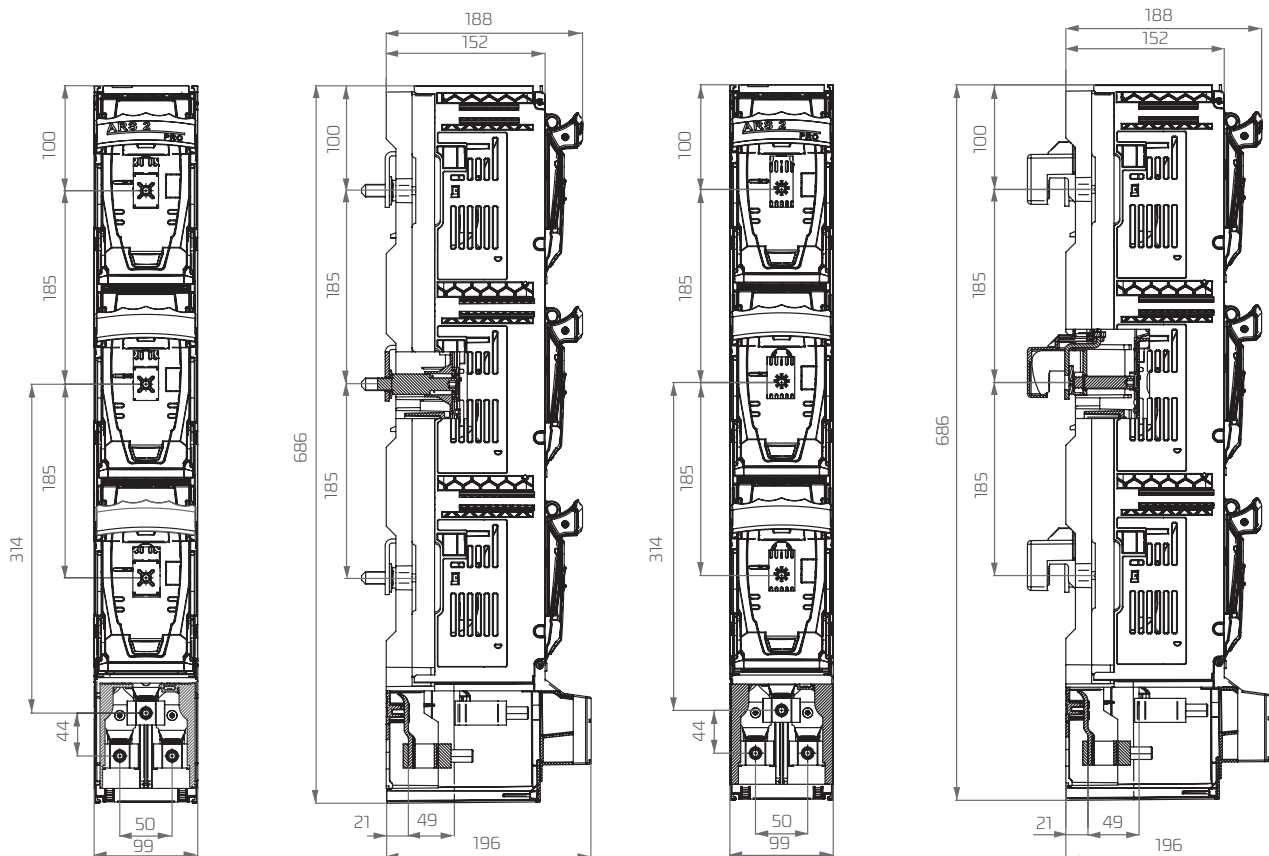
smartARS 2 pro, smartARS 3 pro with fuse monitoring module



ARS OVERALL DIMENSIONS

smartARS 2 pro, smartARS 3 pro equipped with modules for fast and safe installation using PPN technology

FAST INSTALLATION MODULES EQUIPPED WITH SCREWS    FAST INSTALLATION MODULES EQUIPPED WITH HOOKED CLAMPS



smartARS 2 pro, smartARS 3 pro with lateral busbar terminals

ARS OVERALL DIMENSIONS

