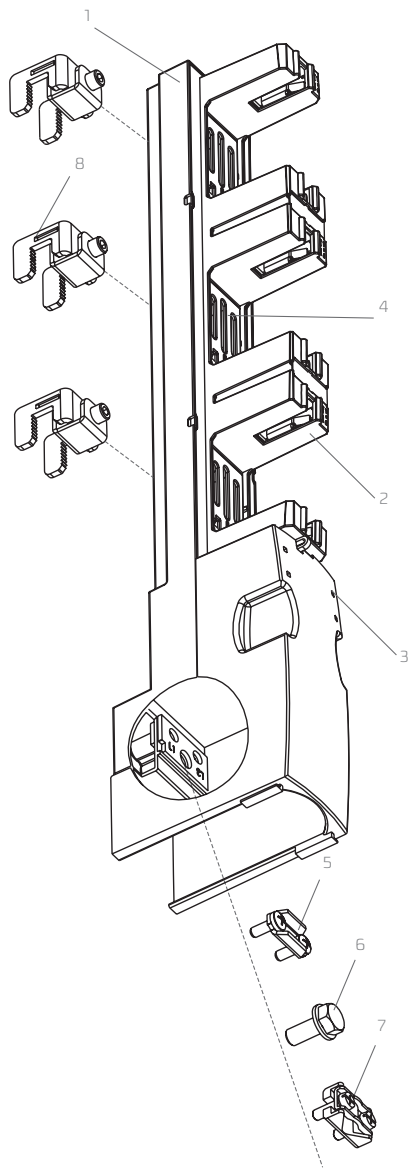


FUSE RAIL PBS 00/100 mm (160 A, 690 V)

For 100 mm busbar system



DESCRIPTION

1. Main base
2. Protective contact cover
3. Terminal shroud
4. Busbar terminals acces covers
5. S-bridge clamp
6. M8 screw
7. V-shape clamp for sector-shaped conductor
8. Hooked clamp

Place of installing
insulating barrier

Place of installing clip
with description label

Terminal shroud label



PBS 00/100 mm

FUSE RAIL PBS 00 (160 A, 690 V)

For 185 mm busbar system

Table 63. Technical data

Parameter	PBS 00	
Size	00	
Rated thermal current I_{th}	A	160
Rated voltage U_n	V	690
Rated insulation voltage U_i	V	1000
Rated frequency	Hz	50-60
Rated power dissipation	W	12
Rated short-circuit withstand current	kA	100
Mechanical durability	Number of cycles	100
IP degree of protection without fuse links installed	-	20
IP degree of protection with fuse links and fuse links shrouds installed *	-	20
Size of fuse links	00	

Accessories on page 69, 70

*for more information about fuse links shrouds please see accessories



PBS 00-V

PBS 00-V-O

PBS 00-SM

Table 64. Versions

Version		Weight	Article No.
PBS 00-V	cable terminals: V-terminals with V-clamps 25-150SW	2 kg	63-001417-001
PBS 00-SM	cable terminals: bridge terminals with bridgeclamps (S) 4-70 mm ² , screw terminals with M8 screws	1,9 kg	63-001417-002
PBS 00-V-O	cable terminals: V-terminals with V-clamps 25-150SW with fuse link shrouds	2,1 kg	63-001417-003
PBS 00-SM-O	cable terminals: bridge terminals with bridgeclamps (S) 4-70 mm ² , screw terminals with M8 screws with fuse link shrouds	2 kg	63-001417-004

Table 65. PBS 00 terminal clamps

Description	PBS 00			
Clamp	S-bridge clamp 2 x M5 x 25	M8 screw*	V- clamp 25-150 SW	HM 10-120
Picture of clamp				
Drawing of clamp				
Cross-section of conductors	4 - 70 mm ²	Conductor with lug terminal max 185 mm ²	re ● 16 mm ² - 95 mm ² se ◆ 25 mm ² - 150 mm ² rm ⊗ 16 mm ² - 95 mm ² sm ⊕ 25 mm ² - 150 mm ²	re ● 10 mm ² - 70 mm ² se ◆ 25 mm ² - 120 mm ² rm ⊗ 10 mm ² - 70 mm ² sm ⊕ 25 mm ² - 95 mm ²
Tightening torque	3 Nm**	12 Nm**	20 Nm**	15 Nm**

For stranded conductors using cable ferrules is recommended

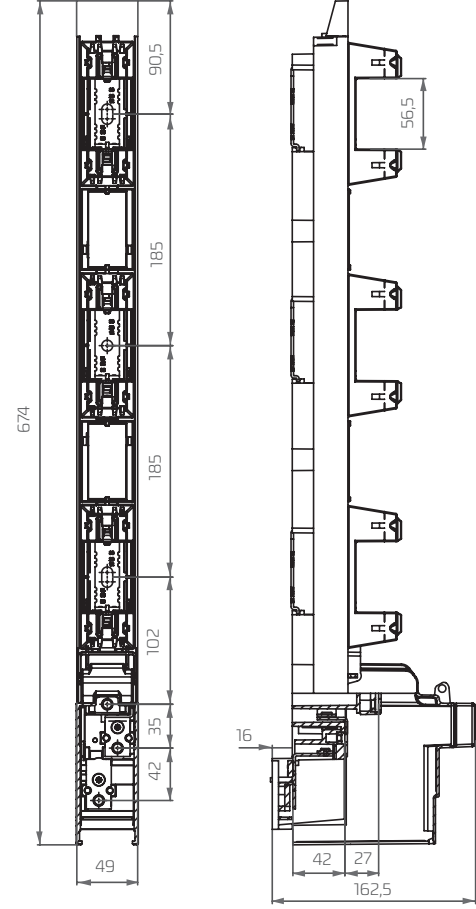
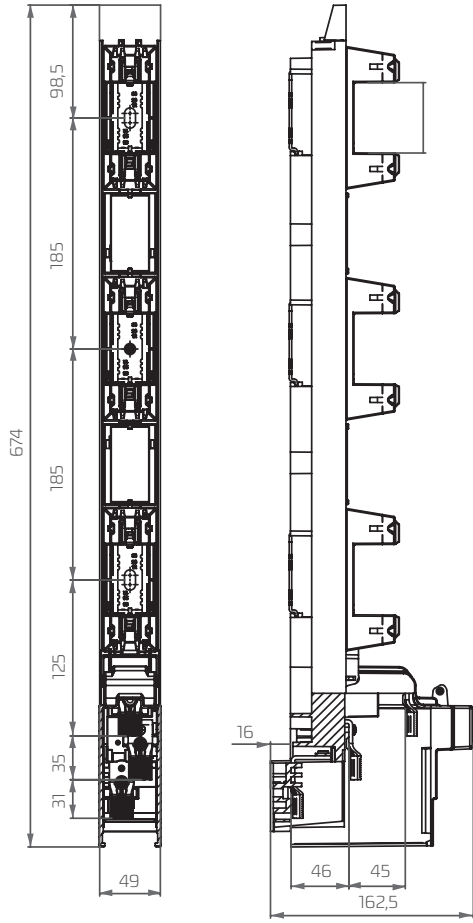
*) bars of maximum width of 20 mm and maximum thickness of 5 mm can be fixed to M type screw terminals

**) using tension wrench is recommended

***) fuse switch disconnectors with V-terminals are equipped with steel V-clamp HM 10-120 on request

Apator takes responsibility for technical quality of V-terminals manufactured only by the company. Minimum tightening torque (M8 screw) for screws fixing fuse switch disconnector to busbar system – 12 Nm, recommended tightening torque for screws and nuts with property class 8.8 – 21 Nm.

PBS 00-SM



PBS 2 | PBS 3

