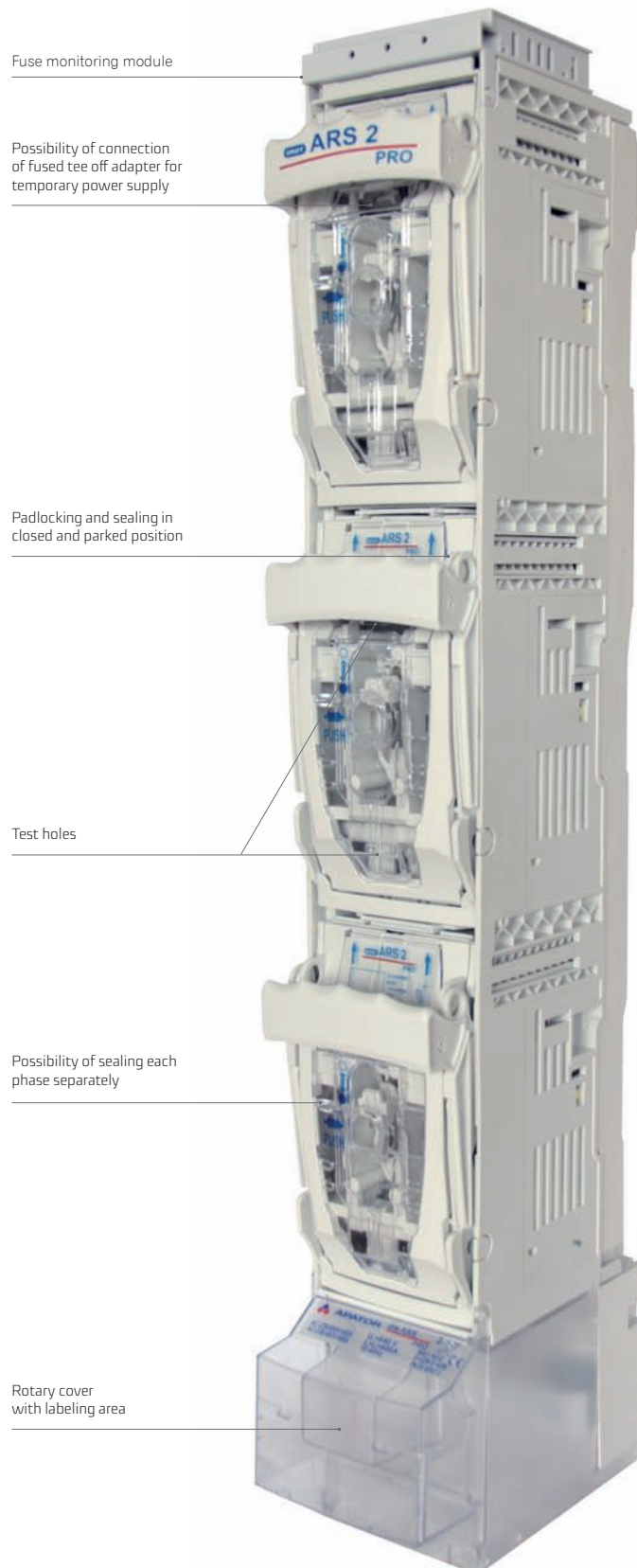


**FUSE SWITCH DISCONNECTOR** smartARS 2 pro (400 A, 690 V)  
smartARS 3 pro (630 A, 690 V)

For installation on to 185 mm busbar system

Fuse switch disconnectors' width 100 mm

3- pole switching - 3 phases simultaneously or 1-pole switching - each phase separately



## FUSE SWITCH DISCONNECTOR smartARS pro with lateral busbar terminals

(separation, coupling of busbar systems)



smartARS 2-1-NR pro

Table 11. Technical data

Parameter			smartARS 2 pro	smartARS 3 pro
Rated thermal current $I_{th}$ with fuse links	A		400	630
Rated voltage $U_n$	V		690	690
Utilization category	690 V	-	AC-22B	AC-21B
	500 V			AC-22B
	400 V		AC-23B	-
Rated switching current $I_e$	A		400	630
Rated short circuit making current	600 V	kA	100	80
	500 V		120	120
	400 V		120	120
Rated short circuit withstand current	600 V	kA	100	80
	500 V		120	120
	400 V		120	120
Rated insulation voltage $U_i$	V		1000	1000
Rated impulse withstand voltage $U_{imp}$	kV		12	12
Rated frequency	Hz		50-60	50-60
Mechanical durability	Number of cycles		1000	1000
Electrical durability		200	200	
IP degree of protection	-		30	30
Fuse links size	-		1,2	3

Accessories on page 54, 55

Table 12. Versions with lateral busbar terminals

Version		Weight	Article No.
<b>Fuse switch disconnectors smartARS 2 pro - 400A</b>			
<b>for installation on 185 mm busbar system, ONE POLE SWITCHING - each phase independently</b>			
smartARS 2-1 NL pro	cable terminals: screw terminals : pressed nuts M12; lateral busbar terminals - left side	5,1 kg	63-002045-001
smartARS 2-1 NR pro	cable terminals: screw terminals : pressed nuts M12; lateral busbar terminals - right side	5,1 kg	63-002045-003
<b>for installation on 185 mm busbar system, THREE POLE SWITCHING - all phases simultaneously</b>			
smartARS 2-6 NL pro	cable terminals: screw terminals : pressed nuts M12; lateral busbar terminals - left side	5,1 kg	63-002046-001
smartARS 2-6 NR pro	cable terminals: screw terminals : pressed nuts M12; lateral busbar terminals - right side	5,1 kg	63-002046-003
<b>Fuse switch disconnectors smartARS 3 pro - 630 A</b>			
<b>for installation on 185 mm busbar system, ONE POLE SWITCHING - each phase independently</b>			
smartARS 3-1 NL pro	cable terminals: screw terminals : pressed nuts M12; lateral busbar terminals - left side	5,9 kg	63-002045-002
smartARS 3-1 NR pro	cable terminals: screw terminals : pressed nuts M12; lateral busbar terminals - right side	5,9 kg	63-002045-004
<b>for installation on 185 mm busbar system, THREE POLE SWITCHING - all phases simultaneously</b>			
smartARS 3-6 NL pro	cable terminals: screw terminals : pressed nuts M12; lateral busbar terminals - left side	5,9 kg	63-002046-002
smartARS 3-6 NR pro	cable terminals: screw terminals : pressed nuts M12; lateral busbar terminals - right side	5,9 kg	63-002046-004

Table 13. smartARS 2,3 pro with lateral busbar terminals - terminal clamps

Description	smartARS 2-x-NL pro	smartARS 2-x-NR pro	smartARS 3-x-NL pro	smartARS 3-x-NR pro
Clamp	screw M12	screw M12	screw M12	screw M12
Picture of clamp				
Lateral busbar terminals	Left side	Right side	Left side	Right side
Tightening torque	56 Nm	56 Nm	56 Nm	56 Nm

## Fuse monitoring module

The fuse switch disconnecter can be equipped with device that allows indication of the current state of the fuse links. Information about fuse link burnout, correct operation or power failure are indicated by diode light signal or can be transferred to any automation protection system, through the relay contacts.

### Description of operation of the fuse monitoring module

- diode is green - correct operation, fuse link works correctly
- diode is red - failure, fuse link operated
- diode is red; blinking - phase shift (another phase voltage was detected at the fuse link outgoing contact)
- diodes off - module switched off / no power supply

### Nominal parameters

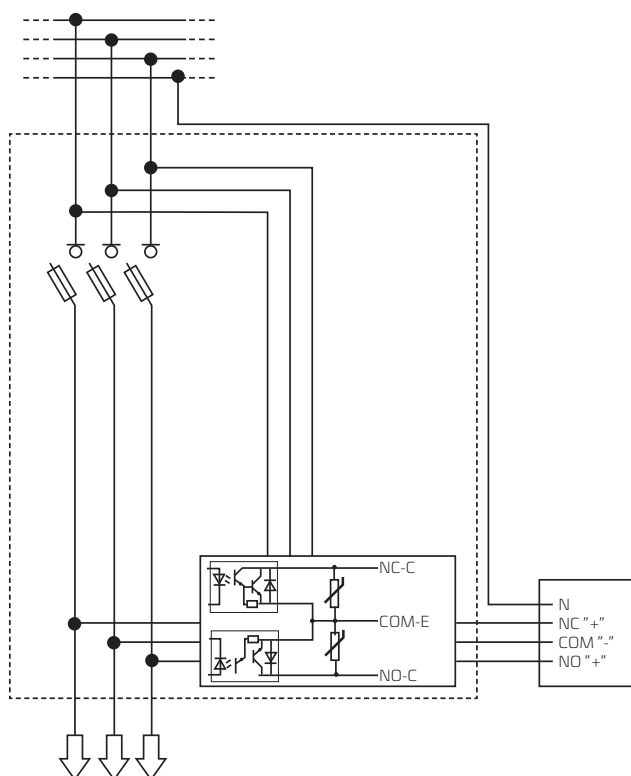
- |   |             |
|---|-------------|
| • Voltage value for cable test                                | 2,5 kV DC   |
| • Minimum operating voltage                                   | 200 V       |
| • Maximum operating voltage                                   | 690 V       |
| • $U_{imp}$ impulse withstand voltage with operated fuse link | 4 kV        |
| • $U_{imp}$ between phases                                    | 4 kV        |
| • $U_{imp}$ between main circuit / relay contacts             | 3,5 kV      |
| • Temperature range   | -40...+85°C |
| • Rated insulation voltage $U_i$                              | 1000 V      |



smartARS 2-1-M-X pro smartARS 00-1-V-X-E pro

### Module outputs:

- |                             |         |
|-----------------------------|---------|
| • Rated current             | 100 mA  |
| • Maximum switching voltage | 50 V DC |



Fuse links state (resultant)	output NO	output NC	diode colour
correct operation	„0” (0V)	„1” (24V)	green
failure	„1” (24V)	„0” (0V)	red

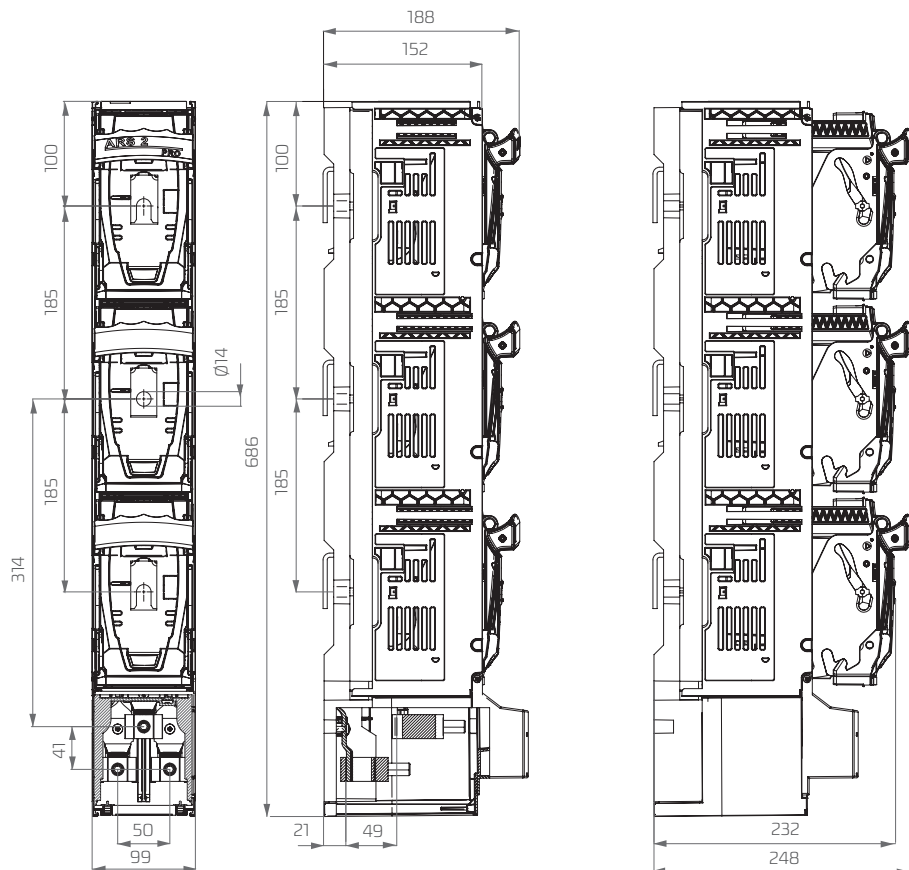
The transport outputs can be supplied with a DC voltage of up to 50 V with current limitation to max. 100mA

Minus should be connected directly to the common terminal, outputs should be connected through the load to the plus.

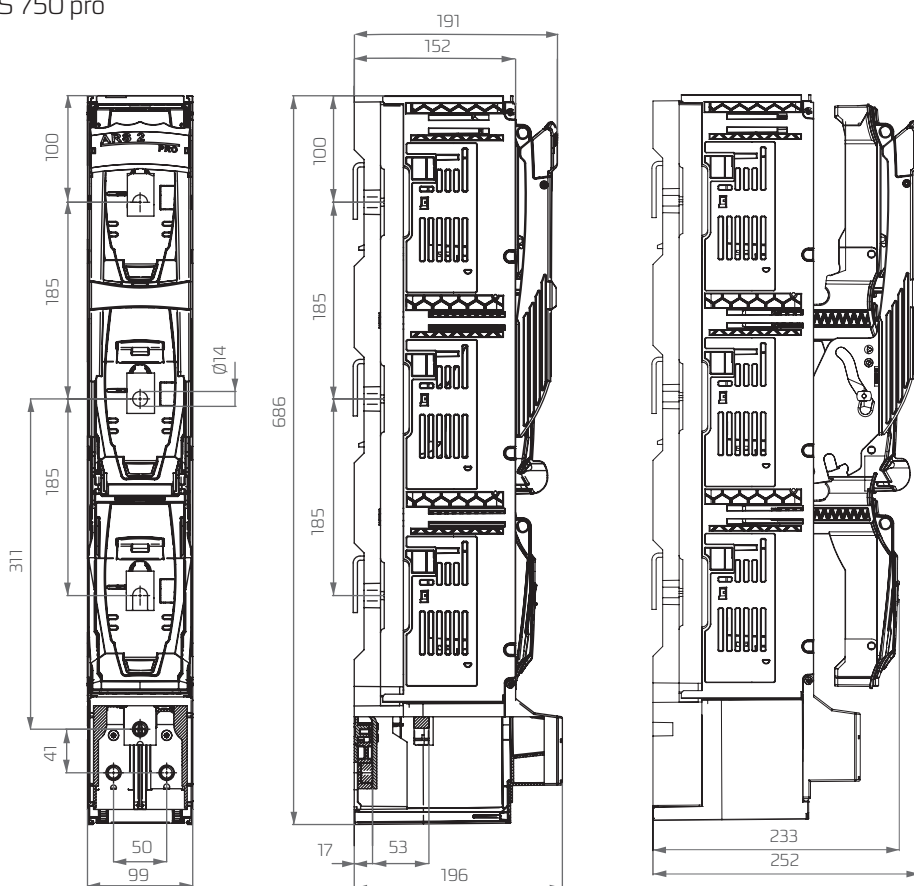
Table 14. Versions with electronic fuse monitoring module

Version	Weight	Article No.
<b>Fuse switch disconnectors smartARS 00 pro - 160A</b>		
<b>for installation on 185 mm busbar system, ONE POLE SWITCHING - each phase independently</b>		
smartARS 00-1-V-X-E pro cable terminals: V-terminals: V-clamps 25-150SW + hooked clamps	3,1 kg	63-001606-201
<b>Fuse switch disconnectors smartARS 2 pro - 400A</b>		
<b>for installation on 185 mm busbar system, ONE POLE SWITCHING - each phase independently</b>		
smartARS 2-1-V-X pro cable terminals: V-terminals: V-clamps 240 mm <sup>2</sup>	5,9 kg	63-001340-601
smartARS 2-1-M-X pro cable terminals: screw terminals: pressed nuts M12	5,8 kg	63-001340-603
smartARS 2-1-2V-X pro cable terminals: 2V-terminals: double V-clamps 240 mm <sup>2</sup>	6,5 kg	63-001340-605
smartARS 2-1-V-X-E pro cable terminals: V-terminals + M12 screws for fixing to busbar system	6,0 kg	63-811830-201
<b>for installation on 185 mm busbar system, THREE POLE SWITCHING - all phases simultaneously</b>		
smartARS 2-6-V-X pro cable terminals: V-terminals: V-clamps 240 mm <sup>2</sup>	5,9 kg	63-001341-601
smartARS 2-6-M-X pro cable terminals: screw terminals: pressed nuts M12	5,8 kg	63-001341-603
smartARS 2-6-2V-X pro cable terminals: 2V-terminals: double V-clamps 240 mm <sup>2</sup>	6,5 kg	63-001341-605
<b>smartARS 2 pro version equipped with modules for fast installation using PPN technology</b>		
<b>for installation on 185 mm busbar system, fast installation modules equipped with screws, ONE POLE SWITCHING - each phase independently</b>		
smartARS 2-1-V SM-X pro cable terminals: V-terminals: V-clamps 240 mm <sup>2</sup>	6,3 kg	63-001340-701
smartARS 2-1-M SM-X pro cable terminals: screw terminals: pressed nuts M12	6,2 kg	63-001340-703
smartARS 2-1-2V SM-X pro cable terminals: 2V-terminals: double V-clamps 240 mm <sup>2</sup>	6,9 kg	63-001340-705
<b>for installation on 185 mm busbar system, fast installation modules equipped with screws, THREE POLE SWITCHING - all phases simultaneously</b>		
smartARS 2-6-V SM-X pro cable terminals: V-terminals: V-clamps 240 mm <sup>2</sup>	6,5 kg	63-001341-701
smartARS 2-6-M SM-X pro cable terminals: screw terminals: pressed nuts M12	6,4 kg	63-001341-703
smartARS 2-6-2V SM-X pro cable terminals: 2V-terminals: double V-clamps 240 mm <sup>2</sup>	6,9 kg	63-001341-705
<b>for installation on 185 mm busbar system, fast installation modules equipped with hooked clamps, ONE POLE SWITCHING - each phase independently</b>		
smartARS 2-1-V SMH-X pro cable terminals: V-terminals: V-clamps 240 mm <sup>2</sup>	6,5 kg	63-001340-801
smartARS 2-1-M SMH-X pro cable terminals: screw terminals: pressed nuts M12	6,4 kg	3-001340-803
smartARS 2-1-2V SMH-X pro cable terminals: 2V-terminals: double V-clamps 240 mm <sup>2</sup>	6,9 kg	63-001340-805
<b>for installation on 185 mm busbar system, fast installation modules equipped with hooked clamps, THREE POLE SWITCHING - all phases simultaneously</b>		
smartARS 2-6-V SMH-X pro cable terminals: V-terminals: V-clamps 240 mm <sup>2</sup>	6,5 kg	63-001341-801
smartARS 2-6-M SMH-X pro cable terminals: screw terminals: pressed nuts M12	6,4 kg	63-001341-803
smartARS 2-6-2V SMH-X pro cable terminals: 2V-terminals: double V-clamps 240 mm <sup>2</sup>	6,9 kg	63-001341-805

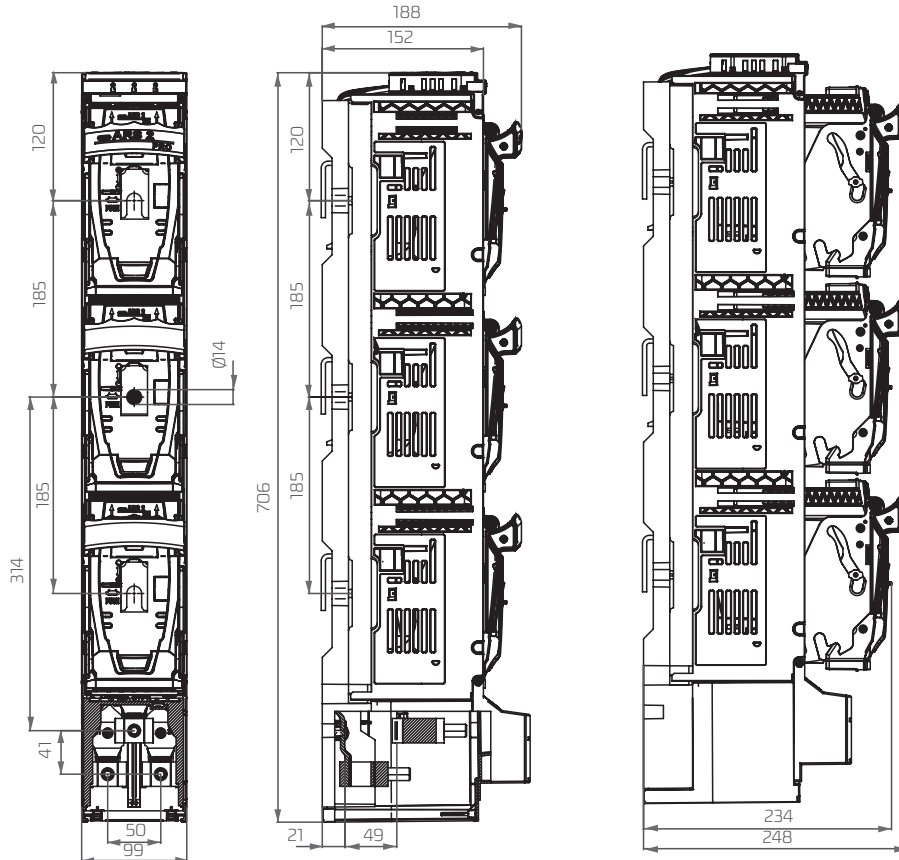
smartARS 2 pro, smartARS 3 pro (without fuse monitoring module)  
1-phase



smartARS 2 pro, smartARS 3 pro (without fuse monitoring module)  
RWS 600 pro, RWS 750 pro  
3-phase

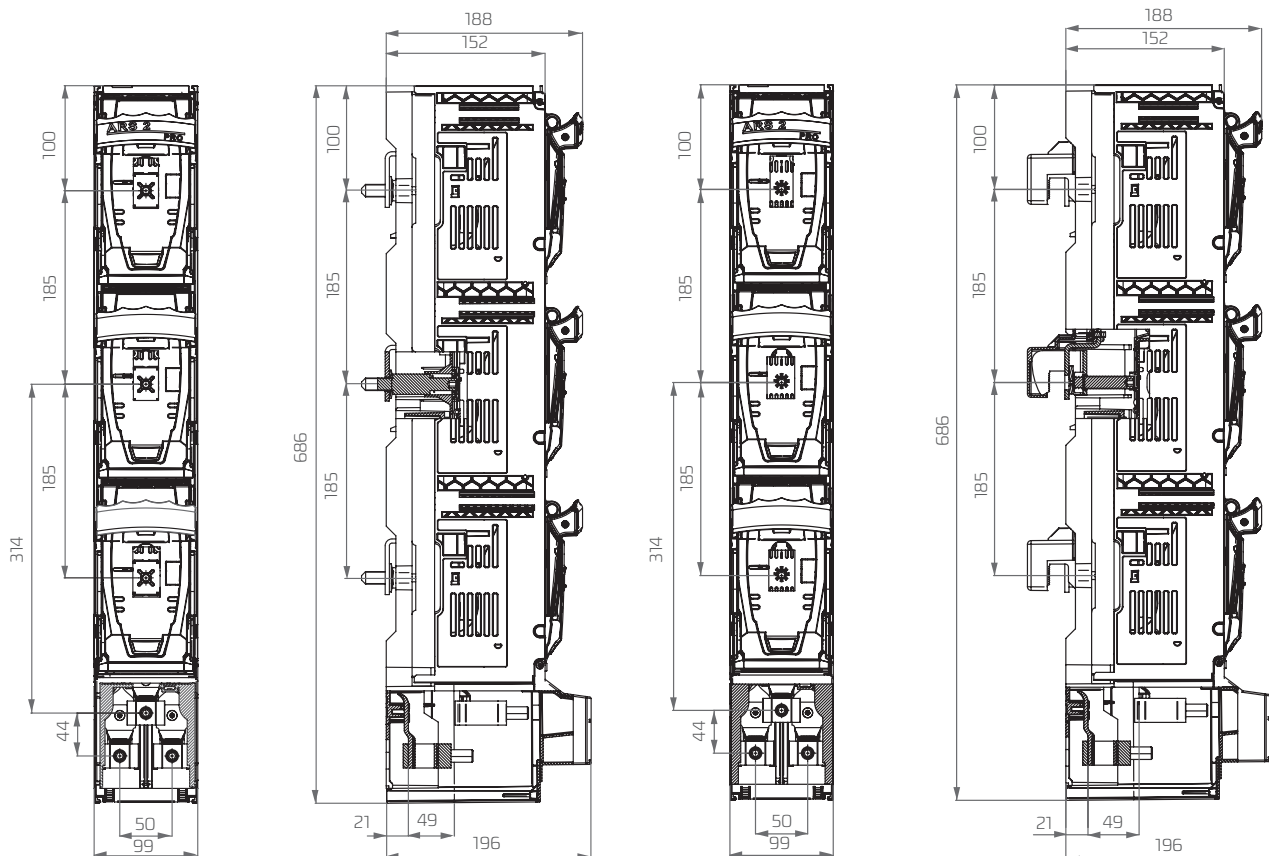


smartARS 2 pro, smartARS 3 pro with fuse monitoring module



smartARS 2 pro, smartARS 3 pro equipped with modules for fast and safe installation using PPN technology

FAST INSTALLATION MODULES EQUIPPED WITH SCREWS    FAST INSTALLATION MODULES EQUIPPED WITH HOOKED CLAMPS



smartARS 2 pro, smartARS 3 pro with lateral busbar terminals

ARS OVERALL DIMENSIONS

