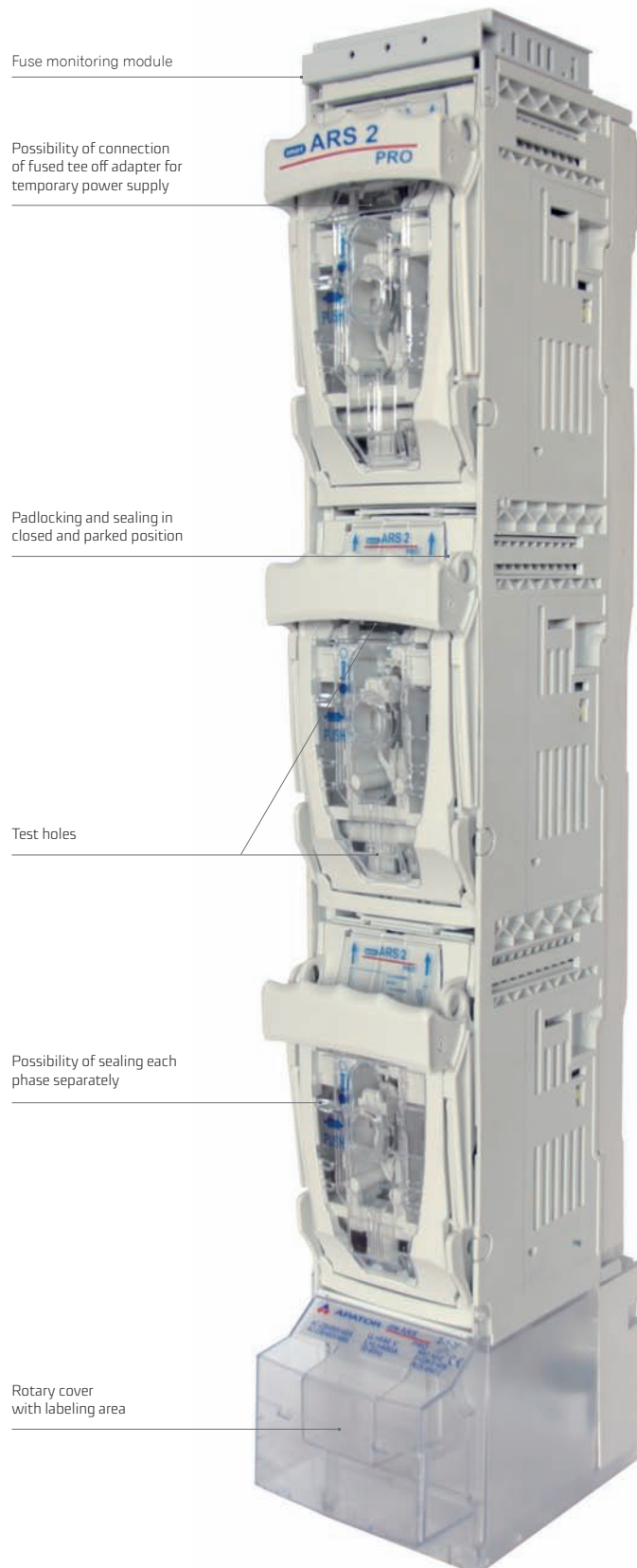


FUSE SWITCH DISCONNECTOR smartARS 2 pro (400 A, 690 V)
smartARS 3 pro (630 A, 690 V)

For installation on to 185 mm busbar system

Fuse switch disconnecter's width 100 mm

3- pole switching - 3 phases simultaneously or 1-pole switching - each phase separately



smartARS 2 pro (400 A, 690 V)

Fuse switch disconnecter designed for operation with NH1 and NH2 fuse links



smartARS 2-1-M pro

smartARS 2-6-M pro

Table 5. Technical data

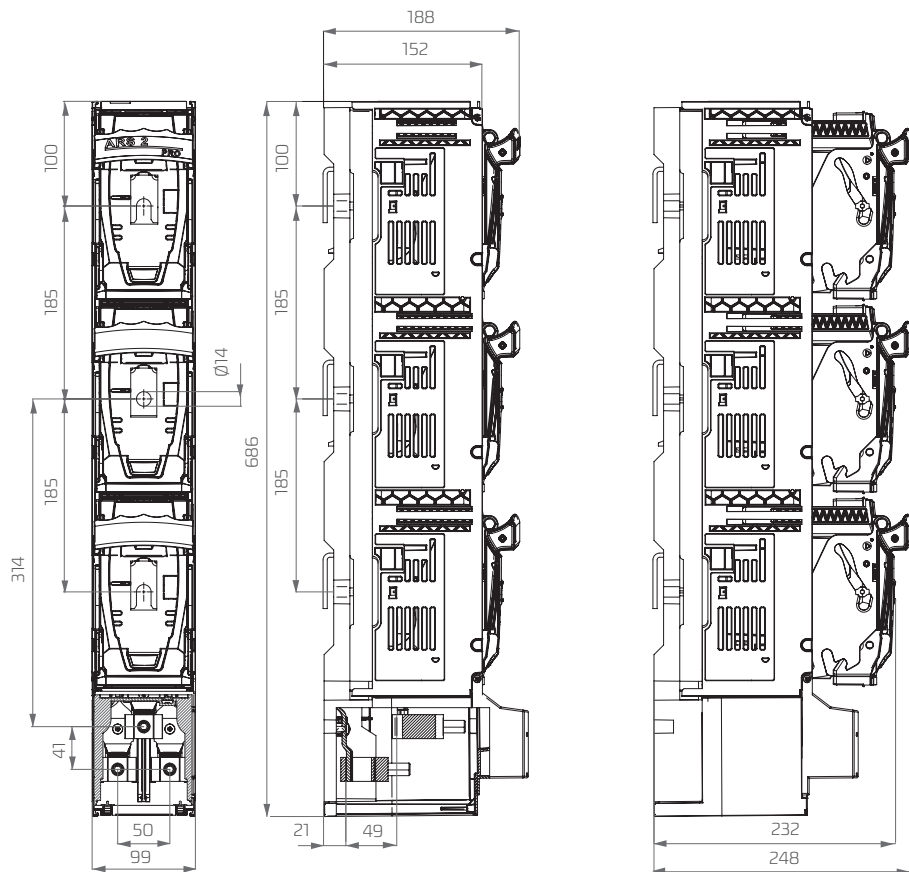
Parameter	smartARS 2 pro	
Rated thermal current I_{th} with fuse links	A	250(NH1), 400(NH2)
Rated thermal current I_{th} with solid links	A	600
Rated voltage U_n	V	690
Utilization category	-	AC-22B AC-23B
Rated switching voltage U_e	V	690 400
Rated switching current I_e	A	250(NH1), 400(NH2)
Rated short circuit making current	$U_e=690\text{ V}$	kA 100
	$U_e=500\text{ V}$	kA 120
Rated short circuit withstand current	$U_e=690\text{ V}$	kA 100
	$U_e=500\text{ V}$	kA 120
Rated insulation voltage U_i	V	1000
Rated impulse withstand voltage $U_{imp.}$	kV	12
Rated frequency	Hz	50-60
Mechanical durability	Number of cycles	1000
Electrical durability		200
IP degree of protection	-	30
Fuse links size	-	1,2

Accessories on page 54, 55

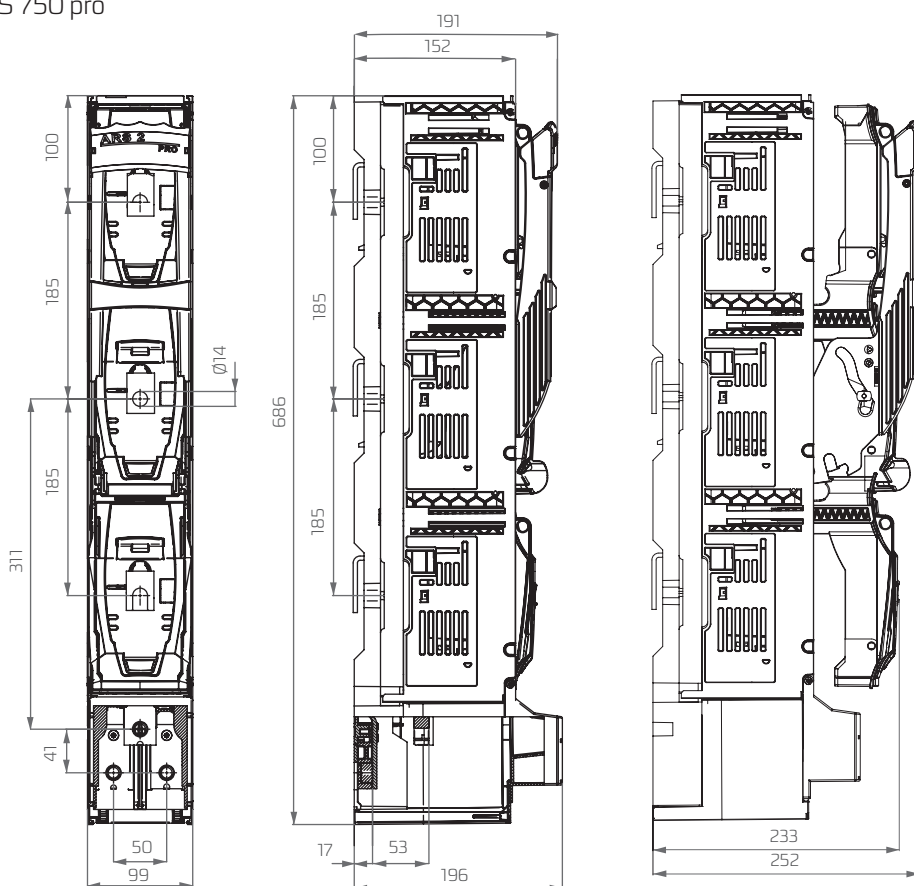
Table 6. Versions

Version		Weight	Article No.
for installation on 185 mm busbar system, ONE POLE SWITCHING - each phase independently			
smartARS 2-1-V pro	cable terminals: V-terminals: V-clamps 240 mm ²	5,8 kg	63-001340-001
smartARS 2-1-M pro	cable terminals: screw terminals: pressed nuts M12	5,7 kg	63-001340-003
smartARS 2-1-2V pro	cable terminals: 2V-terminals: double V-clamps 240 mm ²	6,4 kg	63-001340-005
for installation on 185 mm busbar system, THREE POLE SWITCHING - all phases simultaneously			
smartARS 2-6-V pro	cable terminals: V-terminals: V-clamps 240 mm ²	5,8 kg	63-001341-001
smartARS 2-6-M pro	cable terminals: screw terminals: pressed nuts M12	5,7 kg	63-001341-003
smartARS 2-6-2V pro	cable terminals: 2V-terminals: double V-clamps 240 mm ²	6,4 kg	63-001341-005
smartARS 2 pro version equipped with modules for fast installation using PPN technology			
for installation on 185 mm busbar system, fast installation modules equipped with screws, ONE POLE SWITCHING - each phase independently			
smartARS 2-1-V SM pro	cable terminals: V-terminals: V-clamps 240 mm ²	6,2 kg	63-001340-201
smartARS 2-1-M SM pro	cable terminals: screw terminals: pressed nuts M12	6,1 kg	63-001340-203
smartARS 2-1-2V SM pro	cable terminals: 2V-terminals: double V-clamps 240 mm ²	6,8 kg	63-001340-205
for installation on 185 mm busbar system, fast installation modules equipped with screws, THREE POLE SWITCHING - all phases simultaneously			
smartARS 2-6-V SM pro	cable terminals: V-terminals: V-clamps 240 mm ²	6,2 kg	63-001341-201
smartARS 2-6-M SM pro	cable terminals: screw terminals: pressed nuts M12	6,1 kg	63-001341-203
smartARS 2-6-2V SM pro	cable terminals: 2V-terminals: double V-clamps 240 mm ²	6,8 kg	63-001341-205

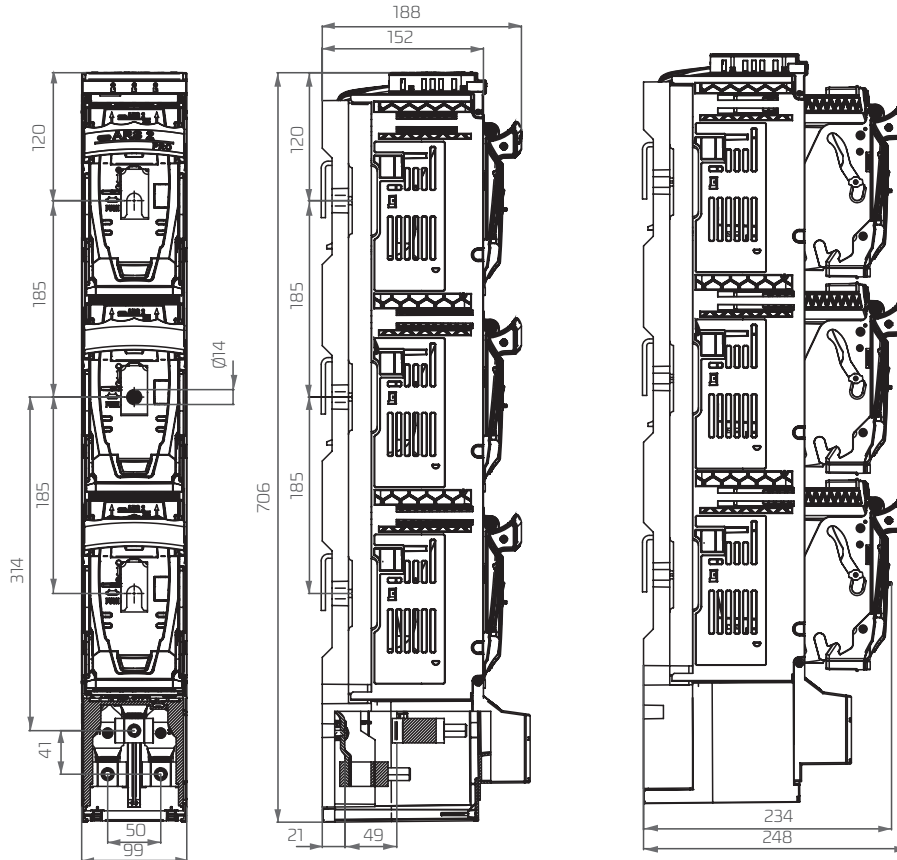
smartARS 2 pro, smartARS 3 pro (without fuse monitoring module)
1-phase



smartARS 2 pro, smartARS 3 pro (without fuse monitoring module)
RWS 600 pro, RWS 750 pro
3-phase



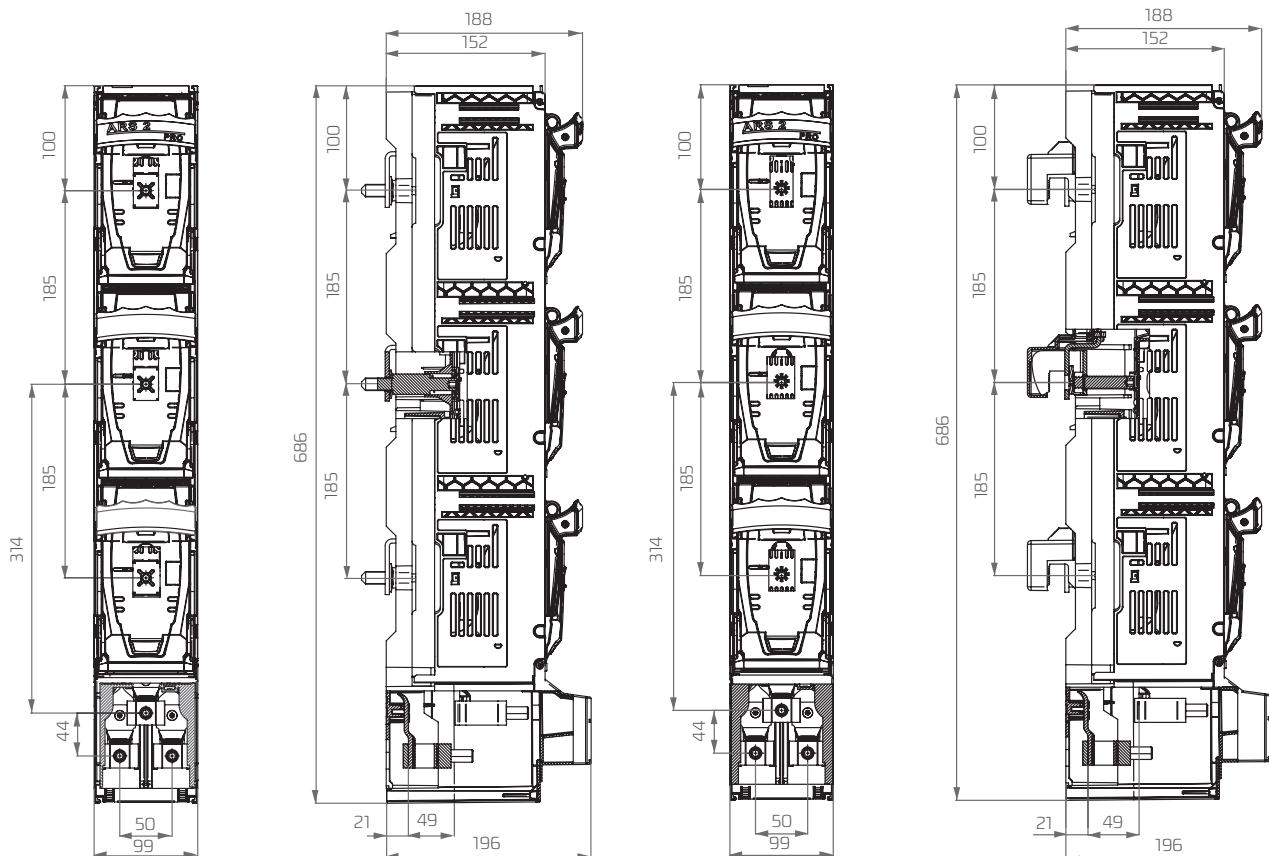
smartARS 2 pro, smartARS 3 pro with fuse monitoring module



ARS OVERALL DIMENSIONS

smartARS 2 pro, smartARS 3 pro equipped with modules for fast and safe installation using PPN technology

FAST INSTALLATION MODULES EQUIPPED WITH SCREWS FAST INSTALLATION MODULES EQUIPPED WITH HOOKED CLAMPS



smartARS 2 pro, smartARS 3 pro with lateral busbar terminals

ARS OVERALL DIMENSIONS

