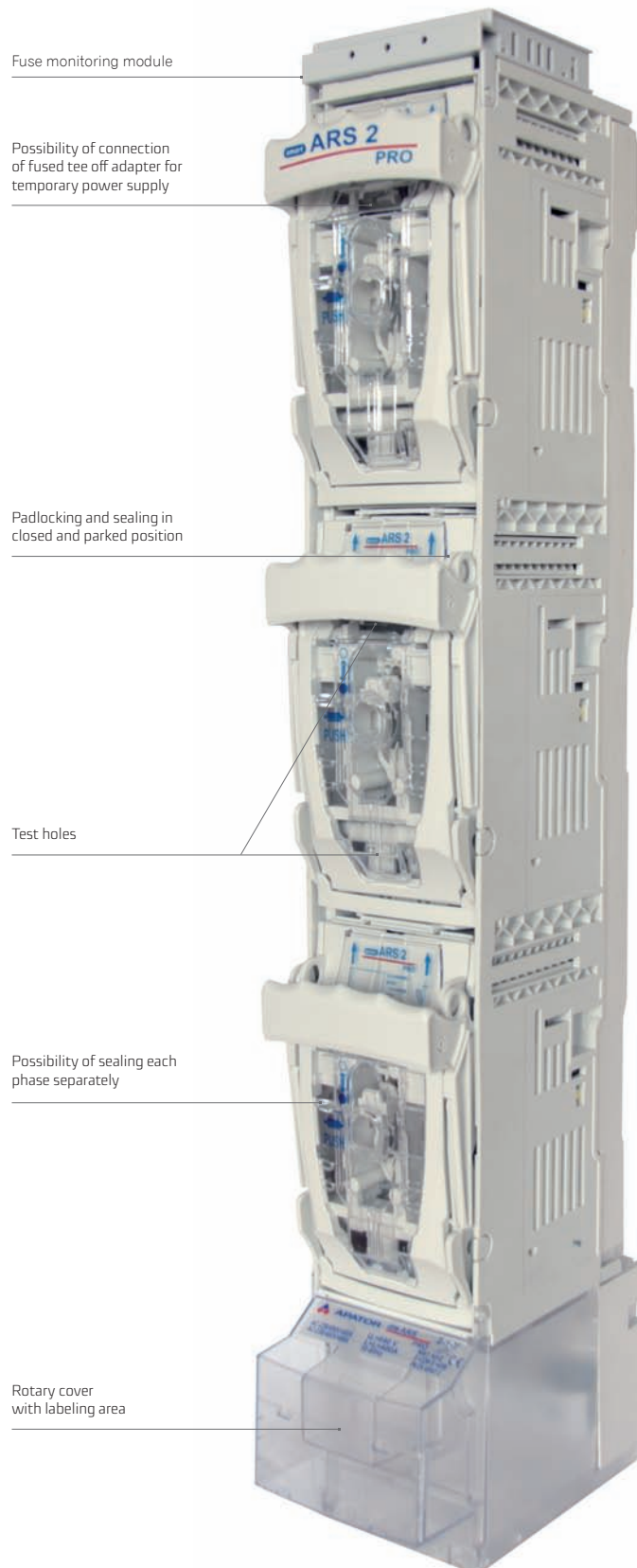


**FUSE SWITCH DISCONNECTOR** smartARS 2 pro (400 A, 690 V)  
smartARS 3 pro (630 A, 690 V)

For installation on to 185 mm busbar system

Fuse switch disconnector's width 100 mm

3- pole switching - 3 phases simultaneously or 1-pole switching - each phase separately



## smartARS 2 pro (400 A, 690 V)

Fuse switch disconnecter designed for operation with NH1 and NH2 fuse links



smartARS 2-1-M pro

smartARS 2-6-M pro

Table 5. Technical data

Parameter	smartARS 2 pro	
Rated thermal current $I_{th}$ with fuse links	A	250(NH1), 400(NH2)
Rated thermal current $I_{th}$ with solid links	A	600
Rated voltage $U_n$	V	690
Utilization category	-	AC-22B AC-23B
Rated switching voltage $U_e$	V	690 400
Rated switching current $I_e$	A	250(NH1), 400(NH2)
Rated short circuit making current	$U_e=690\text{ V}$	kA 100
	$U_e=500\text{ V}$	kA 120
Rated short circuit withstand current	$U_e=690\text{ V}$	kA 100
	$U_e=500\text{ V}$	kA 120
Rated insulation voltage $U_i$	V	1000
Rated impulse withstand voltage $U_{imp.}$	kV	12
Rated frequency	Hz	50-60
Mechanical durability	Number of cycles	1000
Electrical durability		200
IP degree of protection	-	30
Fuse links size	-	1,2

Accessories on page 54, 55

Table 6. Versions

Version		Weight	Article No.
<b>for installation on 185 mm busbar system, ONE POLE SWITCHING - each phase independently</b>			
smartARS 2-1-V pro	cable terminals: V-terminals: V-clamps 240 mm <sup>2</sup>	5,8 kg	63-001340-001
smartARS 2-1-M pro	cable terminals: screw terminals: pressed nuts M12	5,7 kg	63-001340-003
smartARS 2-1-2V pro	cable terminals: 2V-terminals: double V-clamps 240 mm <sup>2</sup>	6,4 kg	63-001340-005
<b>for installation on 185 mm busbar system, THREE POLE SWITCHING - all phases simultaneously</b>			
smartARS 2-6-V pro	cable terminals: V-terminals: V-clamps 240 mm <sup>2</sup>	5,8 kg	63-001341-001
smartARS 2-6-M pro	cable terminals: screw terminals: pressed nuts M12	5,7 kg	63-001341-003
smartARS 2-6-2V pro	cable terminals: 2V-terminals: double V-clamps 240 mm <sup>2</sup>	6,4 kg	63-001341-005
<b>smartARS 2 pro version equipped with modules for fast installation using PPN technology</b>			
<b>for installation on 185 mm busbar system, fast installation modules equipped with screws, ONE POLE SWITCHING - each phase independently</b>			
smartARS 2-1-V SM pro	cable terminals: V-terminals: V-clamps 240 mm <sup>2</sup>	6,2 kg	63-001340-201
smartARS 2-1-M SM pro	cable terminals: screw terminals: pressed nuts M12	6,1 kg	63-001340-203
smartARS 2-1-2V SM pro	cable terminals: 2V-terminals: double V-clamps 240 mm <sup>2</sup>	6,8 kg	63-001340-205
<b>for installation on 185 mm busbar system, fast installation modules equipped with screws, THREE POLE SWITCHING - all phases simultaneously</b>			
smartARS 2-6-V SM pro	cable terminals: V-terminals: V-clamps 240 mm <sup>2</sup>	6,2 kg	63-001341-201
smartARS 2-6-M SM pro	cable terminals: screw terminals: pressed nuts M12	6,1 kg	63-001341-203
smartARS 2-6-2V SM pro	cable terminals: 2V-terminals: double V-clamps 240 mm <sup>2</sup>	6,8 kg	63-001341-205

Version		Weight	Article No.
<b>for installation on 185 mm busbar system, fast installation modules equipped with hooked clamps, ONE POLE SWITCHING - each phase independently</b>			
smartARS 2-1-V SMH pro	cable terminals: V-terminals: V-clamps 240 mm <sup>2</sup>	6,4 kg	63-001340-401
smartARS 2-1-M SMH pro	cable terminals: screw terminals: pressed nuts M12	6,3 kg	63-001340-403
smartARS 2-1-2V SMH pro	cable terminals: 2V-terminals: double V-clamps 240 mm <sup>2</sup>	7,0 kg	63-001340-405
<b>for installation on 185 mm busbar system, fast installation modules equipped with hooked clamps, THREE POLE SWITCHING - all phases simultaneously</b>			
smartARS 2-6-V SMH pro	cable terminals: V-terminals: V-clamps 240 mm <sup>2</sup>	6,4 kg	63-001341-401
smartARS 2-6-M SMH pro	cable terminals: screw terminals: pressed nuts M12	6,3 kg	63-001341-403
smartARS 2-6-2V SMH pro	cable terminals: 2V-terminals: double V-clamps 240 mm <sup>2</sup>	7,0 kg	63-001341-405

Table 7. smartARS 2 pro terminal clamps

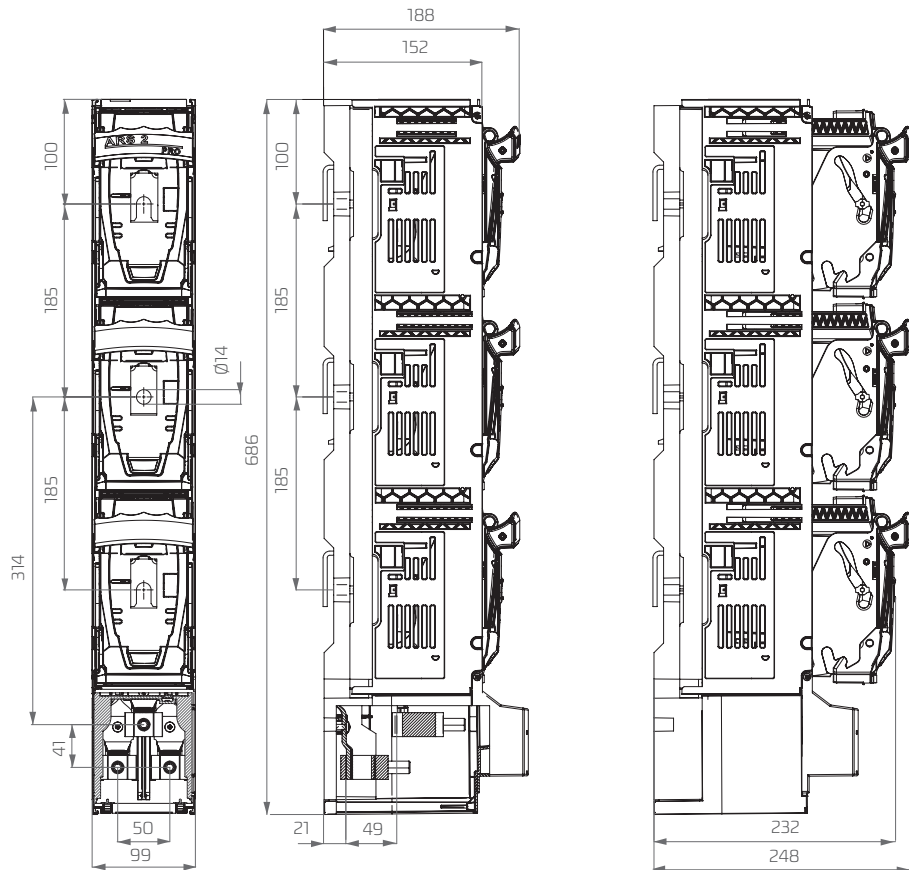
Description	smartARS 2-x-V pro		smartARS 2-x-2V pro		smartARS 2-x-2V pro		smartARS 2-x-M pro
Clamp	V-clamp 35-300SW-B		V-clamp 2/50-300SW-B		V-clamp HS 2/50-240-C*		M-screw M12**
Picture of clamp							
Cross – section of conductors	V-clamp for direct fixing of conductor with bare end with crosssection of						
	35 - 185 mm <sup>2</sup>	35 - 240 mm <sup>2</sup>	50 - 185 mm <sup>2</sup>	50 - 240 mm <sup>2</sup>	50 - 185 mm <sup>2</sup>	50 - 240 mm <sup>2</sup>	Lug terminal
Tightening torque	30 Nm		30 Nm		40 Nm		56 Nm

For stranded conductors using cable ferrules is recommended

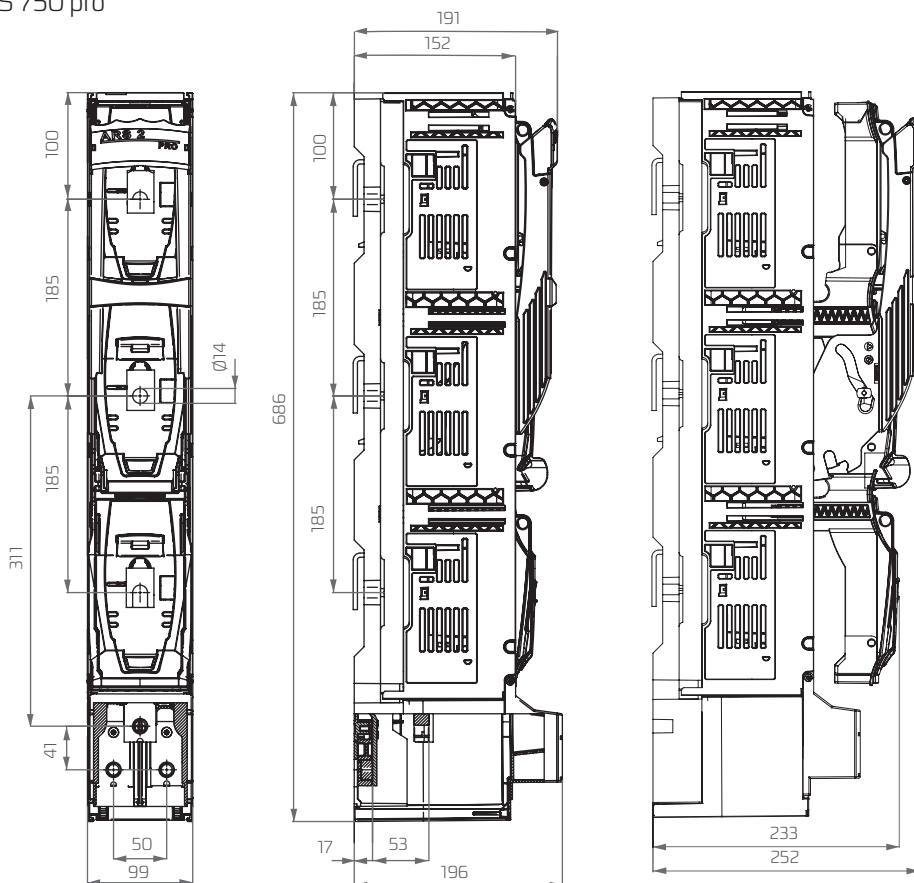
\*) if the fuse switch disconnector with a 2V-type clamp is to be equipped with a steel V-clamp HS 2/50-240-C, it should be included in the order

 \*\*) bars of maximum width of 40 mm and maximum thickness of 8 mm can be fixed to M type screw terminals when protective barrier between phases is installed  
 Apator takes responsibility for technical quality of V-terminals manufactured only by the company. Minimum tightening torque (M8 screw) for screws fixing fuse switch disconnector to busbar system – 32 Nm, recommended tightening torque for screws and nuts with property class 8.8 – 56 Nm.

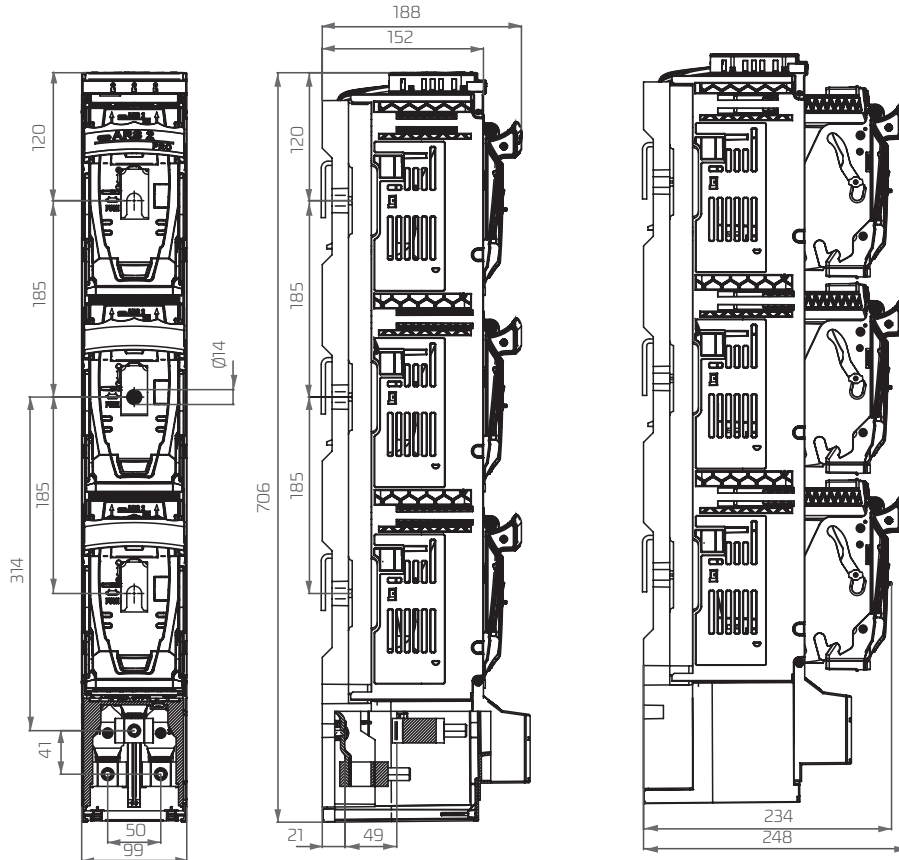
smartARS 2 pro, smartARS 3 pro (without fuse monitoring module)  
1-phase



smartARS 2 pro, smartARS 3 pro (without fuse monitoring module)  
RWS 600 pro, RWS 750 pro  
3-phase



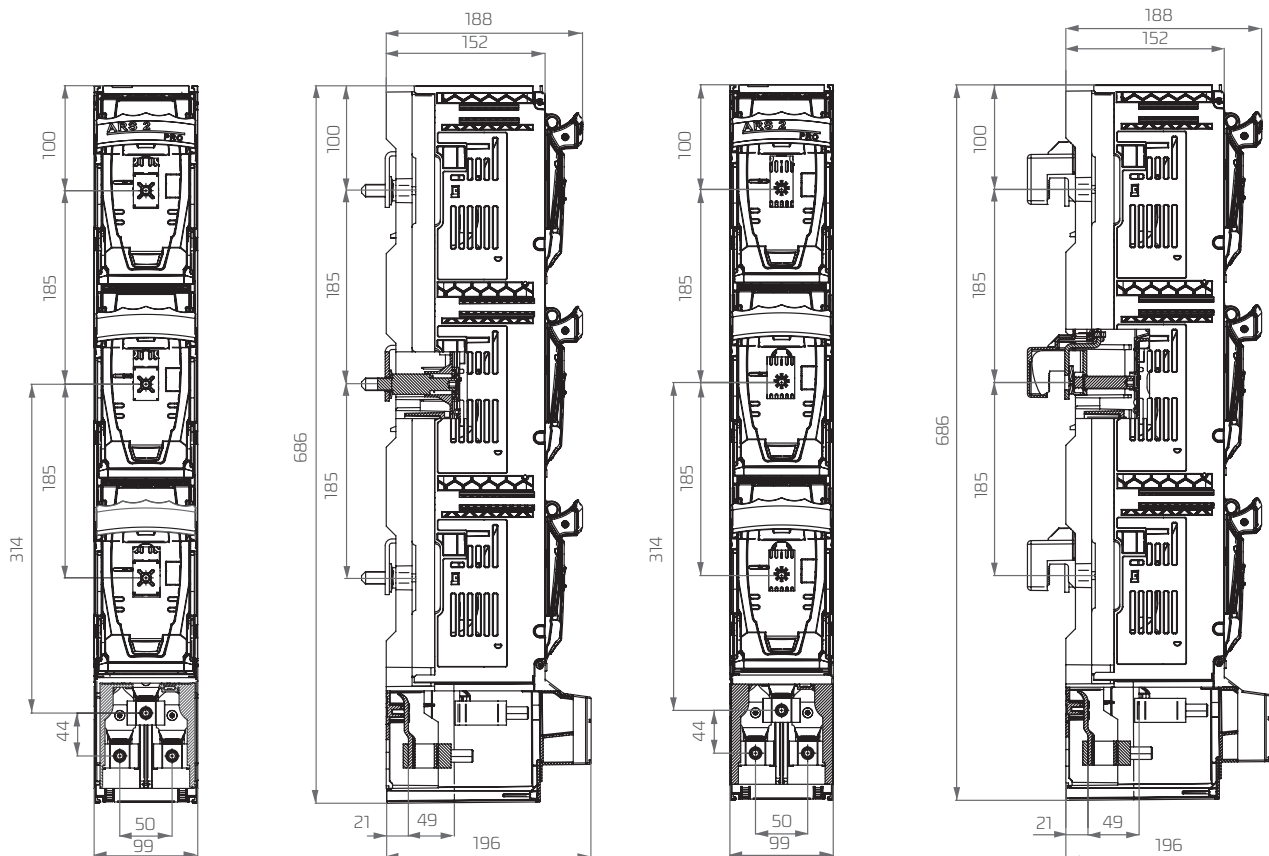
smartARS 2 pro, smartARS 3 pro with fuse monitoring module



ARS OVERALL DIMENSIONS

smartARS 2 pro, smartARS 3 pro equipped with modules for fast and safe installation using PPN technology

FAST INSTALLATION MODULES EQUIPPED WITH SCREWS    FAST INSTALLATION MODULES EQUIPPED WITH HOOKED CLAMPS



smartARS 2 pro, smartARS 3 pro with lateral busbar terminals

ARS OVERALL DIMENSIONS

