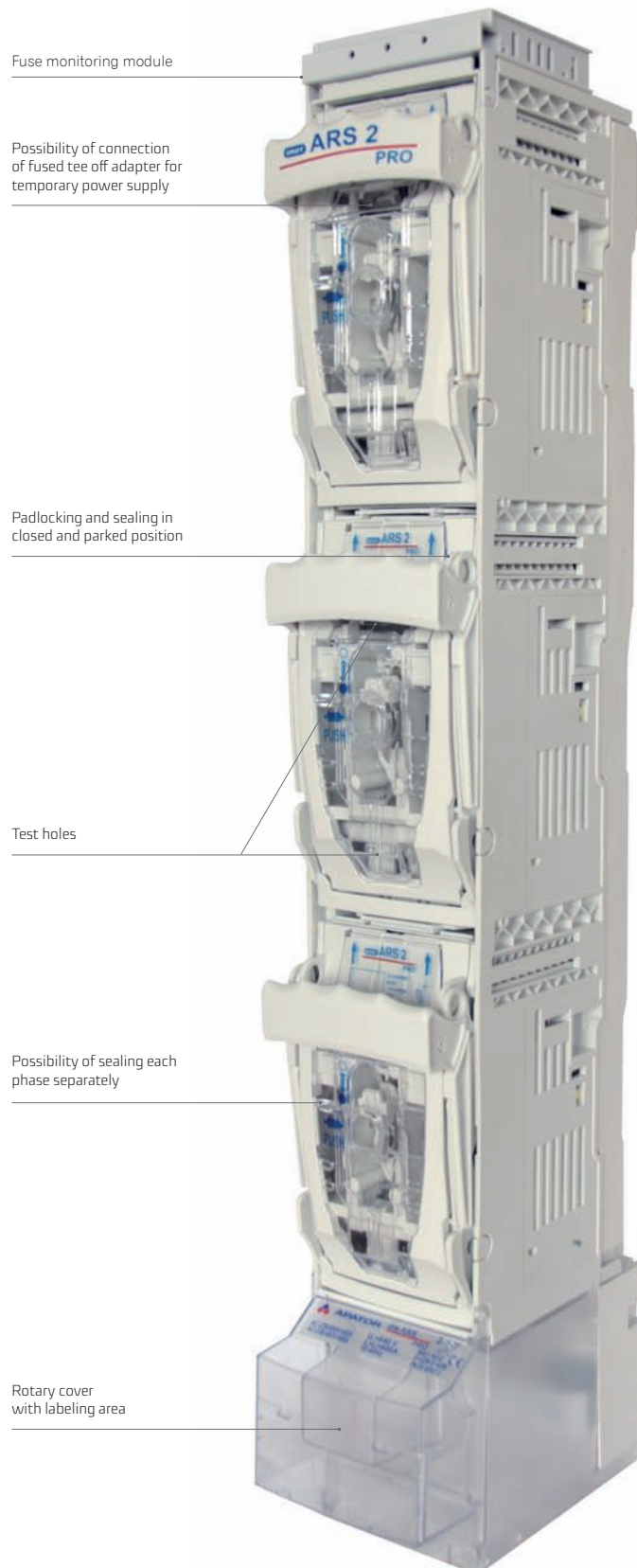


**FUSE SWITCH DISCONNECTOR** smartARS 2 pro (400 A, 690 V)  
smartARS 3 pro (630 A, 690 V)

For installation on to 185 mm busbar system

Fuse switch disconnecter's width 100 mm

3- pole switching - 3 phases simultaneously or 1-pole switching - each phase separately



## smartARS 3 pro (630 A, 690 V)



smartARS 3-1-M pro    smartARS 3-6-M pro

Table 8. Technical data

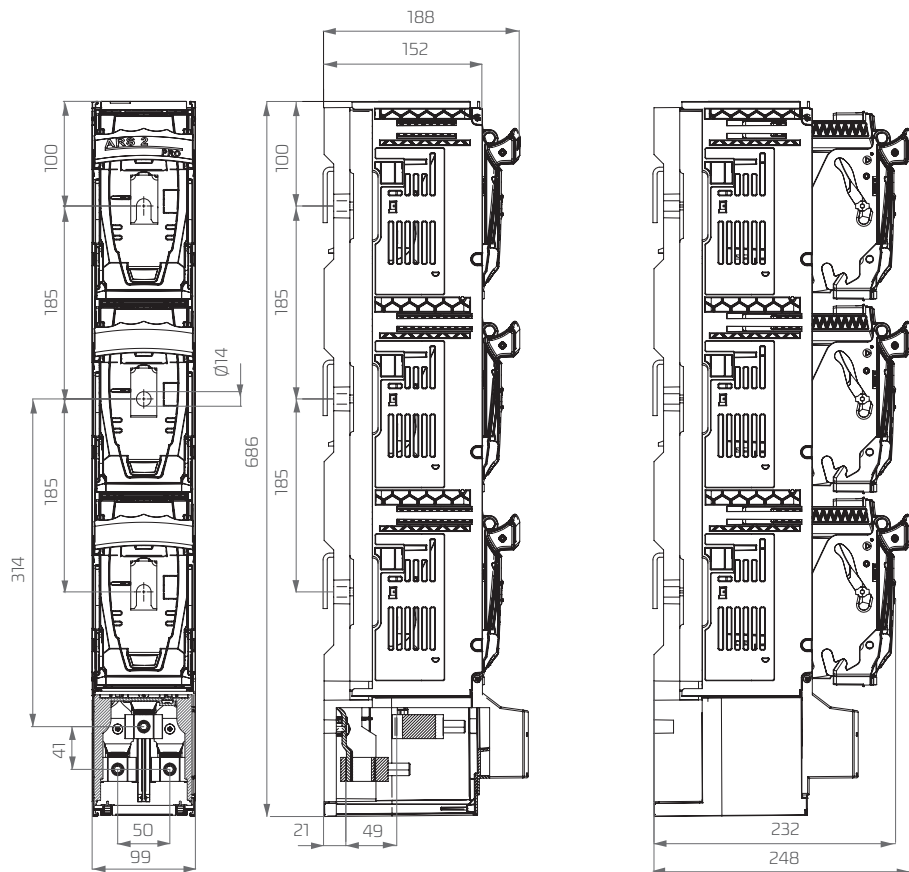
Parameter	smartARS 3 pro			
Rated thermal current $I_{th}$ with fuse links	A	630		
Rated thermal current $I_{th}$ with solid links	A	750		
Rated voltage $U_n$	V	690		
Utilization category	-	AC-23B	AC-22B	AC-21B
Rated switching voltage $U_e$	V	400	500	690
Rated switching current $I_e$	A	630		
Rated short circuit making current	690 V	kA	80	
	500 V		120	
Rated short circuit withstand current	kA	100		
Rated insulation voltage $U_i$	V	1000		
Rated impulse withstand voltage $U_{imp}$	kV	12		
Rated frequency	Hz	50-60		
Mechanical durability	Number of cycles	1000		
Electrical durability		200		
IP degree of protection	-	30		
Fuse links size	-	3		

Accessories on page 54, 55

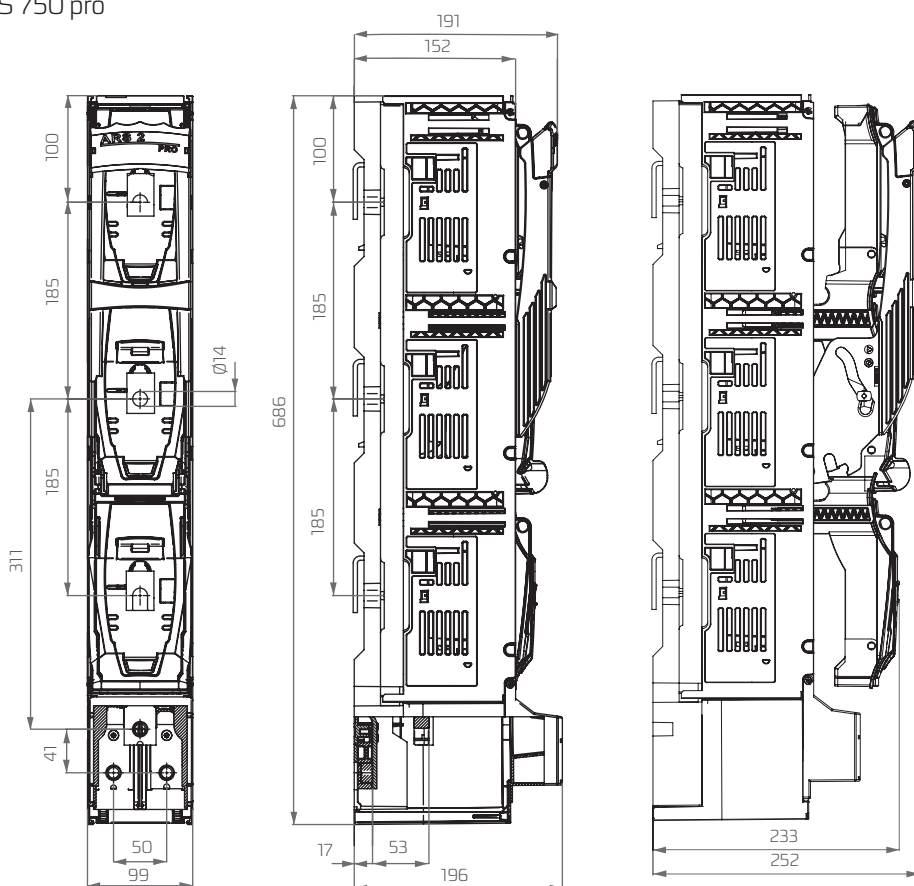
Table 9. Versions

Version	Weight	Article No.
<b>for installation on 185 mm busbar system, ONE POLE SWITCHING - each phase independently</b>		
smartARS 3-1-V pro    cable terminals: V-terminals: V-clamps 240 mm <sup>2</sup>	6,6 kg	63-001340-002
smartARS 3-1-M pro    cable terminals: screw terminals: pressed nuts M12	6,5 kg	63-001340-004
smartARS 3-1-2V pro    cable terminals: 2V-terminals: double V-clamps 240 mm <sup>2</sup>	7,2 kg	63-001340-006
<b>for installation on 185 mm busbar system, THREE POLE SWITCHING - all phases simultaneously</b>		
smartARS 3-6-V pro    cable terminals: V-terminals: V-clamps 240 mm <sup>2</sup>	6,6 kg	63-001341-002
smartARS 3-6-M pro    cable terminals: screw terminals: pressed nuts M12	6,5 kg	63-001341-004
smartARS 3-6-2V pro    cable terminals: 2V-terminals: double V-clamps 240 mm <sup>2</sup>	7,2 kg	63-001341-006
<b>smartARS 2 pro version equipped with modules for fast installation using PPN technology</b>		
<b>for installation on 185 mm busbar system, fast installation modules equipped with screws, ONE POLE SWITCHING - each phase independently</b>		
smartARS 3-1-V SM pro    cable terminals: V-terminals: V-clamps 240 mm <sup>2</sup>	7,0 kg	63-001340-202
smartARS 3-1-M SM pro    cable terminals: screw terminals: pressed nuts M12	6,9 kg	63-001340-204
smartARS 3-1-2V SM pro    cable terminals: 2V-terminals: double V-clamps 240 mm <sup>2</sup>	7,6 kg	63-001340-206
<b>for installation on 185 mm busbar system, fast installation modules equipped with screws, THREE POLE SWITCHING - all phases simultaneously</b>		
smartARS 3-6-V SM pro    cable terminals: V-terminals: V-clamps 240 mm <sup>2</sup>	7,0 kg	63-001341-202
smartARS 3-6-M SM pro    cable terminals: screw terminals: pressed nuts M12	6,9 kg	63-001341-204
smartARS 3-6-2V SM pro    cable terminals: 2V-terminals: double V-clamps 240 mm <sup>2</sup>	7,6 kg	63-001341-206
<b>for installation on 185 mm busbar system, fast installation modules equipped with hooked clamps, ONE POLE SWITCHING - each phase independently</b>		
smartARS 3-1-V SMH pro    cable terminals: V-terminals: V-clamps 240 mm <sup>2</sup>	7,2 kg	63-001340-402
smartARS 3-1-M SMH pro    cable terminals: screw terminals: pressed nuts M12	7,1 kg	63-001340-404
smartARS 3-1-2V SMH pro    cable terminals: 2V-terminals: double V-clamps 240 mm <sup>2</sup>	7,8 kg	63-001340-406

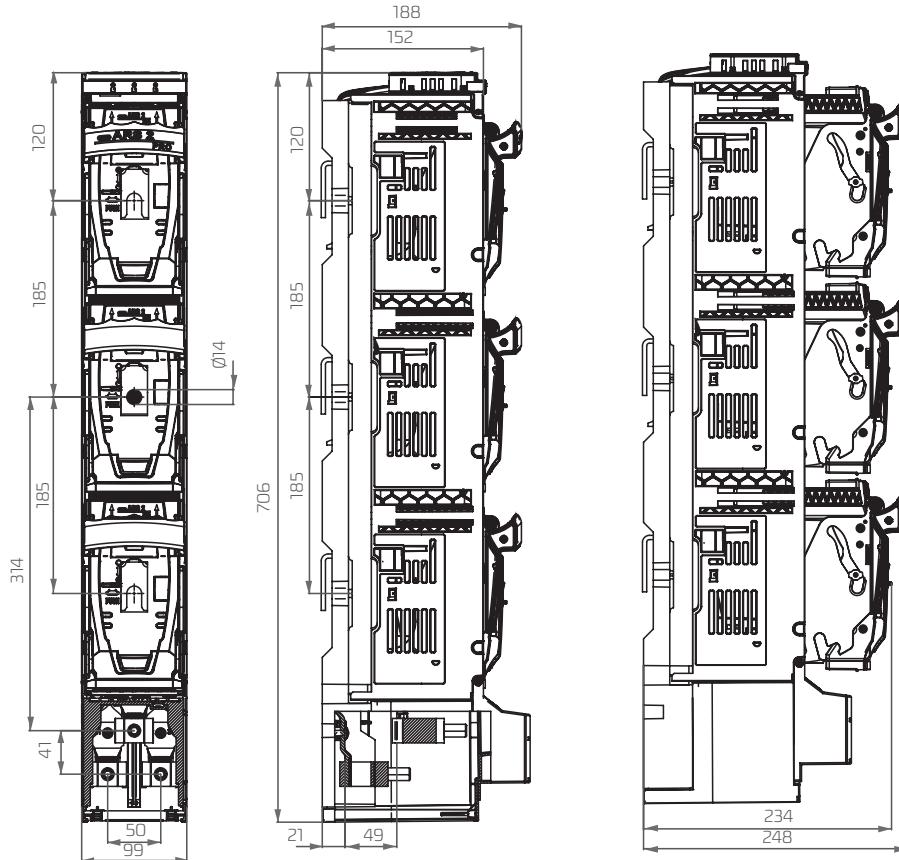
smartARS 2 pro, smartARS 3 pro (without fuse monitoring module)  
1-phase



smartARS 2 pro, smartARS 3 pro (without fuse monitoring module)  
RWS 600 pro, RWS 750 pro  
3-phase



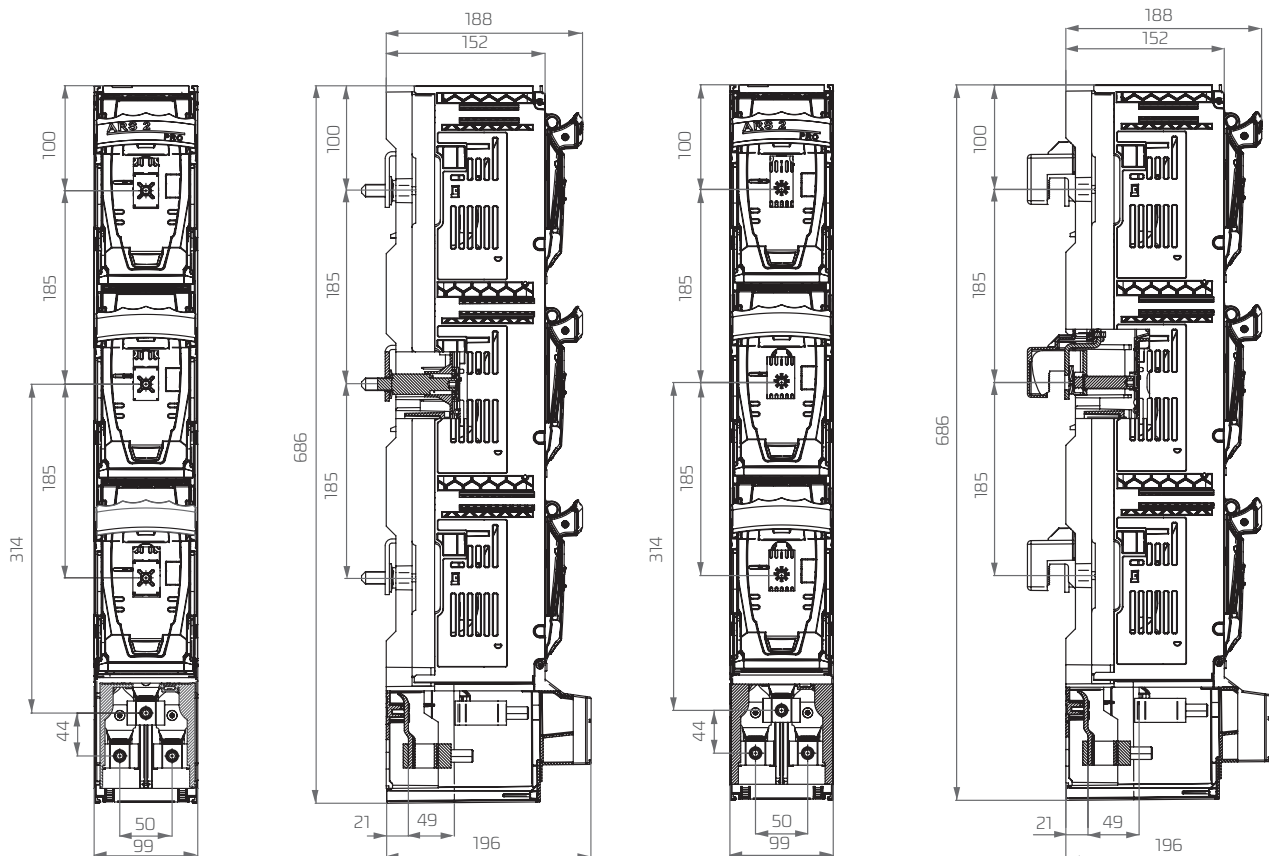
smartARS 2 pro, smartARS 3 pro with fuse monitoring module



ARS OVERALL DIMENSIONS

smartARS 2 pro, smartARS 3 pro equipped with modules for fast and safe installation using PPN technology

FAST INSTALLATION MODULES EQUIPPED WITH SCREWS FAST INSTALLATION MODULES EQUIPPED WITH HOOKED CLAMPS



smartARS 2 pro, smartARS 3 pro with lateral busbar terminals

ARS OVERALL DIMENSIONS

