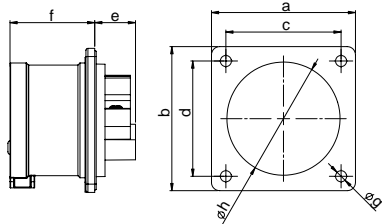


CEE Flanged plugs

Flanged plug straight IP44

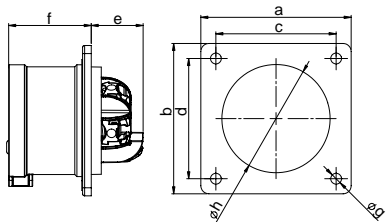


Poles	16 Amp			32 Amp		
	3	4	5	3	4	5
) O D Q J H D [E [mm]m]	70	70	70	70	70	70
) L [L Q J F H Q W H U F [G G r [mm]m]	56	56	56	56	56	56
e [mm]	21	21	20	21	21	21
f [mm]	42	42	42	51	51	51
g [mm]	5,5	5,5	5,5	5,5	5,5	5,5
h [mm]	43	43	55	55	55	55
: L U H 2 H [L E Φ H [mm]O [mm]	1-2,5			2,5-6		
Wire solid [mm ²]	1-4			2,5-10		
Contact screws [Ncm]	100			110		
Weight [g]	86	101	118	125	145	165

- with screw terminals
- housing material: PA6
- contacts: brass
 - to order nickel-plated contacts please add a "v" e.g. 615-6v
- According to EN 60309: For correct use a locking device has to be provided (see page 10)

IP44 splashproof

Flanged plug straight IP44 TT

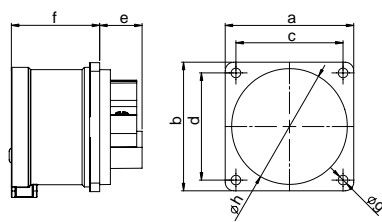


Poles	16 Amp		32 Amp	
	3	5	4	5
) O D Q J H D [E [mm]m]	70	70	70	70
) L [L Q J F H Q W H U F [G G r [mm]m]	56	56	56	56
e [mm]	26	26	29	29
f [mm]	42	42	51	51
g [mm]	5,5	5,5	5,5	5,5
h [mm]	43	55	55	55
: L U H 2 H [L E Φ H [mm]O [mm]	1-2,5		2,5-6	
Wire solid [mm ²]	1-4		2,5-10	
Weight [g]	89	122	151	172

- screwless connection technology
- housing material: PA6
- contacts: brass
 - to order nickel-plated contacts please add a "v" e.g. 615-6TTv
- According to EN 60309: For correct use a locking device has to be provided (see page 10)

IP44 splashproof

Flanged plug straight IP44

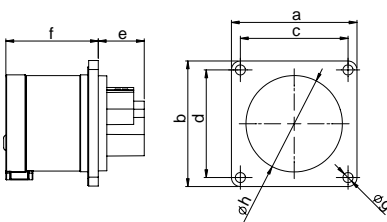


Poles	16 Amp		
	3	4	5
) O D Q J H D [E [mm]m]	60	60	60
) L [L Q J F H Q W H U F [G G r [mm]m]	50	50	50
e [mm]	21	21	20
f [mm]	42	42	42
g [mm]	4,5	4,5	4,5
h [mm]	43	43	55
: L U H 2 H [L E Φ H [mm]O [mm]	1-2,5		
Wire solid [mm ²]	1-4		
Contact screws [Ncm]	100		
Weight [g]	78	93	109

- with screw terminals
- housing material: PA6
- contacts: brass
 - to order nickel-plated contacts please add a "v" e.g. 615-6f6v
- According to EN 60309: For correct use a locking device has to be provided (see page 10)

IP44 splashproof

Flanged plug straight IP44



Poles	16 Amp	
	3	4
) O D Q J H D [E [mm]m]	56	56
) L [L Q J F H Q W H U F [G G r [mm]m]	48	48
e [mm]	21	21
f [mm]	42	42
g [mm]	4,5	4,5
h [mm]	43	43
: L U H 2 H [L E Φ H [mm]O [mm]	1-2,5	
Wire solid [mm ²]	1-4	
Contact screws [Ncm]	100	
Weight [g]	76	91

- with screw terminals
- housing material: PA6
- contacts: brass
 - to order nickel-plated contacts please add a "v" e.g. 615-6f3v
- According to EN 60309: For correct use a locking device has to be provided (see page 10)

IP44 splashproof

110V~

Amp.	Poles	pack. unit	50/60Hz	50/60Hz	50/60Hz	50/60Hz	100-300Hz	301-500Hz
			4h	3p=6h 4p+5p= 9h	3p= 9h 4p+5p= 6h	7h	10h	2h
			Cat.No.	Cat.No.	Cat.No.	Cat.No.	Cat.No.	Cat.No.
2 D Q J H	[1 [L Q J F H Q W H U	[
16	3	10	613-4	613-6	613-9	613-7	613-10	613-2
16	4	10	614-4	614-9	614-6	614-7	614-10	614-2
16	5	10	615-4	615-9	615-6	615-7	615-10	615-2
32	3	10	623-4	623-6	623-9	623-7	623-10	623-2
32	4	10	624-4	624-9	624-6	624-7	624-10	624-2
32	5	10	625-4	625-9	625-6	625-7	625-10	625-2



623-6

Amp.	Poles	pack. unit	50/60Hz	50/60Hz	50/60Hz	50/60Hz	100-300Hz	301-500Hz
			4h	3p=6h 4p+5p= 9h	3p= 9h 4p+5p= 6h	7h	10h	2h
			Cat.No.	Cat.No.	Cat.No.	Cat.No.	Cat.No.	Cat.No.
2 D Q J H	[1 [L Q J F H Q W H U	[
16	3	10	613-4TT	613-6TT	613-9TT			
16	5	10	615-4TT	615-9TT	615-6TT			
32	4	10	624-4TT	624-9TT	624-6TT			
32	5	10	625-4TT	625-9TT	625-6TT			



613-4TT

Amp.	Poles	pack. unit	50/60Hz	50/60Hz	50/60Hz	50/60Hz	100-300Hz	301-500Hz
			4h	3p=6h 4p+5p= 9h	3p= 9h 4p+5p= 6h	7h	10h	2h
			Cat.No.	Cat.No.	Cat.No.	Cat.No.	Cat.No.	Cat.No.
2 D Q J H	[1 [L Q J F H Q W H U	[
16	3	10	613-4f6	613-6f6	613-9f6	613-7f6	613-10f6	613-2f6
16	4	10	614-4f6	614-9f6	614-6f6	614-7f6	614-10f6	614-2f6
16	5	10	615-4f6	615-9f6	615-6f6	615-7f6	615-10f6	615-2f6



613-6f6

Amp.	Poles	pack. unit	50/60Hz	50/60Hz	50/60Hz	50/60Hz	100-300Hz	301-500Hz
			4h	3p=6h 4p+5p= 9h	3p= 9h 4p+5p= 6h	7h	10h	2h
			Cat.No.	Cat.No.	Cat.No.	Cat.No.	Cat.No.	Cat.No.
2 D Q J H	[1 [L Q J F H Q W H U	[
16	3	10	613-4f3	613-6f3	613-9f3	613-7f3	613-10f3	613-2f3
16	4	10	614-4f3	614-9f3	614-6f3	614-7f3	614-10f3	614-2f3

