



SURUBELNITE



Manere cu design ergonomic

La calitatea superioara a materialelor folosite pentru gama de surubelnite Unior se adauga manere de concepie ergonomica care permit o excelenta calitate a prizei.



Manere tri material

Multumita asocierii suprafetelor rigide cu cele mai moi, manerul special cu trei componente (brevetat Unior) permite o folosire eficace si confortabila care solicita putin incheietura in timpul lucrului



Priza antiderapanta

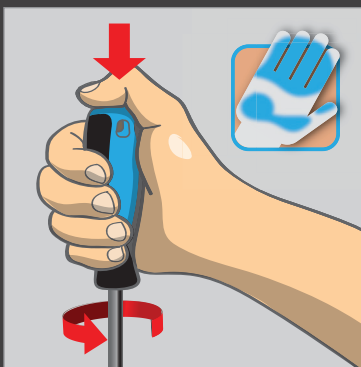
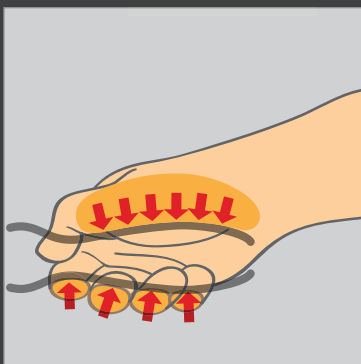
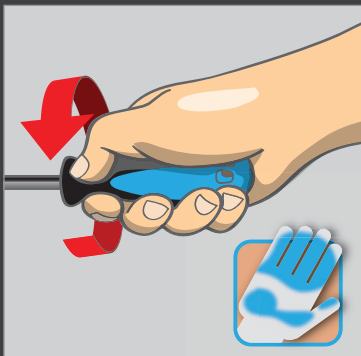
Concepute pentru a se adapta la o mare varietate de profile de suruburi si avand un maner din tricomponent, surubelnitele Unior asigura o mare eficacitate si o priza anti alunecare.

MANER ERGONOMIC

Combinatia de suprafete dure si moi imbunatateste factorul de incarcare si asigura insurubarea usoara. Manerul a fost conceput in asa fel incat are grija de sanatatea utilizatorului pentru ca reduce tensiunea in muschii mainii



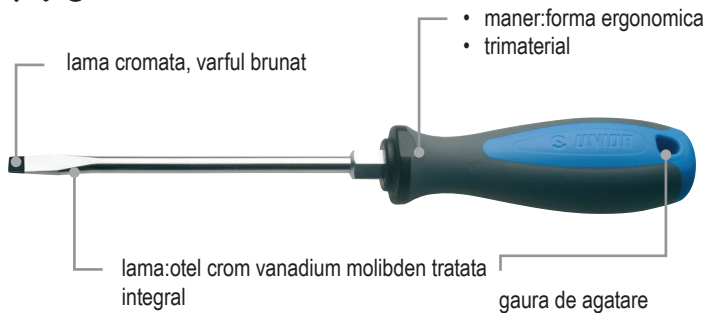
Suprafata maximala de contact a mainii = valoare de cuplu superioara



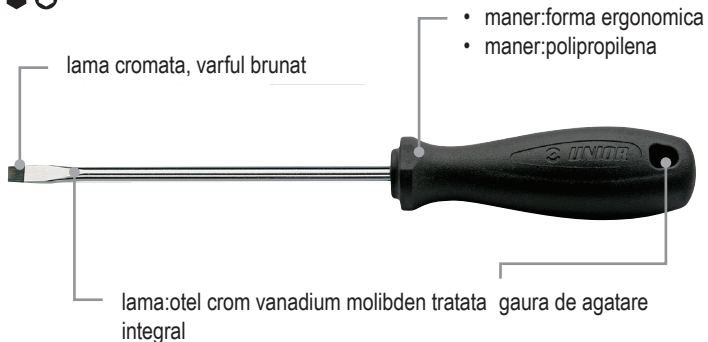
Conceptia ergonomic a manerului = protejarea mainii

Caracteristicile surubelnitelor Unior

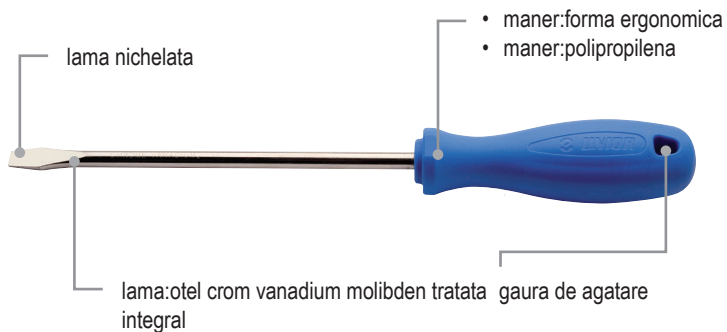
— + + * * ● ○



— + + * ● ○



— + +



612CR

Surubelnita profil Phillips (PH) pentru electricieni, maner polipropilena, cromata +

- lama: otel crom vanadium molibden tratata integral
- lama cromata, varful brunat
- maner: forma ergonomica
- maner: polipropilena
- gaura de agatare




UNIOR

+	C	L	D	⚙️	🔧	🔩	🔩	🔩
616360	PH 1	280	365	4.5	67	4B	5	20,82
616361	PH 2	200	300	6	98	4B	10	26,07
616362	PH 2	280	380	6	113	4B	5	29,67

616TBI

Surubelnita profil Phillips (PH), mecanica cu hexagon maner trimaterial TBI, cromata +

- lama: otel crom vanadium molibden tratata integral
- lama cromata, varful brunat
- maner: forma ergonomica
- trimaterial
- gaura de agatare
- in concordanta cu standardul ISO 8764-1,2




UNIOR

+	C	L	D	⚙️	🔧	🔩	🔩	🔩	
611709	PH 1	80	180	4.5	8	60	4B	10	25,05
611710	PH 2	100	210	6	10	94	4B	10	31,38
611711	PH 3	150	270	8	13	154	4B	5	44,32

616CR

Surubelnita profil Phillips (PH), mecanica cu hexagon maner polipropilena, cromata +

- lama: otel crom vanadium molibden tratata integral
- lama cromata, varful brunat
- maner: forma ergonomica
- maner: polipropilena
- gaura de agatare
- in concordanta cu standardul ISO 8764-1,2




UNIOR

+	C	L	D	⚙️	🔧	🔩	🔩	🔩	
616370	PH 1	80	180	4.5	8	60	4B	10	17,46
616371	PH 2	100	210	6	10	94	4B	10	22,57
616372	PH 3	150	270	8	13	154	4B	5	34,83

626TBI

Surubelnita profil Phillips (PH) varianta Stubby, maner trimaterial TBI, cromata +

- lama: otel crom vanadium molibden tratata integral
- lama cromata, varful brunat
- maner: forma ergonomica
- trimaterial
- gaura de agatare
- in concordanta cu standardul ISO 8764-1,2




UNIOR

+	C	L	D	⚙️	🔧	🔩	🔩	🔩
612830	PH 1	25	87	4.5	37	4B	10	16,73
612831	PH 2	25	87	6	41	4B	10	17,37
617088	PH 2	35	97	6	43	4B	10	17,37

626CR

Surubelnita profil Phillips (PH) varianta Stubby, maner polipropilena, cromata +

- lama: otel crom vanadium molibden tratata integral
- lama cromata, varful brunat
- maner: forma ergonomica
- maner: polipropilena
- gaura de agatare
- in concordanta cu standardul ISO 8764-1,2




UNIOR

+	C	L	D	⚙️	🔧	🔩	🔩	🔩
616397	PH 1	25	85	4.5	37	4B	10	11,63
616398	PH 2	25	85	6	41	4B	10	12,31



625TBI

Surubelnita profil Pozidrive (PZ) maner trimaterial TBI, cromata +

- lama: otel crom vanadium molibden tratata integral
- lama cromata, varful brunat
- maner: forma ergonomica
- trimaterial
- gaura de agatare
- in concordanta cu standardul ISO 8764-1,2




UNIOR

+	C	L	D	⚙️	🔧	🔩	🔩	🔩
611741	PZ 0	60	145	3	34	4B	10	14,59
611742	PZ 1	80	180	4.5	60	4B	10	20,14
611743	PZ 2	100	210	6	93	4B	10	25,54
611744	PZ 3	150	270	8	156	4B	5	32,98

625CR

Surubelnita profil Pozidrive (PZ) maner polipropilena, cromata +

- lama: otel crom vanadium molibden tratata integral
- lama cromata, varful brunat
- maner: forma ergonomica
- maner: polipropilena
- gaura de agatare
- in concordanta cu standardul ISO 8764-1,2




UNIOR

+	C	L	D	⚙️	🔧	🔩	🔩	🔩
616393	PZ 0	60	145	3	34	4B	10	10,80
616394	PZ 1	80	165	4.5	60	4B	10	12,16
616395	PZ 2	100	200	6	93	4B	10	16,69
616396	PZ 3	150	260	8	156	4B	5	24,76

636

Surubelnita reversibila maner polipropilena, nichelata +

- lama: otel crom vanadium molibden tratata integral
- lama nichelata
- maner: forma ergonomica
- maner: polipropilena




UNIOR

a x b	+	L	D	⚙️	🔧	🔩	🔩	🔩
608922	1.0 x 6.0	PH 2	140	6	53	1E	10	14,54