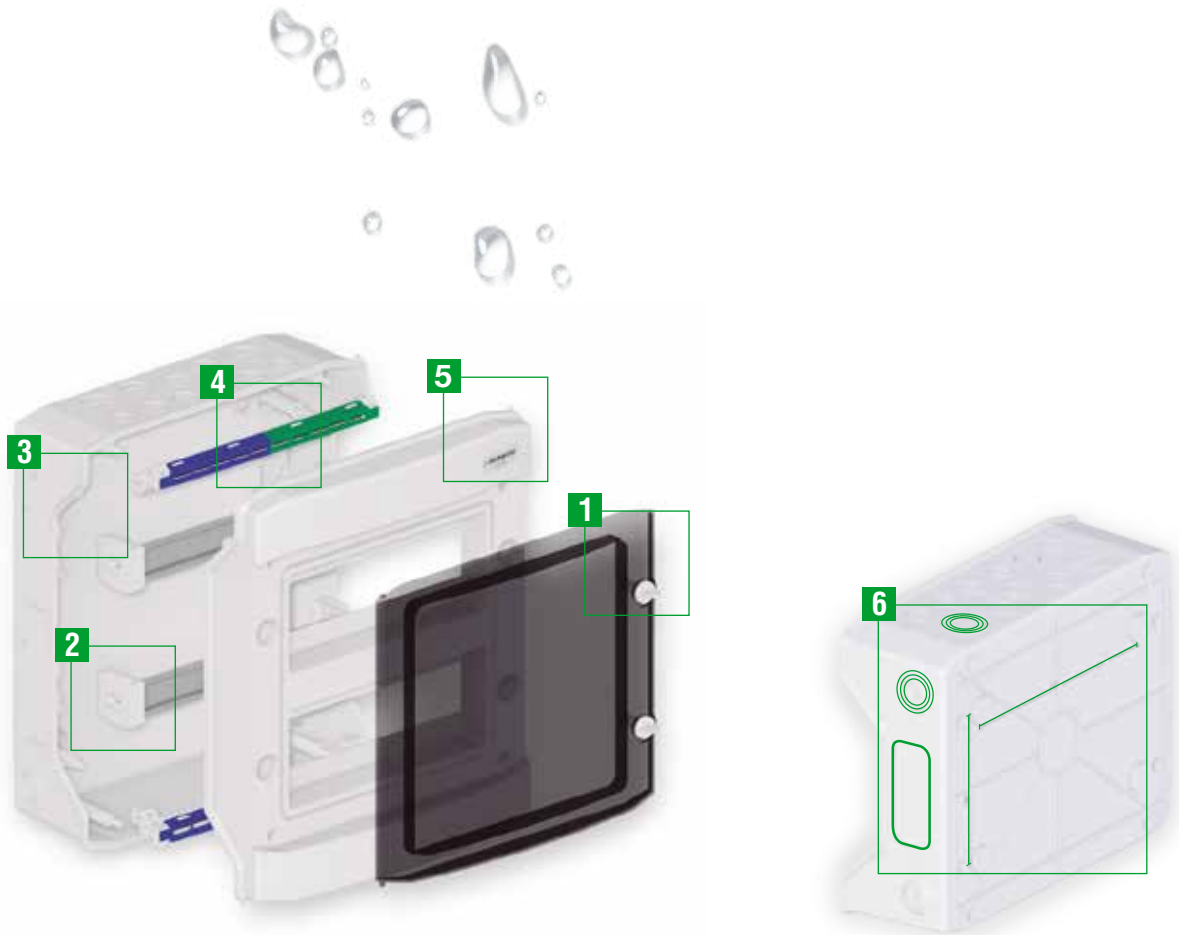




RoHS REACH HALOGENFREE



- ✓ The **Mondego**<sup>®</sup> line consists of a variety of **watertight Class II Insulation enclosures** with **4, 6, 8, 12, 18, 24, 36 and 48 DIN modules capacity** and **IP65** protection degree.
- ✓ Made of **ASA**, the **Mondego**<sup>®</sup> products ensure a high **resistance to the UV**.



*Watch the video*

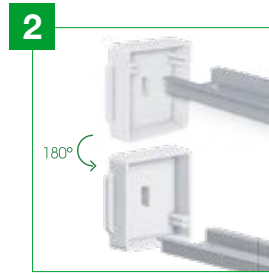




### 1 Door on the right or left position

Fast changing of door position - right or left side - with **180° opening** (except on the +60104, +60106 and +60108).

Rotating plastic handle lock that can be replaced by the metallic cam lock (code +61310).



### 2 Adjustable DIN Rail

Depth-adjustable DIN rail holder (except on the +60104, +60106 and +60108).



### 3 Accessibility

Cropped sides to improve accessibility and handling.



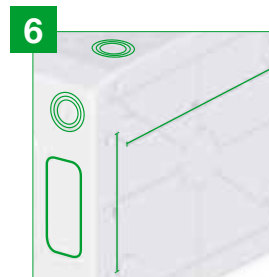
### 4 Insulated busbars

Insulated neutral and earth busbars made of ABS + Polycarbonate + Fiberglass.



### 5 Security

Allows sealing protection.



### 6 Easy installation

Pre-tears on the sides and tops with metric identification for cabling. Identification of the **distance between holes** on the back to fix the box on the wall.



### Installation kit

Blanking plate for empty modules; protective covers for fixing screws (Class II); box mounting kit (wall plugs and screws); user instructions; circuit identification labels.



- ✓ 4, 6, 8, 12, 18, 24, 36 and 48 modules capacity
- ✓ Class II Insulation
- ✓ Surface Mounted (SM) application
- ✓ Polycarbonate transparent door
- ✓ RAL 7035
- ✓ IP65 / IK07



CÓDIGO	DESIGNATION	DIMENSIONS W x H x D
+60104	DISTRIBUTION ENCL (1x4) 4md IP65 SM	127x200x120
+60106	DISTRIBUTION ENCL (1x6) 6md IP65 SM	165x200x120
+60108	DISTRIBUTION ENCL (1x8) 8md IP65 SM	200x200x120
+60112	DISTRIBUTION ENCL (1x12) 12md IP65 SM	318x258x144
+60118	DISTRIBUTION ENCL (1x18) 18md IP65 SM	428x258x144
+60212	DISTRIBUTION ENCL (2x12) 24md IP65 SM	318x383x144
+60312	DISTRIBUTION ENCL (3x12) 36md IP65 SM	318x535x144
+60412	DISTRIBUTION ENCL (4x12) 48md IP65 SM	318x664x144

**+60104** +60 - Main code of the Mondego® line  
 1 - Number of tears (rails)  
 Code reading 04 - Number of modules per tear